



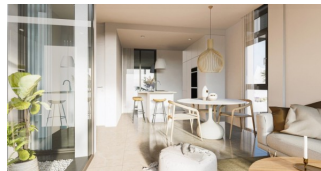
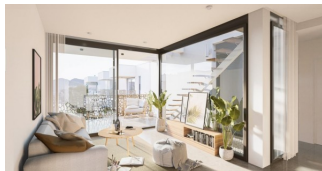
REF: # 9937

COSTA MURCIA



#### INFO

PRICE:	280.000 €
PROPERTY TYPE:	Apartment
CITY:	Costa Murcia
BEDROOMS:	3
Bathrooms:	2
Build ( m2 ):	100
Plot ( m2 ):	-
Terrace ( m2 ):	-
Year:	-
Floor:	-
Old price	-



#### DESCRIPTION

**NEW BUILD BUNGALOW APARTMENTS IN MAR DE CRISTAL** This secure gated exclusive residential development of 16 bungalow apartments in Mar de Cristal. Bungalows comes with 2 and 3 bedrooms, 2 bathrooms, open plan kitchen with island, living and dining area. Each master bedroom has an en suite bathroom and walk-in wardrobe and there is a guest bedroom with a built-in wardrobe and a guest shower room. Ground floor bungalows comes with large terraces and a small private solarium and top floor bungalows apartment with a front terrace and huge rooftop solarium. Each bungalow comes with underground parking space and storeroom. Beautiful residential with communal garden and 2 pools. Mar De Cristal is a coastal town in the middle of beautiful nature and nature parks of which you find photo's added. This is one of the most beautiful places in Spain and the whole world. In Mar De Cristal you will find some nice restaurants and a supermarket. The nice restaurants of Los Belones are only 2 km's away, The 36 km beaches of La Manga are a 5 minutes drive. Magical Cabo De Palos and Portman is only a 5 minutes drive. The big shopping centre of Cartagena is less than a 10 minutes drive. Murcia Corvera airport is 30 minutes away, Alicante airport 1 hour.

#### ENERGETIC CERTIFIED



**VIEWS**

- Panoramic views

**GARDEN AND  
TERRACES**

- Open terrace

**EXTRA**

- Reinforced door
- Storage room

## PROPERTY GALLERY















3 BEDROOMS / 3 DORMITORIOS  
**VIVIENDA BAJO E**  
 Esc. 1/100  
 LIVING AREA / SUPERFICIE ÚTIL PROYECTO 100.40 m<sup>2</sup>  
 SOLARIUM / SUPERFICIE ÚTIL SOLARIUM 21.57 m<sup>2</sup>  
 BUILT AREA / SUPERFICIE CONSTRUIDA PROYECTO 124.68 m<sup>2</sup>  
 Available parking place and storage room / Disponible plaza de garaje y trastero



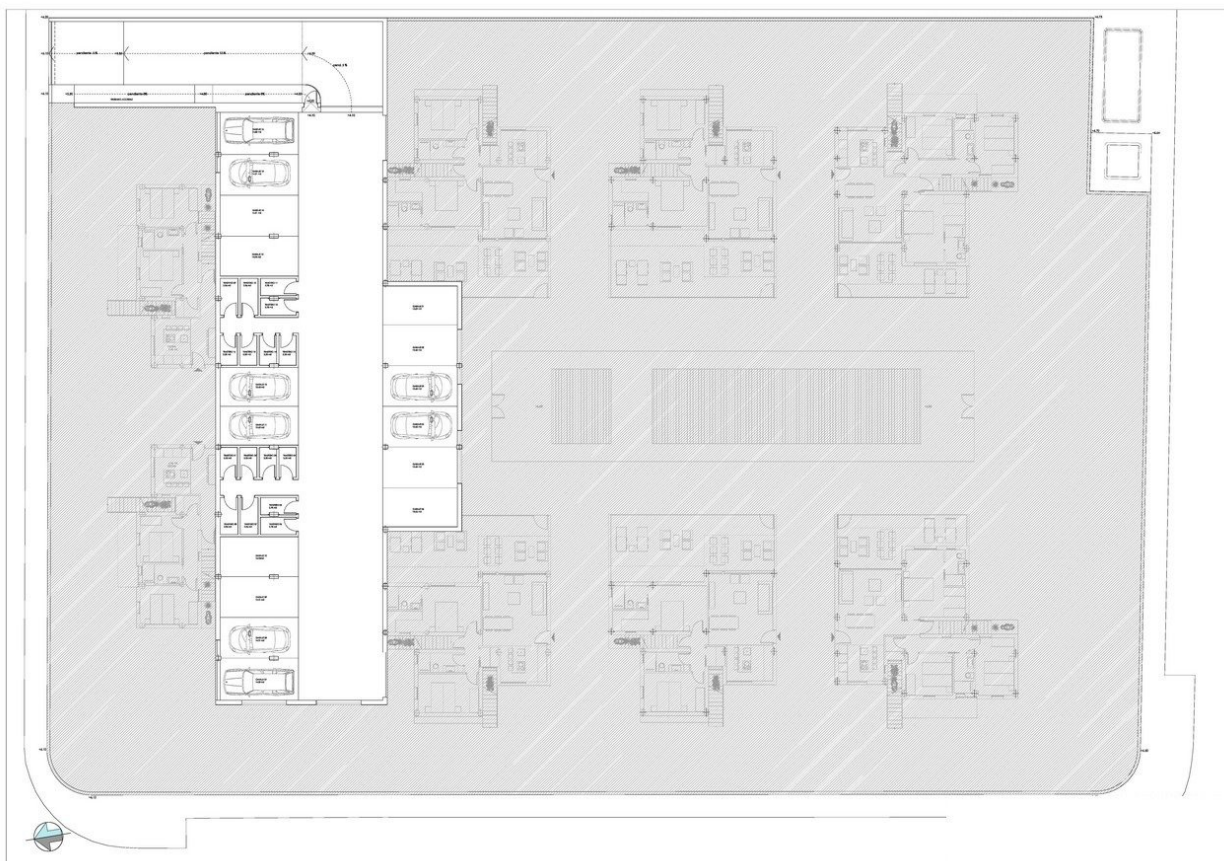




LIVING AREA / SUPERFICIE ÚTIL PROYECTO  
SOLARIUM / SUPERFICIE ÚTIL SOLARIUM  
BUILT AREA / SUPERFICIE CONSTRUIDA PROYECTO  
Available parking place and storage room / Disponible plaza de garaje y trastero

3 BEDROOMS / 3 DORMITORIOS  
VIVIENDA BAJO F

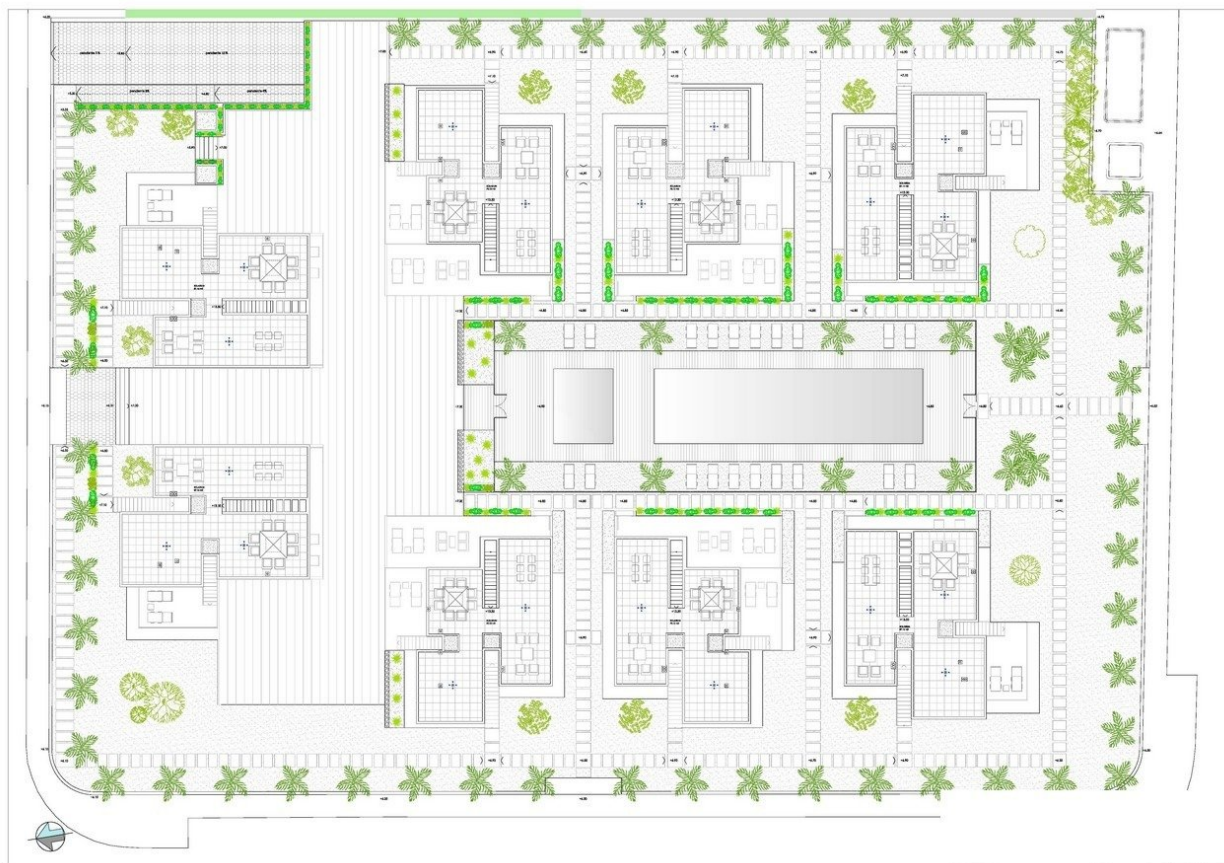
100.40 m²  
21.57 m²  
126.68 m²

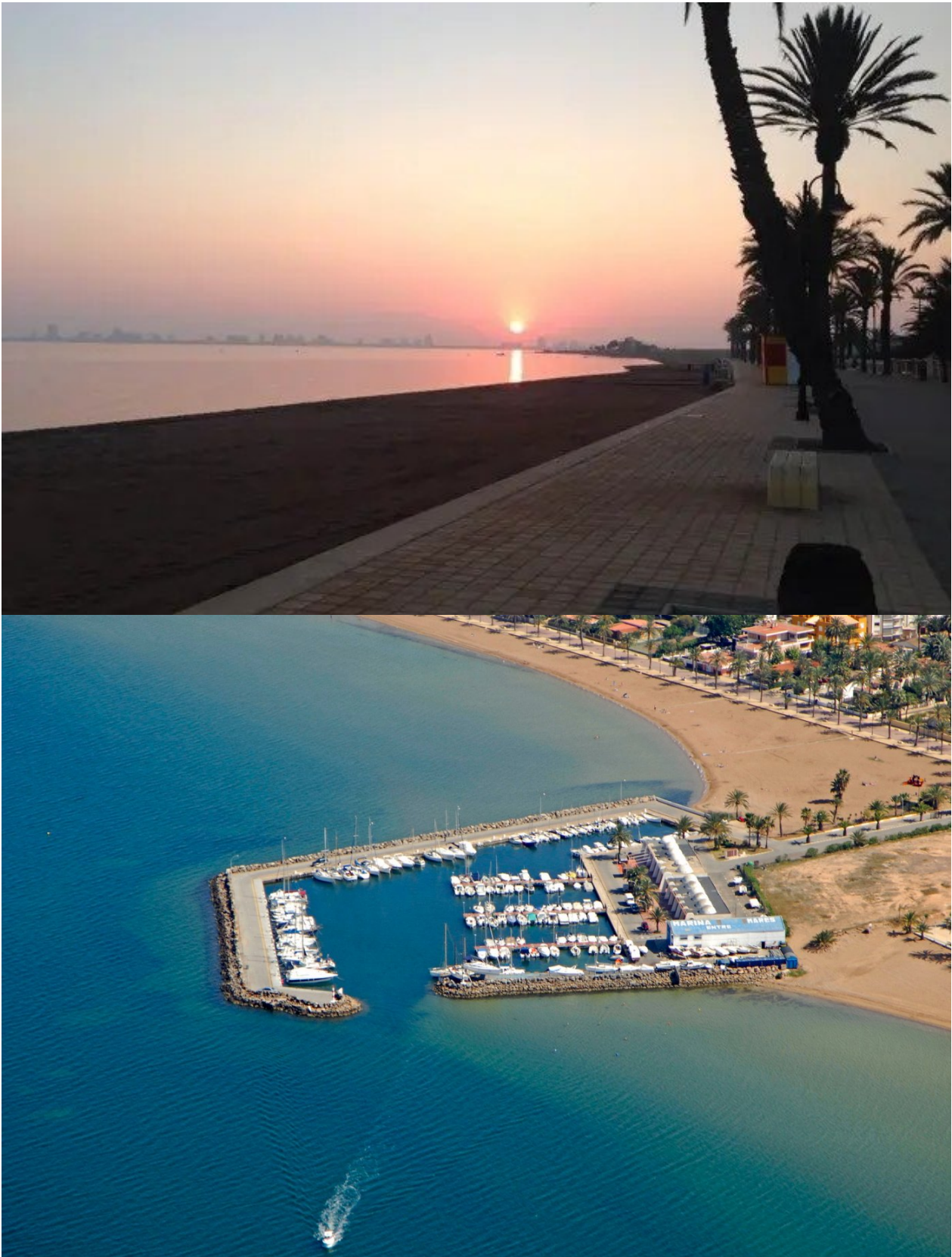












***"OUR EXPERIENCE IS YOUR GUARANTEE"***