



REF: # 9935

COSTA MURCIA



INFO

PRICE:	375.000 €
PROPERTY TYPE:	Villa
CITY:	Costa Murcia
BEDROOMS:	3
Bathrooms:	2
Build (m2):	126
Plot (m2):	314
Terrace (m2):	-
Year:	-
Floor:	-
Old price	-



DESCRIPTION

NEW BUILD VILLAS IN MAR DE CRISTAL New Build one level villa with 3 bedrooms and 2 bathrooms at 500 meters from the Mar De Cristal beaches. Villas has modern open plan kitchen with the living room, where high sliding windows has access to the garden with private swimming pool and parking space. The master bedroom has a dressing room and ensuite bathroom. The villa has also a storage and laundry room. From the big roof terrace you have beautiful sea views. Mar De Cristal is a coastal town in the middle of beautiful nature and nature parks of which you find photo's added. This is one of the most beautiful places in Spain and the whole world. In Mar De Cristal you will find some nice restaurants and a supermarket. The nice restaurants of Los Belones are only 2 km's away, The 36 km beaches of La Manga are a 5 minutes drive. Magical Cabo De Palos and Portman is only a 5 minutes drive. The big shopping centre of Cartagena is less than a 10 minutes drive. Murcia Corvera airport is 30 minutes away, Alicante airport 55 minutes.

ENERGETIC CERTIFIED



VIEWS

- Panoramic views

**GARDEN AND
TERRACES**

- Open terrace
- Private garden

EXTRA

- Reinforced door

PROPERTY GALLERY







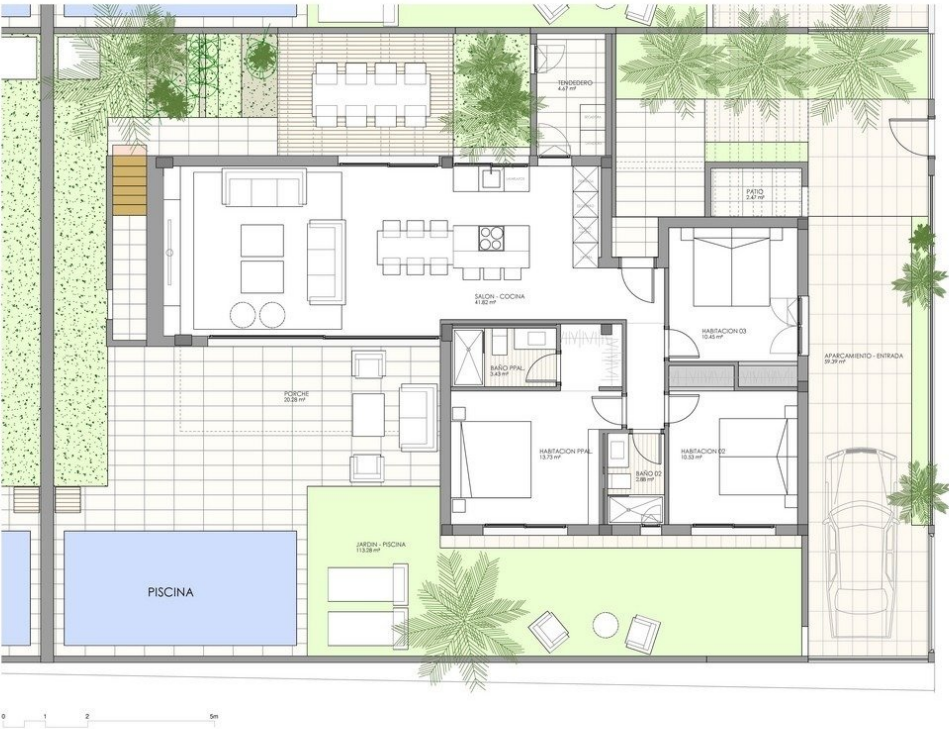








VIVIENDA 05

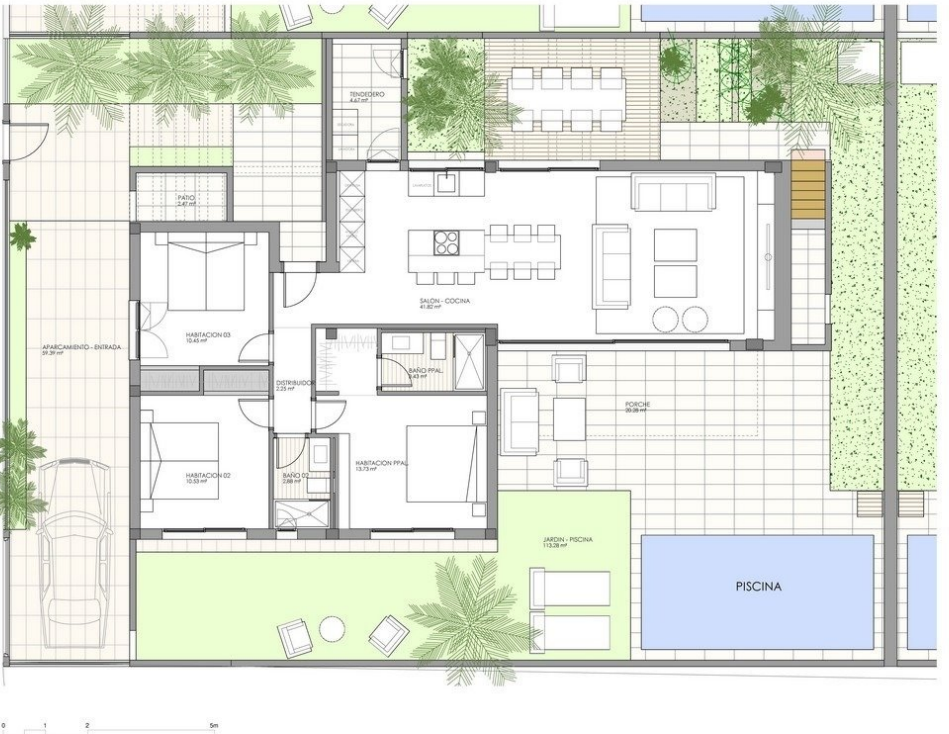


SUPERFICIES UTILES VILLA TIPO	
SALON - COCINA	41.8 m²
HAB. PRINCIPAL	13.7 m²
HABITACION 02	10.5 m²
HABITACION 03	10.4 m²
DISTRIBUIDOR	2.2 m²
BAÑO PRINCIPAL	3.4 m²
BAÑO 02	2.8 m²
TENEDERO	4.6 m²
PATIO	2.4 m²
	91.8 m²

SUPERFICIE CONSTRUIDA VILLA TIPO	
AREA	126.53 m²
*Incluye el porche cubierto y la escalera.	

SUPERFICIES EXTERIORES VILLA TIPO	
PORCHE	20.2 m²
JARDIN - PISCINA	111.9 m²
APARCAMIENTO - ENTRADA	59.39 m²
SOLARIUM	65.1 m²

VIVIENDA 04



SUPERFICIES UTILES VILLA TIPO	
SALON - COCINA	41.8 m²
HAB. PRINCIPAL	13.7 m²
HABITACION 02	10.5 m²
HABITACION 03	10.4 m²
DISTRIBUIDOR	2.2 m²
BAÑO PRINCIPAL	3.4 m²
BAÑO 02	2.8 m²
TENEDERO	4.6 m²
PATIO	2.4 m²
	91.8 m²

SUPERFICIE CONSTRUIDA VILLA TIPO	
AREA	126.53 m²
*Incluye el porche cubierto y la escalera.	

SUPERFICIES EXTERIORES VILLA TIPO	
PORCHE	20.2 m²
JARDIN - PISCINA	111.9 m²
APARCAMIENTO - ENTRADA	59.39 m²
SOLARIUM	65.1 m²



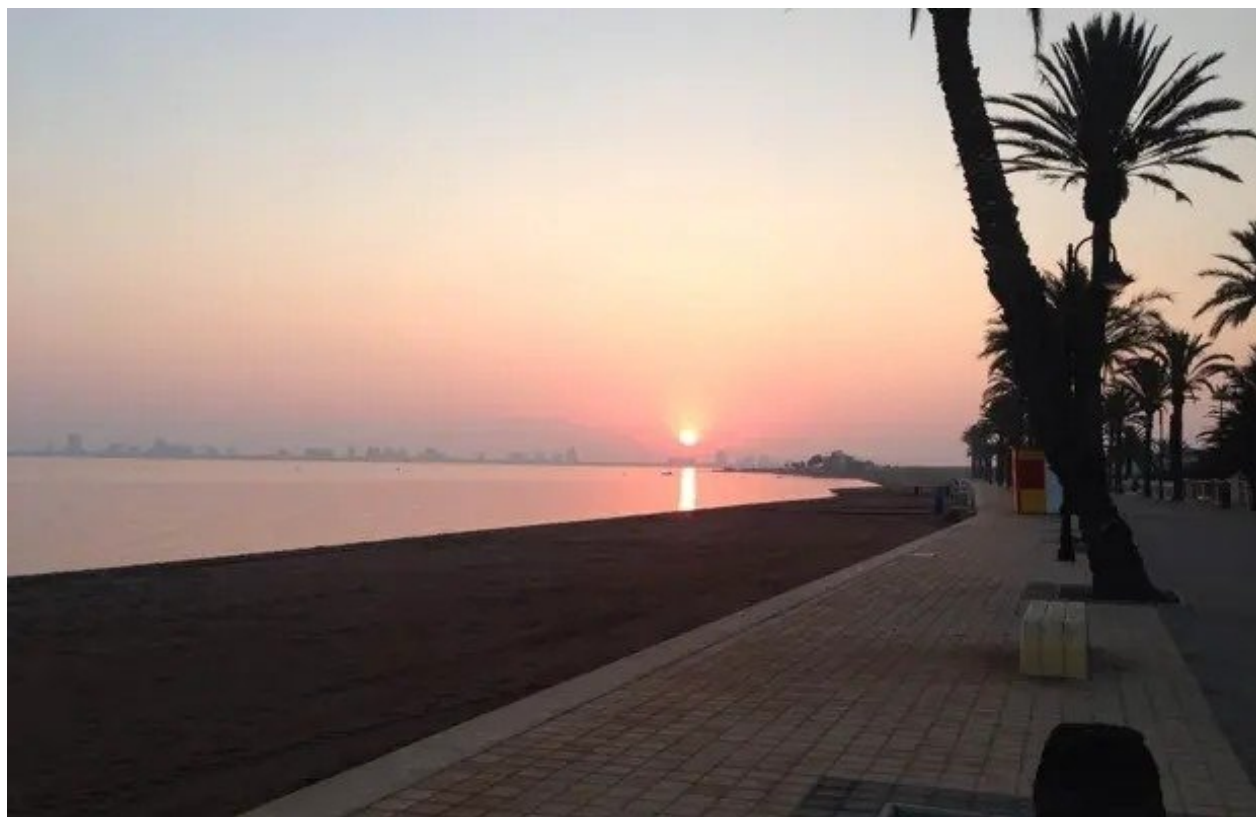
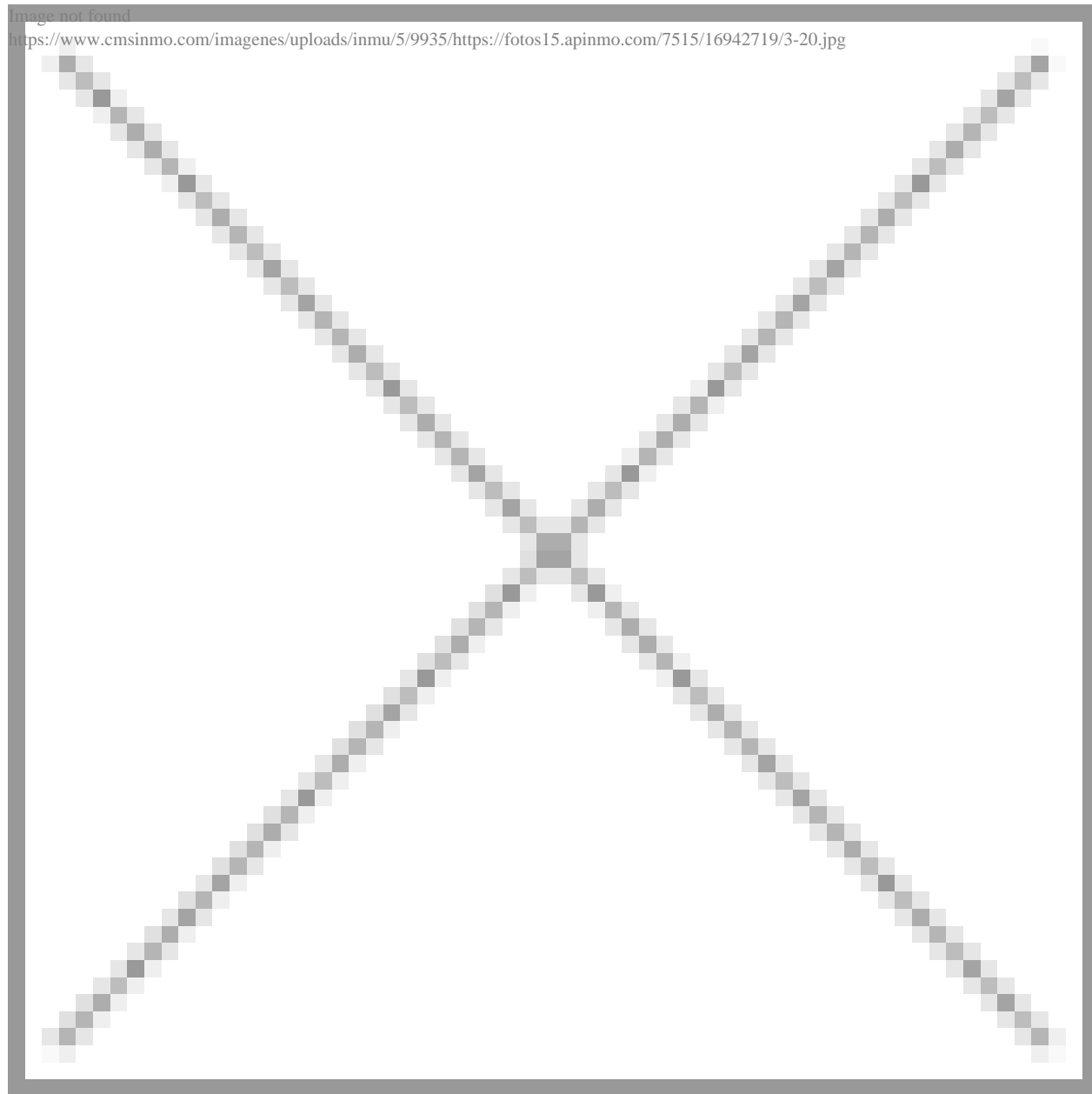


Image not found

<https://www.cmsinmo.com/imagenes/uploads/inmu/5/9935/https://fotos15.apinmo.com/7515/16942719/3-20.jpg>



"OUR EXPERIENCE IS YOUR GUARANTEE"