



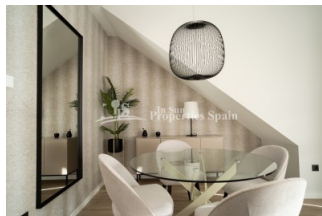
REF: # 9927

ORIHUELA COSTA (PUNTA PRIMA)



INFO

PRICE:	315.000 €
PROPERTY TYPE:	Apartment
CITY:	Orihuela Costa (Punta Prima)
BEDROOMS:	2
Bathrooms:	2
Build (m2):	72
Plot (m2):	-
Terrace (m2):	63
Year:	-
Floor:	-
Old price	-



DESCRIPTION

WONDERFUL NEW BUILD RESIDENTIAL COMPLEX OF APARTMENTS TOP FLOOR IN PUNTA PRIMA ORIHUELA COSTA only a few meters from the centre. This new top floor 72m2 apartment consists of 2 bedrooms, 2 bathrooms, parking and a 63m2 private solarium. The complex will offer nice green areas with a playground for children, a gym and two communal pools. It is located just a few meters from the centre of Punta Prima where you will find all the amenities you may need; nice restaurants, cafes, supermarkets, pharmacies and more. Punta Prima is located just 5 km from Torrevieja and has a good health infrastructure and a plenty of services available throughout the year. Just 10 km away we can find the golf courses of Villamartín, Campoamor, Las Ramblas, Las Colinas and Lo Romero, as well as the commercial centres of La Zenia and Habaneras. Nearest Airports: Alicante Airport 45mins drive (70km) and Murcia (Corvera) 42 mins (58km).

ENERGETIC CERTIFIED



STYLE	VIEWS	AIRCONDITIONING	DISTANCE TO :
<ul style="list-style-type: none">• Modern	<ul style="list-style-type: none">• Panoramic views	<ul style="list-style-type: none">• Central airconditioning	Beach : 3 Km Airport: 60 Km
PARKING	MAIN LIVING AREA	KITCHEN	GARDEN AND TERRACES
Parking no Cars: 1	<ul style="list-style-type: none">• Bathroom en-suite• Gym	<ul style="list-style-type: none">• Open kitchen	<ul style="list-style-type: none">• Open terrace• Play Ground• Landscaped• Communal Garden
EXTRA			
<ul style="list-style-type: none">• Reinforced door			









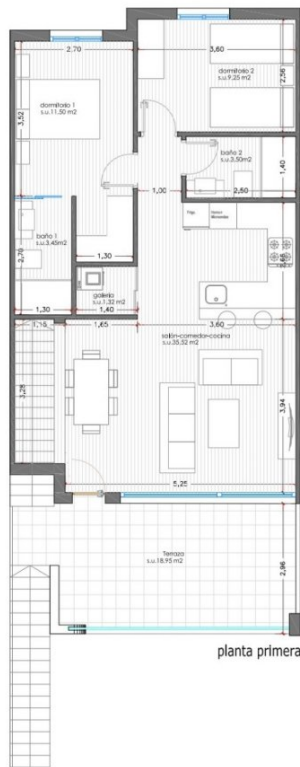




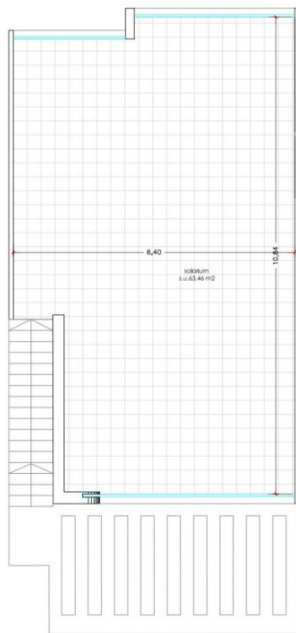




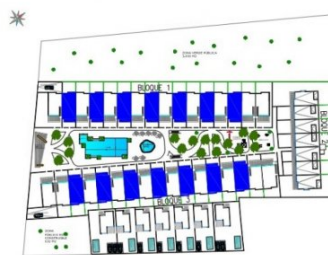




planta primera

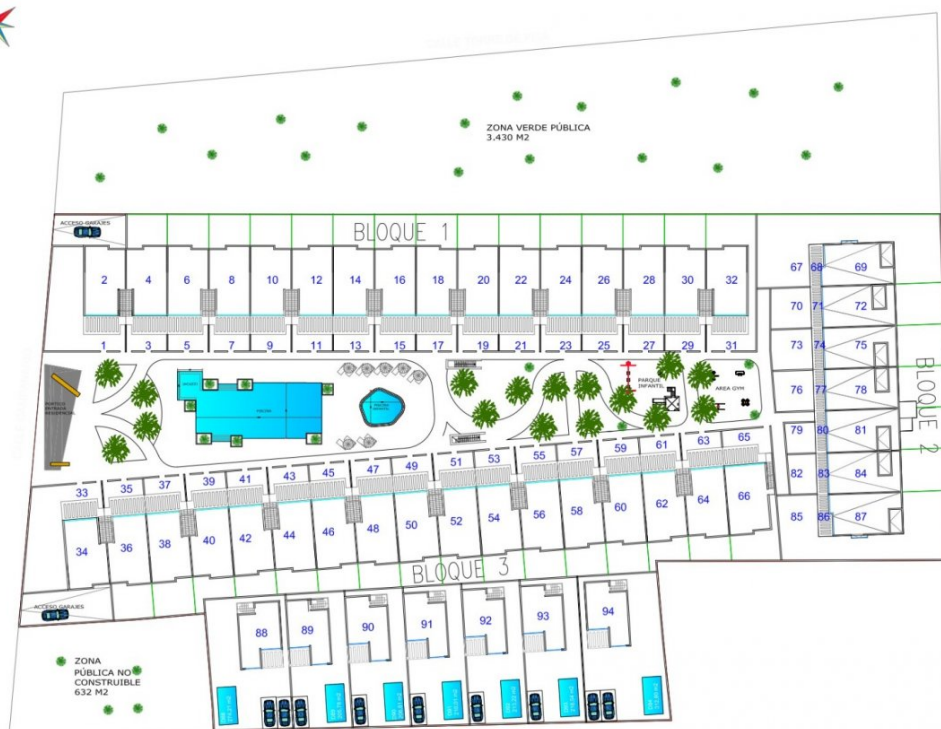


planta solarium



VIVIENDA 2 DORMITORIOS		Cuadra
		24
Planta Baja	m²	
Sala+Comedor Cocina	35.32	
Cocina	1.32	
Dormitorio 1	11.30	
Baño 1	3.40	
Baño 2	3.30	
Dormitorio 2	9.25	
Terraza	18.95	
SUPERFICIE SOLARIM		43.46m²
SUPERFICIE DE TOTAL		62.09m²
SUPERFICIE CONSTRUIDA TOTAL		72.33m²

MODELO 2 DORMITORIOS



PLANTA CONJUNTO



"OUR EXPERIENCE IS YOUR GUARANTEE"