



REF: # 9727

PILAR DE LA HORADADA (PILAR DE LA HORADADA)



INFO

PRICE:	205.900 €
PROPERTY TYPE:	Apartment
CITY:	Pilar De La Horadada (Pilar de la Horadada)
BEDROOMS:	2
Bathrooms:	2
Build (m2):	68
Plot (m2):	-
Terrace (m2):	80
Year:	-
Floor:	-
Old price	-



DESCRIPTION

NEW BUILD RESIDENTIAL OF APARTMENTS TOP FLOOR IN PILAR DE LA HORADADA This 68m2 top floor apartment consists of 2 bedrooms and 2 bathrooms with a 10m2 terrace and a 70m2 private solarium with communal pool and parking space. Pilar de la Horadada is a typical Spanish village in the most southern part of the Costa Blanca. The large main street has supermarkets, lots of shops, restaurants and bars and some lovely squares. The beautiful beaches of Torre de la Horadada and Mil Palmeras with fine sand promenade is just 5 minutes away. In addition to the original established Golf courses on the Orihuela Costa Villamartin, Las Ramblas, Real Campoamor and Las Colinas approximately 14km away, Pilar de la Horadada is also well served with the excellent course Lo Romero, only a 4.2km drive away. Only 8.2km away between San Javier and San Pedro del Pinatar, is Dos Mares shopping centre, and the major shopping centres of Murcia and Cartagena are also both under an hour's drive away. Further towards the

Orihuela Costa, only a 15 minute journey you will find “La Zenia Boulevard” the largest shopping centre in the Alicante region. The Airports of Corvera (Murcia) and Alicante are respectively 40 and 55 minutes away.



STYLE	VIEWS	DISTANCE TO :	PARKING
<ul style="list-style-type: none">Modern	<ul style="list-style-type: none">Panoramic views	Beach : 5 Km Airport: 50 Km Town center : 5 Km	Parking no Cars: 1
GARDEN AND TERRACES	EXTRA		
<ul style="list-style-type: none">Open terrace	<ul style="list-style-type: none">Reinforced door		









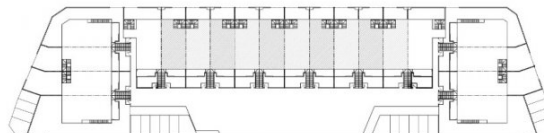
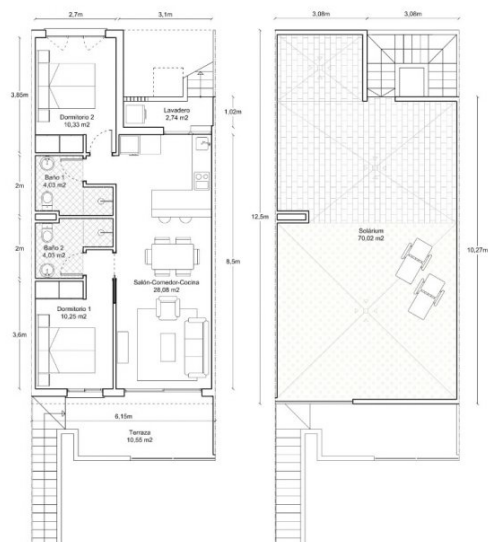








TIPOLOGÍA 2 - Viviendas n° 26, 28, 30, 32, 34
Planta Primera y Solárium



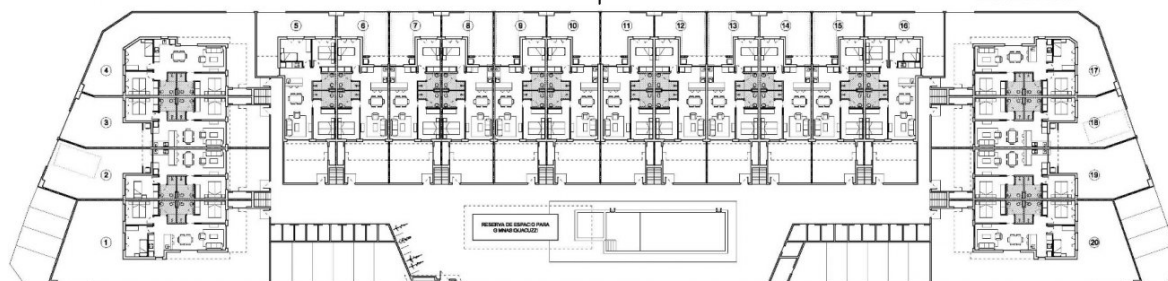
CUADRO DE SUPERFICIES		
USO	SUPERFICIE ÚTIL	SUPERFICIE CONSTRUIDA
Tipología 2 (Planta primera y solárium)	Salón-Comedor-Cocina	28.08
	Dormitorio 1	10.33
	Dormitorio 2	10.33
	Baño 1	4.03
	Baño 2	4.03
	Lavadero (100%)	2.74
		3.14
	Terraza	10.55 (no comp.)
	Solárium	70.02 (no comp.)
TOTAL computable	99.46	68.48

NUMERACIÓN VIVIENDAS
Planta Baja

PHASE II

PHASE I

Ground Floor

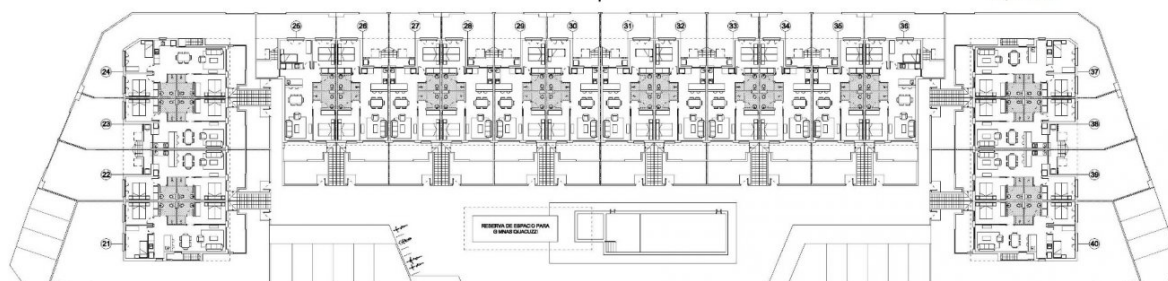


Planta Primera

PHASE II

PHASE I

Top Floor







"OUR EXPERIENCE IS YOUR GUARANTEE"