



REF: # 9635

TORREVIEJA (TORREVIEJA CENTRO)



#### INFO

**PRICE:** 159.000 €

**PROPERTY TYPE:** Apartment

**CITY:** Torrevieja  
(Torrevieja centro)

**BEDROOMS:** 1

**Bathrooms:** 1

**Build ( m2 ):** 55

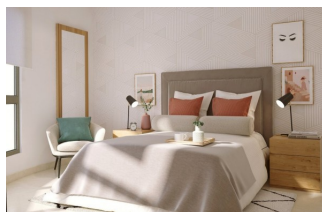
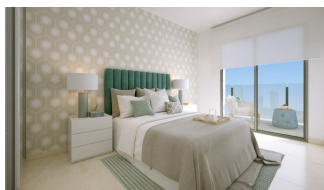
**Plot ( m2 ):** -

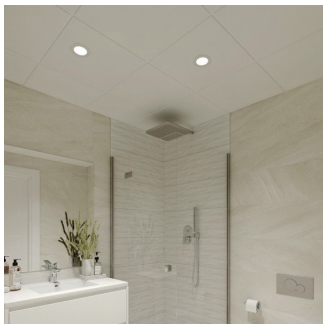
**Terrace ( m2 ):** 3

**Year:** -

**Floor:** -

**Old price** -





## DESCRIPTION

**NEW BUILD APARTMENTS IN TORREVIEJA** near Los Locos Beach. This 55m<sup>2</sup> apartment consists of 1 bedroom and 1 bathroom, integrated modern kitchen and large open-plan living/dining room, leading to a 3m<sup>2</sup> tiled terrace. The development benefits from a rooftop communal swimming pool and sunbathing area. Torrevieja is a Spanish town in the province of Alicante, on the Costa Blanca. It is known for its superb promenade, restaurants, weekly Friday market and the Habaneras shopping centre. Only 15 minutes drive is "La Zenia Boulevard" the largest shopping centre in the Alicante region, it's a one-stop destination for clothes, shoes and general supplies. No matter what you're after, chances are you won't walk out empty-handed. It is known for its typically Mediterranean climate and coastline. It has boardwalks with resorts along its sandy beaches only 150m away! In addition to the original established Golf courses on the Orihuela Costa, Villamartin, Las Ramblas, Real Campoamor and Las Colinas, Torrevieja area is well served with excellent courses such as La Finca, La Marquesa, Las Colinas, Lo Romero and Vistabella offering different golf experiences with a variety of sea and mountain views. Alicante airport located 40 minutes away and Murcia airport about 1 hour away.

## ENERGETIC CERTIFIED



STYLE

- Modern

EXTRA

- Reinforced door

DISTANCE TO :

Beach : 200 m

Airport: 50 Km

FURNITURE

- Not furnished

GARDEN AND  
TERRACES

- Open terrace

































CUADRO DE SUPERFICIES SUPERFICIE VIVIENDA TIPO (PLANTA 1-4)	
	VIV-B
SALON COMEDOR	18,00 m2
PASILLO	1,05 m2
BAÑO-1	3,90 m2
DORMITORIO-1	10,00 m2
DORMITORIO-2	0,00 m2
SUP. TERRAZA-1	3,10 m2
<b>SUP. ÚTIL VIVIENDA</b>	<b>36,05 m2</b>
<b>SUP. CONSTRUIDA COMUNES</b>	<b>12,35 m2</b>
<b>SUPERFICIE CONSTRUIDA</b>	
<b>TOTAL (terrazas al 100% y E.C.)</b>	<b>55,15 m2</b>

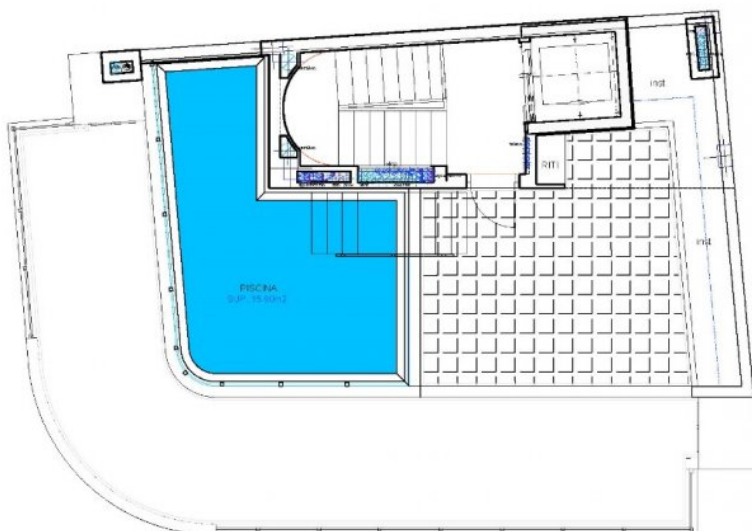


PLANTA 1-4

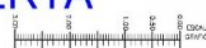


PLANTA 1-4





PLANTA CUBIERTA



PLANTA CUBIERTA/SOLARIUM







**"OUR EXPERIENCE IS YOUR GUARANTEE"**