



REF: # 9633

TORREVIEJA



#### INFO

**PRICE:** 750.000 €

**PROPERTY TYPE:** Villa

**CITY:** Torrevieja

**BEDROOMS:** 4

**Bathrooms:** 4

**Build ( m2 ):** 238

**Plot ( m2 ):** 420

**Terrace ( m2 ):** 102

**Year:** -

**Floor:** -

**Old price** -



#### DESCRIPTION

WONDERFUL NEW BUILD VILLA IN LA MATA, TORREVIEJA, only 15 minutes walk to the famous Playa de La Mata. This 238m2 villa is built on a plot of 420m2 and consists of 4 bedrooms (fitted wardrobes), 4 bathrooms, open plan kitchen with the lounge area, private garden, pool, off road parking space, private solarium and basement. Torrevieja is a Spanish town in the province of Alicante, on the Costa Blanca with 300 days of sunshine a year and an average temperature of 20°C. It is known for its superb promenade, restaurants, weekly Friday market and the Habaneras shopping centre. It has a wide range of cultural and leisure activities all year round. Only 15 minutes drive is "La Zenia Boulevard" the largest shopping centre in the Alicante region, it's a one-stop destination for clothes, shoes and general supplies. No matter what you're after, chances are you won't walk out empty-handed. In addition to the original established Golf courses on the Orihuela Costa Villamartin, Las Ramblas, Real Campoamor and Las Colinas, Torrevieja area is now

also well served with excellent courses such as La Finca, La Marquesa, Las Colinas, Lo Romero and Vistabella offering different golf experiences with a variety of sea and mountain views. Alicante Airport is 45 minutes / 45kms drive away and Murcia (Corvera) is 55 mins / 68kms.



#### VIEWS

- Panoramic views

#### AIRCONDITIONING

- Central airconditioning

#### DISTANCE TO :

Beach : 200 m

Airport: 50 Km

#### PARKING

Parking no Cars: 1

#### GARDEN AND TERRACES

- Open terrace
- Fruit trees
- Fenced
- Private garden

#### EXTRA

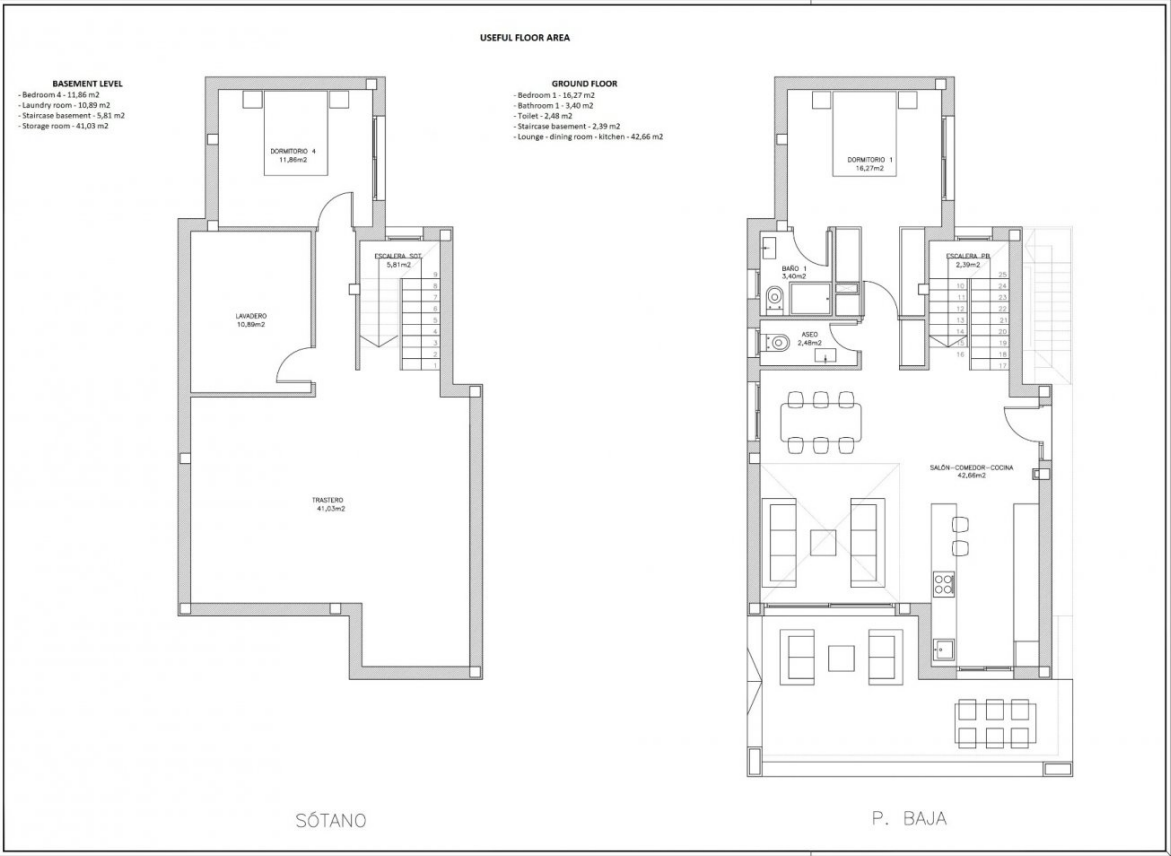
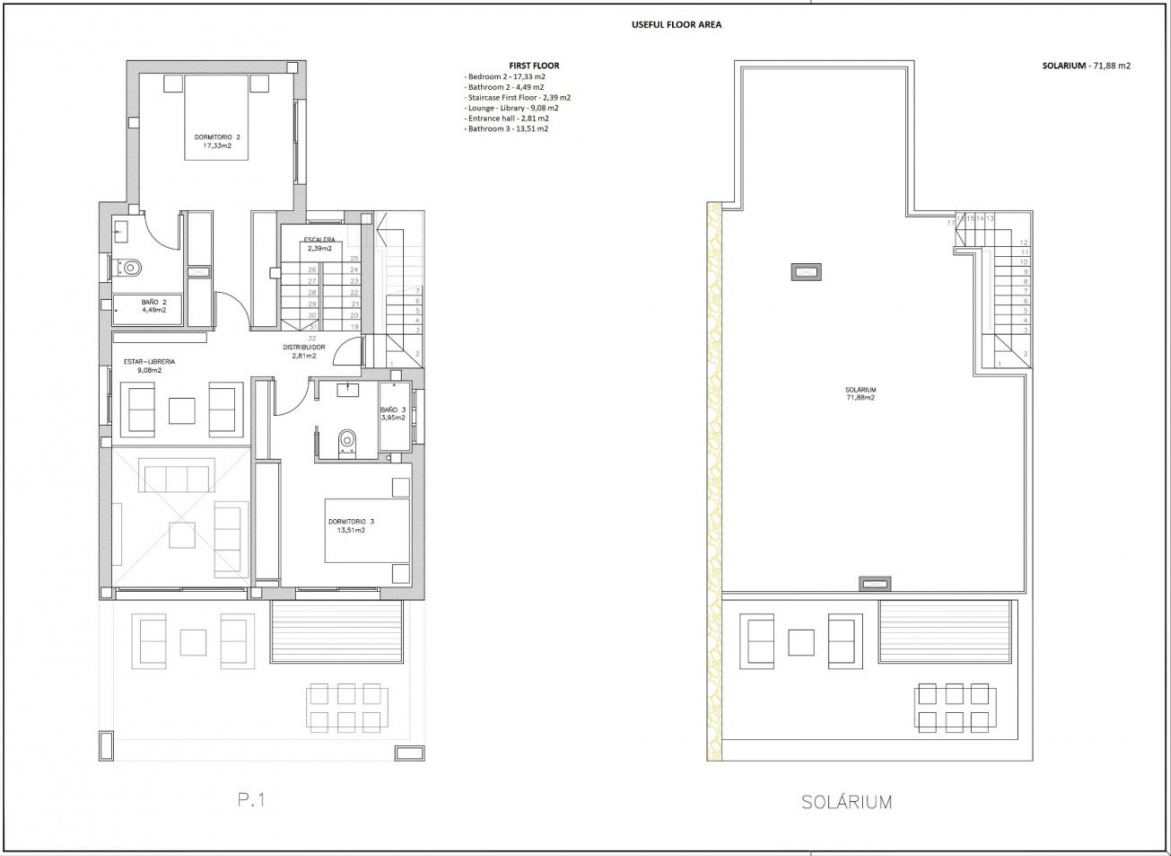
- Built in wardrobes
- Reinforced door
- Storage room

## PROPERTY GALLERY









#### Vivienda A

-Parcela 416,96m2

#### SUPERFICIES CONTRUIDAS:

- Planta Sótano 83,58m2
- Planta Baja 83,57m2
- Planta Primera 70,87m2

TOTAL: 238,02m2

SUPERFICIE SOLARIUM 71,88m2

#### HOUSE A

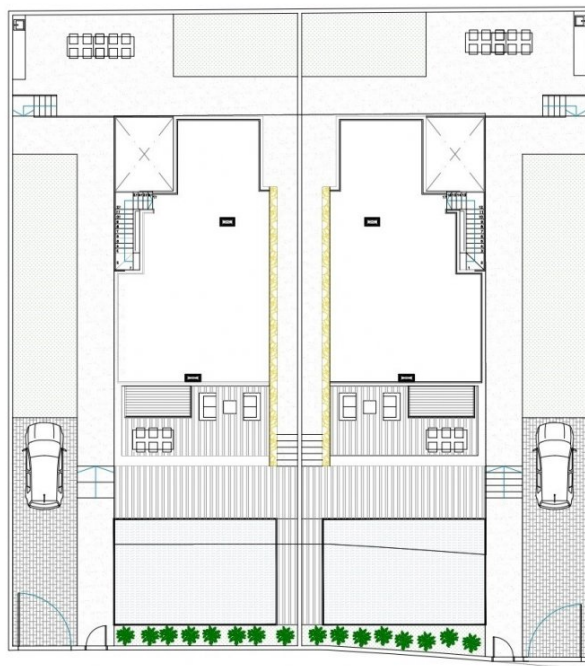
- PLOT OF LAND - 416, 96 m2

#### CONSTRUCTED AREA:

- Basement level - 83,58 m2
- Ground floor - 83,57 m2
- First floor - 70,87 m2

TOTAL - 238,02 m2

SOLARIUM AREA: 71,88 m2



#### Vivienda B

-Parcela 423,95m2

#### SUPERFICIES CONTRUIDAS:

- Planta Sótano 83,58m2
- Planta Baja 83,57m2
- Planta Primera 70,87m2

TOTAL: 238,02m2

SUPERFICIE SOLARIUM 71,88m2

#### HOUSE B

- PLOT OF LAND - 423, 95 m2

#### CONSTRUCTED AREA:

- Basement level - 83,58 m2
- Ground floor - 83,57 m2
- First floor - 70,87 m2

TOTAL - 238,02 m2

SOLARIUM AREA: 71,88 m2







**"OUR EXPERIENCE IS YOUR GUARANTEE"**