



REF: # 9585

ORIHUELA COSTA (VISTABELLA GOLF)



#### INFO

<b>PRICE:</b>	429.000 €
<b>PROPERTY TYPE:</b>	Villa
<b>CITY:</b>	Orihuela Costa (Vistabella Golf)
<b>BEDROOMS:</b>	4
<b>Bathrooms:</b>	3
<b>Build ( m2 ):</b>	144
<b>Plot ( m2 ):</b>	304
<b>Terrace ( m2 ):</b>	71
<b>Year:</b>	-
<b>Floor:</b>	-
<b>Old price</b>	-



#### DESCRIPTION

**LUXURY NEW BUILD VILLA IN VISTABELLA GOLF RESORT ORIHUELA COSTA.** This 144m2 villa consists of 4 bedrooms, 3 bathrooms, an open plan living room with the kitchen, a large 52m2 solarium, a 19m2 terrace, a 304m2 garden with parking and at an additional cost a private pool. This villa is built on two levels and is situated in Vistabella golf resort between the towns of San Miguel de Salinas and Los Montesinos only 5 minutes drive away and from the lovely sandy beaches of Guardamar and La Mata just 20 minutes drive away (20km). The 18 Holes of Vistabella Golf, par 72 and more than 6,000 meters in length have been designed following the guidelines of the modern fields with 4 tees of great amplitude in each hole, wide fairways and raised bunkers. Vistabella Golf resort has security entrance, 18 hole golf course, padel courts, bowling greens, supermarket and a great selection of bars and restaurants. Plans are now agreed for a new clubhouse, champagne bar, sushi bar, spa hotel, artificial beach, tennis court, football pitch, gourmet bar and much more transforming this resort

into a 5 star luxury complex. There are shopping centers nearby in Torrevieja, the Habaneras shopping centre and only 18 minute drive is “La Zenia Boulevard” the largest shopping centre in the Alicante region, it’s a one-stop destination for clothes, shoes and general supplies. No matter what you're after, chances are you won't walk out empty-handed. Alicante Airport is 35 minutes away (60km) and Murcia (Corvera) Airport is 45 minutes away.



## STYLE

- Modern

## VIEWS

- Panoramic views

## DISTANCE TO :

Beach : +10 Km

Airport: 60 Km

## PARKING

Parking no Cars: 1

## KITCHEN

- Open kitchen

## GARDEN AND TERRACES

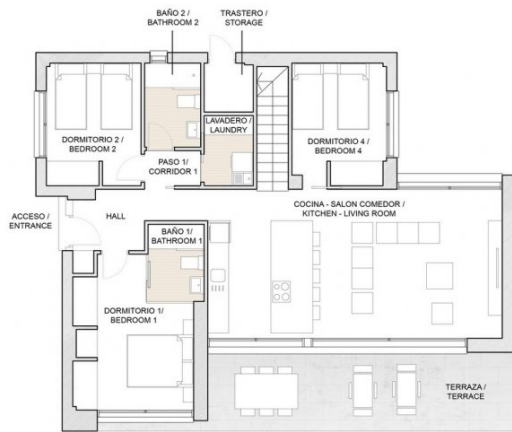
- Open terrace
- Private garden

## EXTRA

- Reinforced door







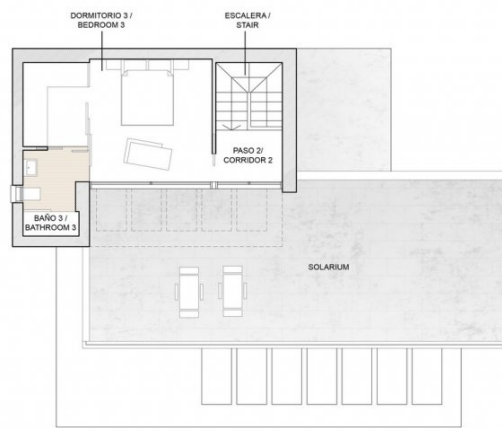
PLANTA BAJA /  
GROUND FLOOR

Planta Baja / Ground Floor  
Superficies útiles / Useful surface

Superficie construida / Built area

PROPIEDAD / PROPERTY	144,43 m²
TERRAZAS / TERRACES	19,80 m²
SOLARIUM	52,20 m²
<b>TOTAL CONSTRUIDA / BUILT AREA</b>	<b>216,43 m²</b>

ACCESO / ENTRANCE	1,39 m²
HALL	5,40 m²
DORMITORIO 1 / BEDROOM 1	13,03 m²
BAÑO 1 / BATHROOM 1	3,52 m²
COCINA-SALÓN COMEDOR / KITCHEN - LIVING ROOM	35,70 m²
DORMITORIO 2 / BEDROOM 2	9,37 m²
DORMITORIO 4 / BEDROOM 4	9,20 m²
BAÑO 2 / BATHROOM 2	3,84 m²
PASO 1 / CORRIDOR 1	1,60 m²
LAVADERO / LAUNDRY	2,80 m²
TRASTERO / STORAGE	1,95 m²
TERRAZA / TERRACE	19,80 m²



PLANTA ALTA /  
TOP FLOOR

Planta Alta / Top Floor  
Superficies útiles / Useful surface

ESCALERA / STAIR	5,10 m²
PASO 2 / CORRIDOR 2	2,79 m²
DORMITORIO 3 / BEDROOM 3	16,80 m²
BAÑO 3 / BATHROOM 3	4,10 m²
SOLARIUM	52,20 m²











***"OUR EXPERIENCE IS YOUR GUARANTEE"***