



REF: # 9517

TORREVIEJA (LA MATA)



INFO

PRICE:	940.000 €
PROPERTY TYPE:	Villa
CITY:	Torrevieja (La mata)
BEDROOMS:	4
Bathrooms:	4
Build (m2):	310
Plot (m2):	320
Terrace (m2):	122
Year:	-
Floor:	-
Old price	-



DESCRIPTION

BEAUTIFUL MEDITERRANEAN VILLA, DETACHED, IN TORREVIEJA only 60m to the beach with sea views. This 310m2 villa is built on a plot of 320 m² and consists of 4 double bedrooms (2 en suite), 4 bathrooms, 2 living rooms and kitchen, private parking, terraces of 50m², solarium of 50m² with sea views and a private swimming pool. Located only 1 minute from the beach with direct sea views, in the best part of the town of Torrevieja - La Mata is an area with a very well developed infrastructure. It is a small fishing village with all the necessary services for day to day life, with 9 km of fine sandy beaches and a climate that offers you 300 days of sunshine a year with an average temperature of 20°C. Near to the town of Torrevieja which is known for its superb promenade, restaurants, weekly Friday market and the Habaneras shopping centre. It has a wide range of cultural and leisure activities all year round. Only 20 minutes drive is "La Zenia Boulevard" the largest shopping centre in the Alicante region, it's a one-stop destination for clothes, shoes and general supplies. No matter what you're after, chances are you won't walk out empty-handed. In addition to the original

established Golf courses on the Orihuela Costa Villamartin, Las Ramblas, Real Campoamor and Las Colinas, Torrevieja area is now also well served with excellent courses such as La Finca, La Marquesa, Las Colinas, Lo Romero and Vistabella offering different golf experiences with a variety of sea and mountain views. La Mata is connected by bus with Torrevieja and Alicante. There are 2 hospitals nearby. Golf courses 6 km. Alicante airport 42 km.



STYLE

- Contemporary

VIEWS

- Panoramic views
- Sea views

DISTANCE TO :

Beach : 6 Km

Airport: 40 Km

GARDEN AND
TERRACES

- Open terrace
- Private garden











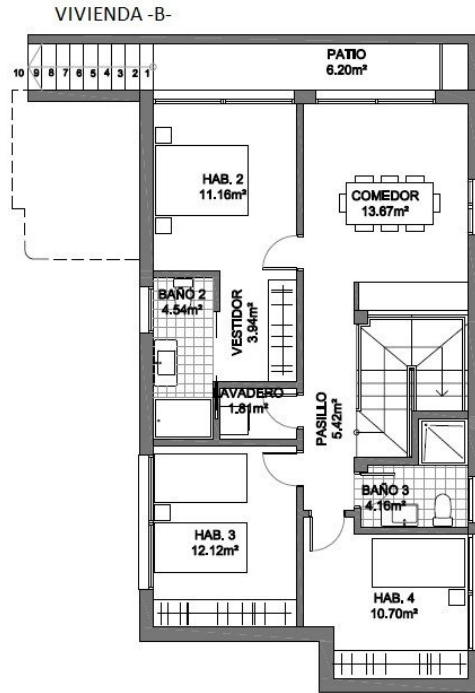
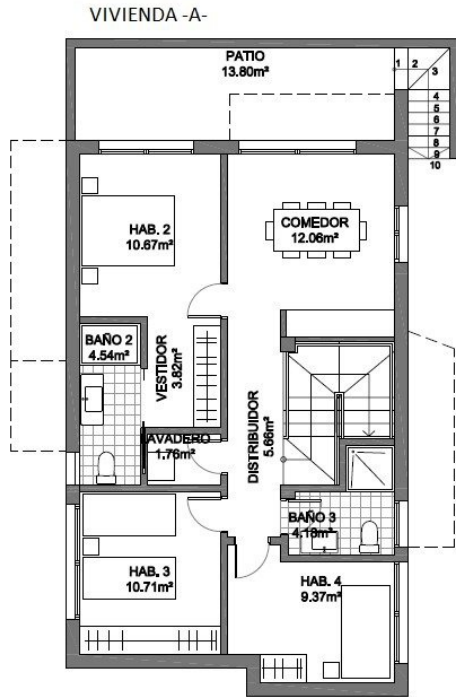






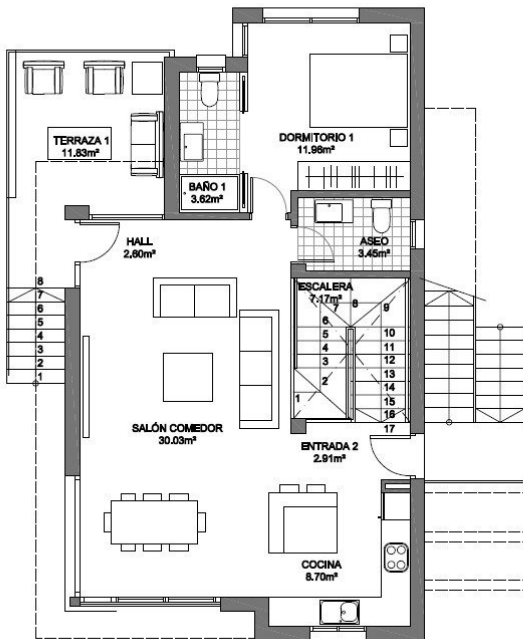


PLANTA BAJA

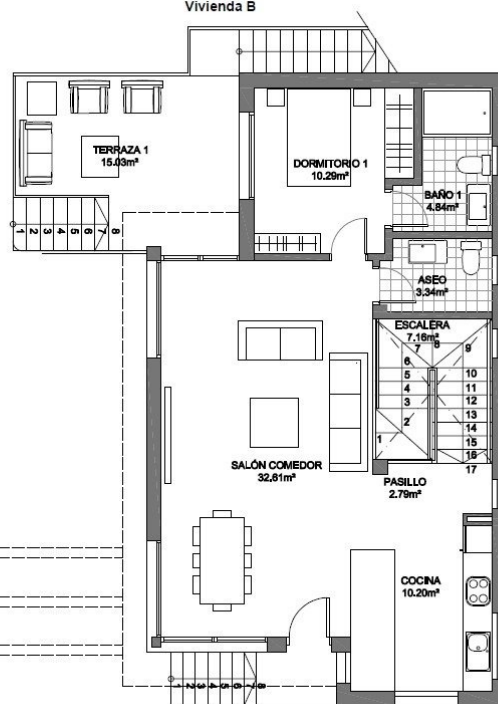


PLANTA PRIMERA

Vivienda A



Vivienda B



"OUR EXPERIENCE IS YOUR GUARANTEE"