



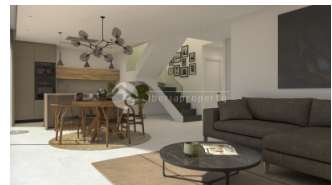
REF: # 9430

FINESTRAT (FINESTRAT HILLS)



INFO

PRICE:	460.000 €
PROPERTY TYPE:	Villa
CITY:	Finestrat (Finestrat Hills)
BEDROOMS:	3
Bathrooms:	3
Build (m2):	140
Plot (m2):	325
Terrace (m2):	-
Year:	-
Floor:	-
Old price	-



DESCRIPTION

Take the opportunity now before price adjustment. A completely new residential area has now been laid out with a total of 19 detached houses. Only 6 villas have been laid out in the first phase. Short way to the golf course in Finestrat. The villas consist of a living room with an open kitchen. 3 bedrooms and 3 bathrooms. Private swimming pool of 19m2. Ready to move in spring / summer 2023. On the ground floor there is an open living room / kitchen with access to a large terrace and to a private swimming pool. There is also one bedroom on the ground floor and with direct access to the private bathroom. On the second floor there are 2 bedrooms and 2 bathrooms. Roof terrace is optional. Complete kitchen and bathroom fittings Motorize blinds, LED lights throughout the home. Underfloor heating in bathroom. Pre installed air conditioning. Electric entrance to private parking on the plot. 6.5x 3 m swimming pool Finished garden with palm trees fruit trees and artificial grass. Automatic irrigation system. Garage in the basement is an option.

ENERGETIC CERTIFIED



STYLE	VIEWS	AIRCONDITIONING	DISTANCE TO :
<ul style="list-style-type: none">• Modern	<ul style="list-style-type: none">• Sea views• Mountain views	<ul style="list-style-type: none">• Central airconditioning	Beach : 4 Km
			Airport: 50 Km
			Town center : 3 Km
ORIENTATION	FURNITURE	PARKING	MAIN LIVING AREA
South	<ul style="list-style-type: none">• Not furnished	Garage no Cars : 1	<ul style="list-style-type: none">• Bathroom en-suite
		Parking no Cars: 1	
FLOORING	KITCHEN	GARDEN AND TERRACES	HEATING
<ul style="list-style-type: none">• Tile floors	<ul style="list-style-type: none">• Open kitchen• Equipped kitchen	<ul style="list-style-type: none">• Covered terrace• Open terrace• Exterior lights• Automatic watering system• Fruit trees• Palm trees• Landscaped• Fenced• Stone walls• Electric gate• Private garden	<ul style="list-style-type: none">• Floor heating bathrooms
EXTRA			
<ul style="list-style-type: none">• Built in wardrobes• Alarm• Reinforced door• Double glazed windows• Storage room• Internet			







VIVIENDA PARCELAS 02 - 04 - 06 - 08

SUPERFICIE CONSTRUIDA 191.70 m²



FINESTRAT (ALICANTE)



SÓTANO



PLANTA BAJA



PLANTA PISO



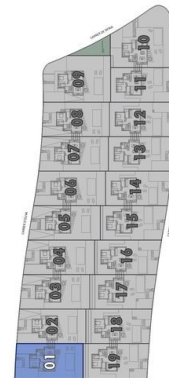
DIN A3 (1/75)

PARCELA 01

331.80 m²



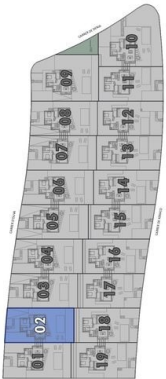
FINESTRAT (ALICANTE)



DIN A3 (1/100)

PARCELA 02
322.10 m²

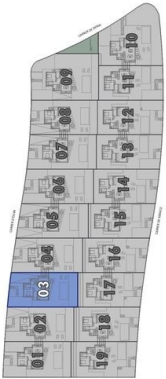
FINESTRAT (ALICANTE)



DIN A3 (1/100)

PARCELA 03
324.90 m²

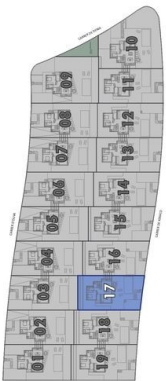
FINESTRAT (ALICANTE)



DIN A3 (1/100)

PARCELA 17
327.90 m²

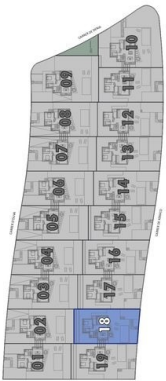
FINISTRAT (ALICANTE)



DIN A3 (1/100)

PARCELA 18
328.90 m²

FINISTRAT (ALICANTE)



DIN A3 (1/100)

VIVIENDA PARCELA 01

SUPERFICIE CONSTRUIDA 116.90 m²



FINESTRAT (ALICANTE)



PLANTA BAJA



DIN A3 (1/75)

PLANTA PISO



SOLARIUM

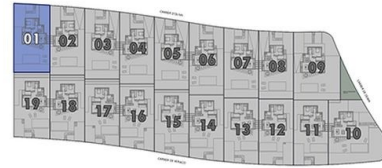


VIVIENDA PARCELA 01

SUPERFICIE CONSTRUIDA 116.90 m²



FINESTRAT (ALICANTE)



PLANTA BAJA



DIN A3 (1/75)

PLANTA PISO



SOLARIUM (OPCIONAL)



VIVIENDA PARCELA 01

SUPERFICIE CONSTRUIDA 116.90 m²



FINESTRAT (ALICANTE)



PLANTA BAJA



PLANTA PISO



SOLARIUM



DIN A3 (1/75)

VIVIENDA PARCELAS 02 - 04 - 06 - 08

SUPERFICIE CONSTRUIDA 116.90 m²



FINESTRAT (ALICANTE)



PLANTA BAJA



PLANTA PISO



DIN A3 (1/75)

VIVIENDA PARCELAS 03 - 05 - 07

SUPERFICIE CONSTRUIDA 116.90 m²



FINESTRAT (ALICANTE)



PLANTA BAJA



PLANTA PISO



DIN A3 (1/75)

VIVIENDA PARCELAS 11 - 13 - 15 - 17 - 19

SUPERFICIE CONSTRUIDA 116.90 m²



FINESTRAT (ALICANTE)



PLANTA BAJA



PLANTA PISO



DIN A3 (1/75)

VIVIENDA PARCELAS 12 - 14 - 16 - 18

SUPERFICIE CONSTRUIDA 116.90 m²



FINESTRAT (ALICANTE)



DIN A3 (1/75)
0 1 2 3 4 5

"OUR EXPERIENCE IS YOUR GUARANTEE"