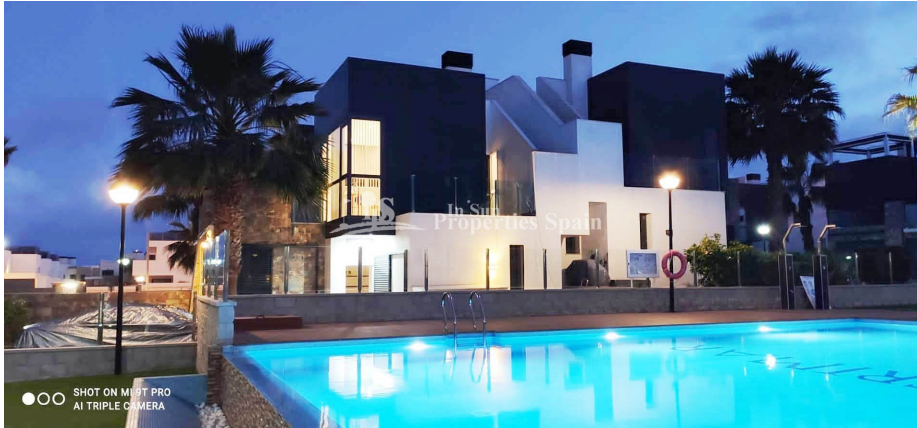




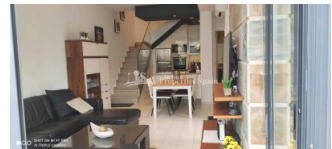
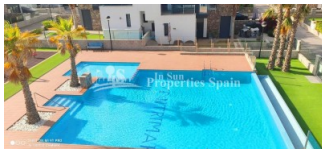
REF: # 8902

ORIHUELA COSTA (LOMAS DE CABO ROIG)



INFO

PRICE:	229.000 €
PROPERTY TYPE:	Townhouse (Quad)
CITY:	Orihuela Costa (Lomas de Cabo Roig)
BEDROOMS:	2
Bathrooms:	2
Build (m2):	81
Plot (m2):	150
Terrace (m2):	51
Year:	2015
Floor:	-
Old price	239.900 €



DESCRIPTION

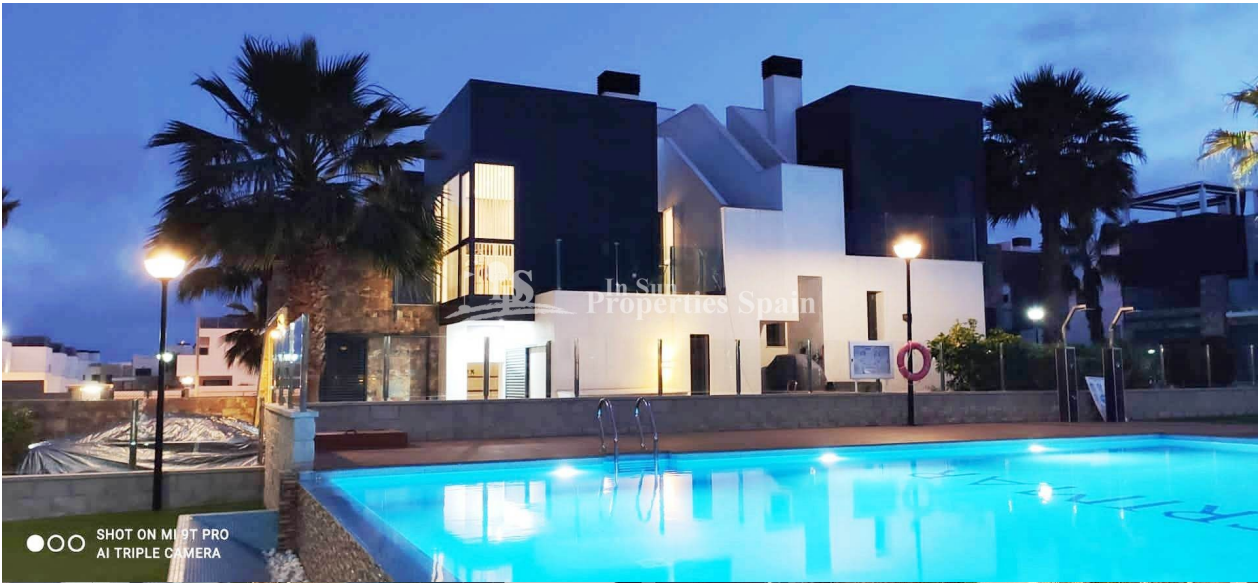
Located within OASIS HILL – LOMAS DE CABO ROIG is this lovely MODERN QUAD HOUSE with a pleasant open aspect over the Community pool . The house is of 81m2 build and occupies a 150m2 plot. There is space within the plot to park a car and several storage areas. Internally you have a light and airy lounge an American style kitchen, complete with appliances and a bedroom and bathroom. To the first floor you have a double bedrooms with built in wardrobes ,en suite bathroom and 28m2 private terraces with stairs up to the 25m2 solarium where you can enjoy the sun all day long and the stunning sea and pool views, the perfect place to relax .Oasis Hill Community is gated and can only be accessed by residents. The property is in walking distance to the NEW Commercial Center-Lomas De Cabo Roig and Supermarket, Bars and Restaurants and only 2km/5 minute from La Zenia Boulevard, the largest open-air shopping center in Europe and to the Beach! Cabo Roig is a popular beach resort situated in between La Zenia to the north and Campoamor to the south and with easy access to Alicante and Murcia airport in approximately 50 minutes drive.

ENERGETIC CERTIFIED



STYLE	VIEWS	AIRCONDITIONING	DISTANCE TO :
<ul style="list-style-type: none">• Modern• Contemporary	<ul style="list-style-type: none">• Panoramic views• Sea views	<ul style="list-style-type: none">• Livingroom• Kitchen• Bedrooms	Beach : 2 Km
			Airport: 40 Km
			Town center : 2 Km
ORIENTATION	FURNITURE	PARKING	TAX
East	<ul style="list-style-type: none">• Furnished	Parking no Cars: 1	Community : 500 €
			I.B.I : 258 €
MAIN LIVING AREA	FLOORING	KITCHEN	GARDEN AND TERRACES
<ul style="list-style-type: none">• Storage• Bathroom en-suite	<ul style="list-style-type: none">• Tile floors	<ul style="list-style-type: none">• Open kitchen• Closed kitchen• Equipped kitchen	<ul style="list-style-type: none">• Open terrace• Exterior lights• Automatic watering system• Palm trees• Fenced• Stone walls• Private garden• Communal Garden
EXTRA			
<ul style="list-style-type: none">• Built in wardrobes• Reinforced door• Double glazed windows• Satellite TV• Storage room			

PROPERTY GALLERY





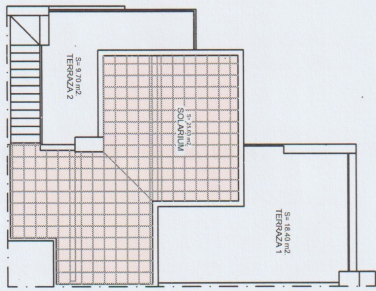




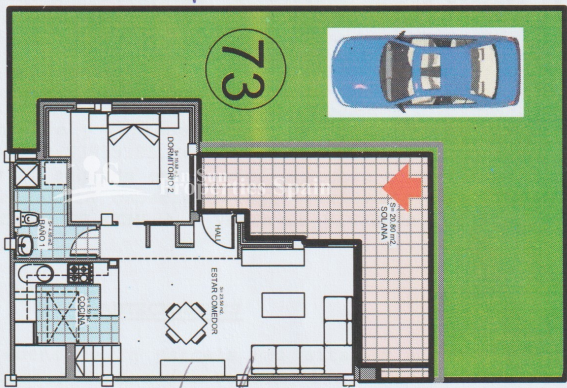
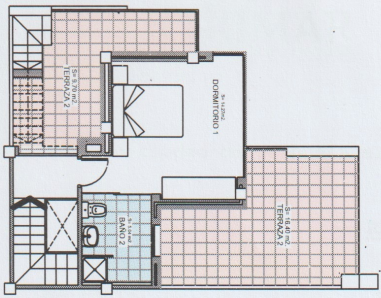




PLANTA SOLARIUM

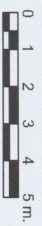


PLANTA PRIMERA



SUPERFICIES CONSTRUIDAS

- SUPERFICIE PLANTA BAJA 55.32 m²
- SUPERFICIE SOLANA 20.80 m²
- SUPERFICIE PLANTA PRIMERA 25.63 m²
- SUPERFICIE TERRAZAS 28.10 m²
- SUPERFICIE SOLARIUM 25.63 m²
- SUPERFICIE CONSTRUIDA TOTAL 80.95 m²







"OUR EXPERIENCE IS YOUR GUARANTEE"