

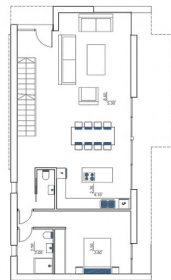


REF: # 7344

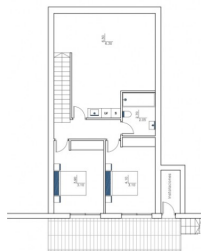
CALPE/MORAIRA (BENISSA COAST)

INFO

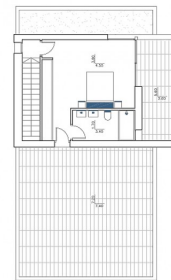
PRICE:	1.150.000 €
PROPERTY TYPE:	Villa
CITY:	Calpe/Moraira (Benissa Coast)
BEDROOMS:	4
Bathrooms:	3
Build (m2):	226
Plot (m2):	1.100
Terrace (m2):	-
Year:	-
Floor:	-
Old price	790.000 €



Superficie	Construccion	Compartidos
Planta Baja	81,85 m2	18,00 m2
Planta	144,15 m2	10,00 m2
Planta Baja	124,00 m2	18,00 m2
Planta	22,01 m2	22,01 m2



Superficie	Construccion	Compartidos
Planta Baja	81,85 m2	18,00 m2
Planta	144,15 m2	10,00 m2
Planta Baja	124,00 m2	18,00 m2
Planta	22,01 m2	22,01 m2



Superficie	Construccion	Compartidos
Planta Baja	81,85 m2	18,00 m2
Planta	144,15 m2	10,00 m2
Planta Baja	124,00 m2	18,00 m2
Planta	22,01 m2	22,01 m2

DESCRIPTION

Modern villa to be built in La Fustera, Benissa. The property is located close to the beach (400m) and amenities (200m) and enjoys sea views, especially from the first floor. The property is distributed over 3 floors. Ground floor; entrance, guest toilet, double bedroom with en-suite bathroom, open plan kitchen / dining / living room with large windows and access to the terraces, stairs to other floors. Top floor; double bedroom and en-suite bathroom / build-in wardrobe and large terrace. Underbuild; 2 double bedrooms, bathroom and washing room/storage room. The house is equipped with underfloor heating, air conditioning, modern kitchen with appliances and bathrooms with Roca sanitary, etc. In the exterior; large pool (5x10m), off road parking for 2 cars, ample terracing, entrance and pedestrian gate with inter-phone, garden with automatic watering system etc.

ENERGETIC CERTIFIED



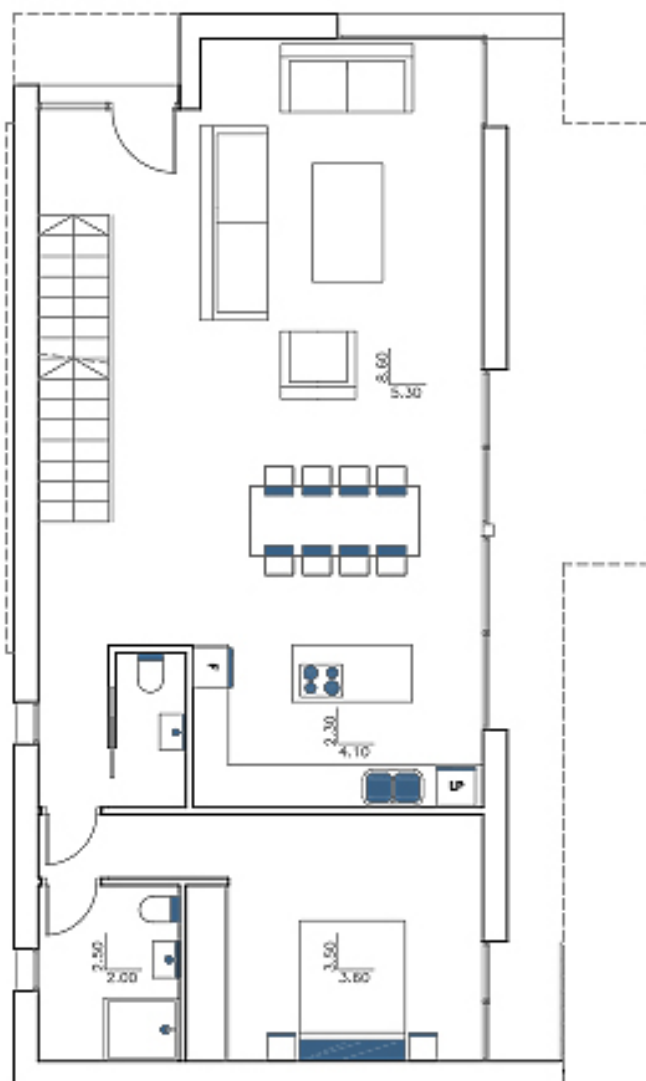
VIEWS

- Panoramic views
- Sea views

HEATING

- Central gas heating



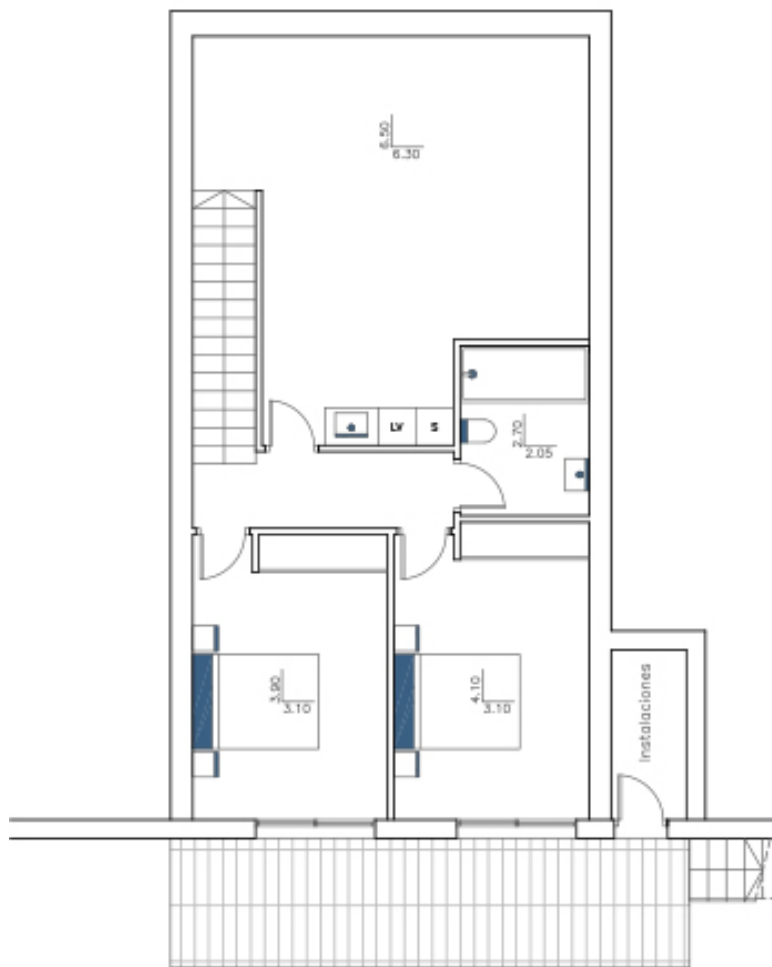


Sup. Parcela 1085.73 m²

Superficies	Construidas	Computable
<i>Planta Sótano</i>		
Vivienda	91.85 m ²	26.00 m ²
Porche	16.00 m ²	16.00 m ²
<i>Planta Baja</i>		
Vivienda	104.05 m ²	104.05 m ²
Porches	22.01 m ²	22.01 m ²
Piscina	50.00 m ²	
Terraza pisc.	99.15 m ²	
<i>Planta Alta</i>		
Vivienda	44.35 m ²	44.35 m ²
Porche	12.50 m ²	12.50 m ²
Terraza	57.72 m ²	
total	486.98 m ²	226.91 m ²

máx.: 271.43 m²

ANTEPROYECTO DE VIVIENDA UNIFAMILIAR AISLADA Y PISCINA

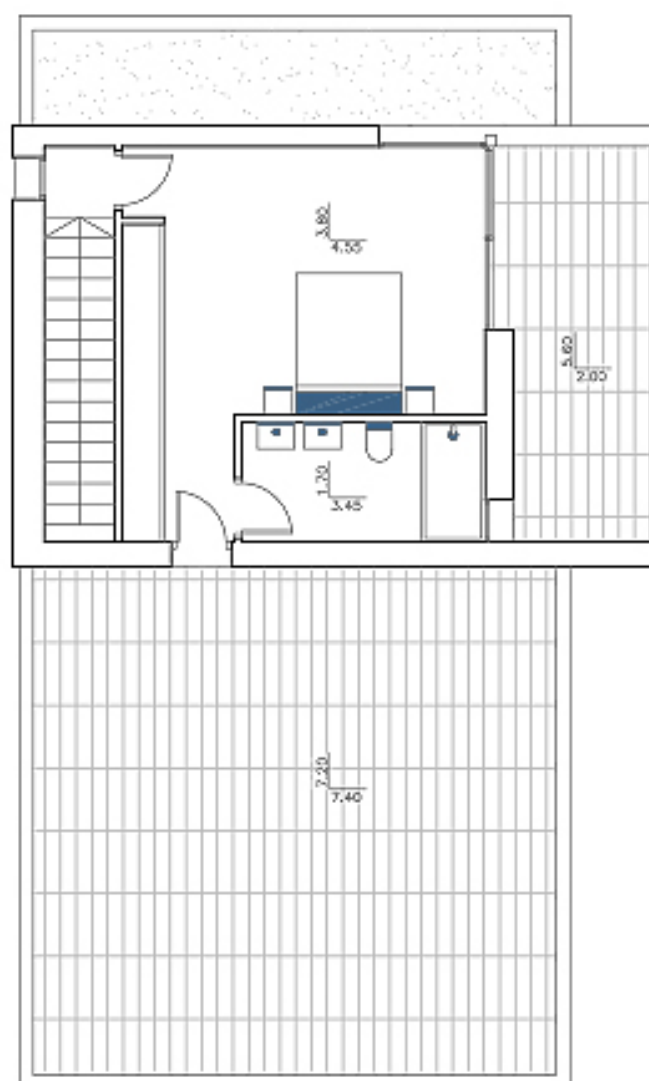


Sup. Parcela 1085.73 m²

Superficies	Construidas	Computable
<i>Planta Sótano</i>		
Vivienda	91.85 m ²	28.00 m ²
Porche	16.00 m ²	16.00 m ²
<i>Planta Baja</i>		
Vivienda	104.05 m ²	104.05 m ²
Porches	22.01 m ²	22.01 m ²
Piscina	50.00 m ²	
Terraza pisc.	99.15 m ²	
<i>Planta Alta</i>		
Vivienda	44.35 m ²	44.35 m ²
Porche	12.50 m ²	12.50 m ²
Terraza	57.72 m ²	
total	486.96 m ²	226.91 m ²

max: 271.43 m²

ANTEPROYECTO DE VIVIENDA UNIFAMILIAR AISLADA Y PISCINA

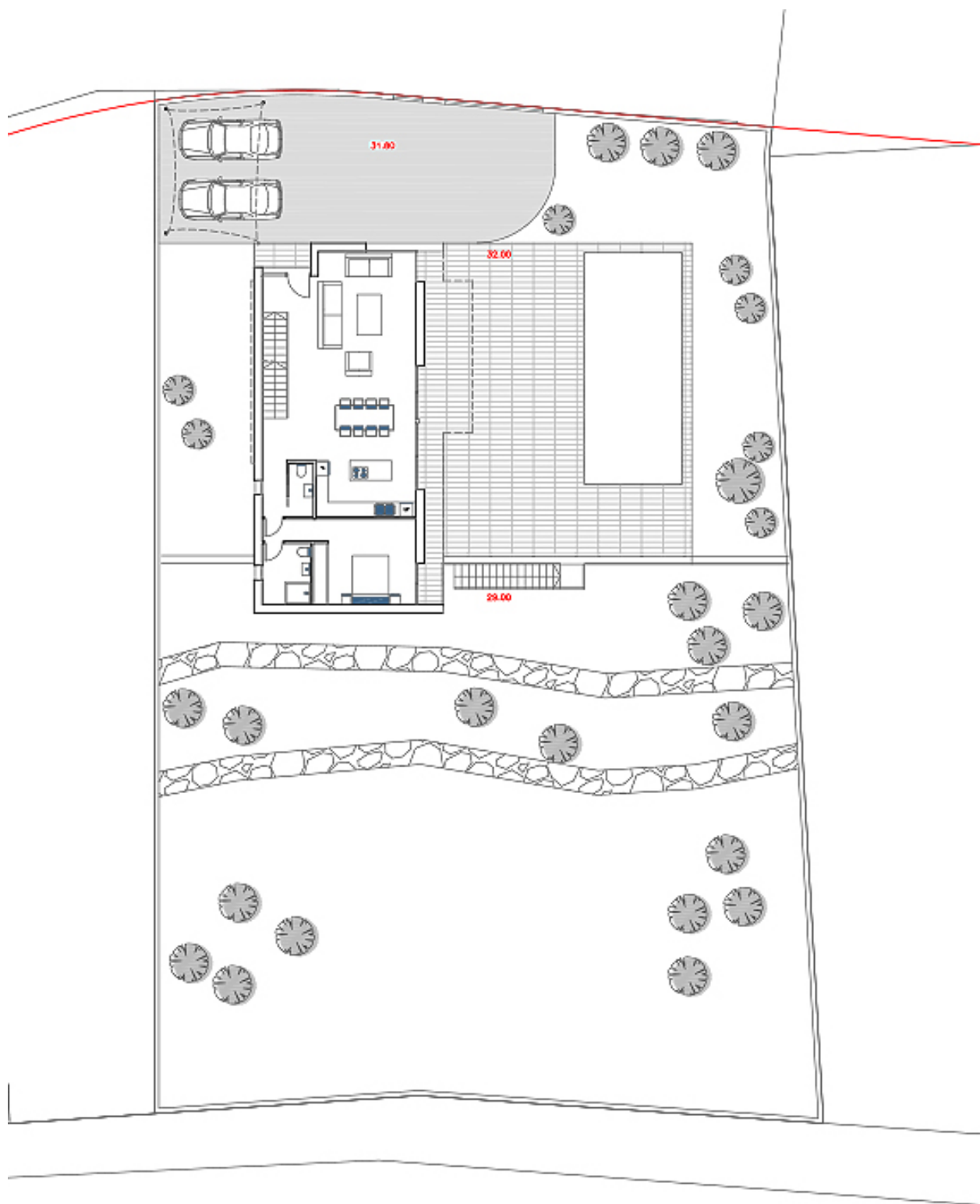


Sup. Parcela 1085.73 m²

Superficies	Construidas	Computable
<i>Planta Sótano</i>		
Vivienda	91.85 m ²	28.00 m ²
Porche	16.00 m ²	16.00 m ²
<i>Planta Baja</i>		
Vivienda	104.05 m ²	104.05 m ²
Porches	22.01 m ²	22.01 m ²
Piscina	50.00 m ²	
Terraza pisc.	99.15 m ²	
<i>Planta Alta</i>		
Vivienda	44.35 m ²	44.35 m ²
Porche	12.50 m ²	12.50 m ²
Terraza	57.72 m ²	
total	486.98 m ²	226.91 m ²

mas: 271.43 m²

ANTEPROYECTO DE VIVIENDA UNIFAMILIAR AISLADA Y PISCINA



ANTEPROYECTO DE VIVIENDA
UNIFAMILIAR AISLADA Y PISCINA

N

"OUR EXPERIENCE IS YOUR GUARANTEE"