



REF: # 6014

VILLAJOYOSA (EL TORRES)

Image not found
[https://www.cmsinmo.com/imagenes/uploads/inmu/4/6014/Entrada_de_urbanización_Aqua_\(alta_r](https://www.cmsinmo.com/imagenes/uploads/inmu/4/6014/Entrada_de_urbanización_Aqua_(alta_r)



INFO

PRICE:	258.500 €
PROPERTY TYPE:	Apartment
CITY:	Villajoyosa (El Torres)
BEDROOMS:	2
Bathrooms:	2
Build (m2):	91
Plot (m2):	-
Terrace (m2):	17 + 15
Year:	2018
Floor:	-
Old price	-



DESCRIPTION

Aqua Residencial Phase 1 is an enclosed private residential complex with 71 homes that have 1, 2, 3 and 4 bedrooms. All the details have been studied carefully in this project to get the best views from every orientation. Different types of meticulously designed exclusive homes: townhouse, duplex, apartment and penthouse, all in one complex, and with large terraces looking onto the Mediterranean Sea. Top building standards and first class material such as thermal insulation. Prices from 258.500 € Fully equipped kitchens with glossy finish kitchen units, ceramic hob, extractor fans, as well as an electric oven and microwave. Fully installed ducted HVAC unit with hot and cold air. There are elegant

white tower blocks in the complex with spacious green areas between them. Maximum security thanks to a videa surveillance system.



STYLE	VIEWS	AIRCONDITIONING	DISTANCE TO :
<ul style="list-style-type: none">• Modern	<ul style="list-style-type: none">• Panoramic views• Sea views• Mountain views	<ul style="list-style-type: none">• Central airconditioning	Beach : 50 m <hr/> Airport: 50 Km <hr/> Town center : 500 m
ORIENTATION	FURNITURE	MAIN LIVING AREA	FLOORING
South <hr/>	<ul style="list-style-type: none">• Not furnished	<ul style="list-style-type: none">• Bathroom en-suite	<ul style="list-style-type: none">• Laminate floors• Stone floors
KITCHEN	GARDEN AND TERRACES	EXTRA	
<ul style="list-style-type: none">• Open kitchen• Equipped kitchen	<ul style="list-style-type: none">• Covered terrace• Open terrace• Exterior lights• Palm trees• Play Ground• Fenced• Electric gate• Communal Garden	<ul style="list-style-type: none">• Video security• Lift	

PROPERTY GALLERY

Image not found

[https://www.cmsinmo.com/imagenes/uploads/inmu/4/6014/Entrada_de_urbanización_Aqua_\(alta_resolución\)_preview.jpg](https://www.cmsinmo.com/imagenes/uploads/inmu/4/6014/Entrada_de_urbanización_Aqua_(alta_resolución)_preview.jpg)













APARTMENTS / LAUNCHING PRICE:

1 bedroom: between 140.000 € and 156.000 €
2 bedrooms: between 189.000 € and 280.000 €
3 bedrooms: between 219.500 € and 336.000 €

TOWER BLOCK S2 / FLOOR 4 / DOOR D

USABLE FLOOR AREA	41,10 m ²
TERRACE SURFACE AREA	21,11 m ²
GROSS FLOOR AREA /including terraces/	72,56 m ²



Impassable communal area



TOWER BLOCK S1 / FLOOR 4 / DOOR B

USABLE FLOOR AREA	60,81 m ²
TERRACE SURFACE AREA	32,62 m ²
GROSS FLOOR AREA /including terraces/	110,62 m ²



Impassable communal area



NB:
This document has been written for information purposes, the plans and the surface areas stated herein might change according to the technical requirements of the building project. All the furniture, including that of the kitchen, cupboards and electrical household appliances, is just for decoration.

The price do not include VAT and they could change without prior warning.
Non-binding document.

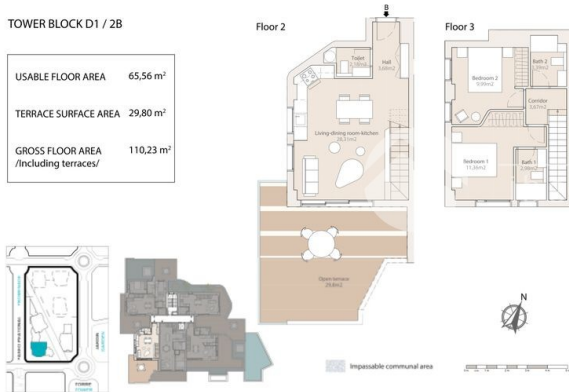


DUPLEX / LAUNCHING PRICE:

2 bedrooms: between 262.500 € and 321.000 €
3 bedrooms: between 314.000 € and 349.000 €

TOWER BLOCK D1 / 2B

USABLE FLOOR AREA	65,56 m ²
TERRACE SURFACE AREA	29,80 m ²
GROSS FLOOR AREA /Including terraces/	110,23 m ²



NB:
This document has been written for information purposes, the plans and the surface areas stated herein might change according to the technical requirements of the building project. All the furniture, including that of the kitchen, cupboards and electrical household appliances, is just for decoration.

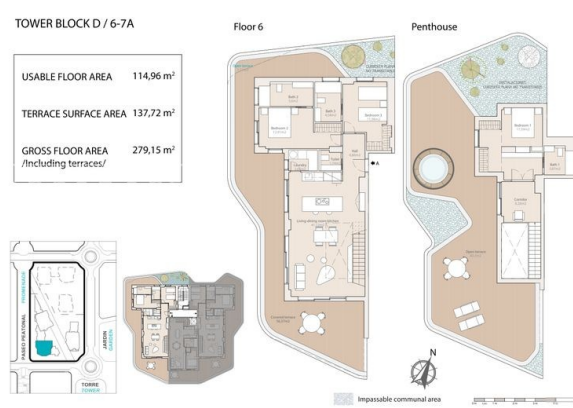


PENTHOUSE-DUPLEX HOUSE / LAUNCHING PRICE:

2 bedrooms: 419.500 €
3 bedrooms: between 339.000 € and 647.500 €
4 bedrooms: between 499.000 € and 599.500 €

TOWER BLOCK D / 6-7A

USABLE FLOOR AREA	114,96 m ²
TERRACE SURFACE AREA	137,72 m ²
GROSS FLOOR AREA /Including terraces/	279,15 m ²



The prices do not include VAT and they could change without prior warning.
Non-binding document.

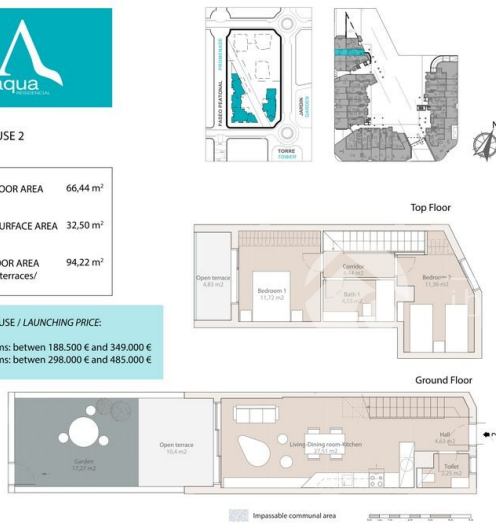


TOWNHOUSE 2

USABLE FLOOR AREA	66,44 m ²
TERRACE SURFACE AREA	32,50 m ²
GROSS FLOOR AREA /Including terraces/	94,22 m ²

TOWNHOUSE / LAUNCHING PRICE:

2 bedrooms: between 188.500 € and 349.000 €
3 bedrooms: between 298.000 € and 485.000 €



NB:
This document has been written for information purposes, the plans and the surface areas stated herein might change according to the technical requirements of the building project. All the furniture, including that of the kitchen, cupboards and electrical household appliances, is just for decoration.



TOWNHOUSE 1

USABLE FLOOR AREA	94,57 m ²
TERRACE SURFACE AREA	47,24 m ²
GROSS FLOOR AREA /Including terraces/	138,47 m ²

Ground Floor



The prices do not include VAT and they could change without prior warning.
Non-binding document.











"OUR EXPERIENCE IS YOUR GUARANTEE"