



REF: # 5980

VILLAJOYOSA



INFO

PRICE:	370.000 €
PROPERTY TYPE:	Apartment (Penthouse)
CITY:	Villajoyosa
BEDROOMS:	3
Bathrooms:	2
Build (m2):	100
Plot (m2):	-
Terrace (m2):	79
Year:	-
Floor:	4
Old price	-



DESCRIPTION

New apartment from well known builder, just 150 meters from one of Costa Blanca's finest beaches. All apartments have sea views, large terraces, very modern design. The apartment will consist of 3 bedrooms and 2 bathrooms. Very modern and fully equipped kitchen with the latest and latest appliances. Large living room with glass doors that go from ceiling to floor. The railing around the entire terrace will be of glass that will give a very airy feel. Floor heating in the bathroom. Air conditioning in every room. Electric blinds. Smart home system. Garage in the basement. Common pool and garden. Elevator About the area Villajoyosa the 'joyful village', with its about 20000 citizens lies just in the south of Benidorm, about 35 km north of Alicante. It is famous as a center for the production of chocolate, which could be the reason for its name! With its lovely colored houses in the town center for most people Villajoyosa is the ideal counterpart to the sometimes crowded Benidorm. At an average of 26°C in summer and 15°C in winter, the warm and dry Mediterranean climate with approximately 300 sunny days

per year makes it easy to enjoy life whether you like lazy beach days or mountain hikes. Villajoyosa has over 3 kilometers of beaches, a lovely marina, a beach front promenade all along the central beach and the iconic multi colored houses of the fishermen. A visit to the harbour in the afternoon, offers a possibility to see the catch of the day be auctioned at the market. The "Doctor Esquerdo" boulevard, stretches along the wide beach upon which the town has been built. The history of the town can be viewed at the annual "Moors and Christians" fiesta which is held in July. From Villajoyosa you have easy access to Puig Campana mountain, 1362 m high fantastic for hiking/cycling, Asía Garden Hotel, 3 golf courses, Villa Aitana Hotel, Terra Mitica Theme Park and more The Avenue is connected directly to the exit of the AP-7 La Marina, Crossroads, Leroy Merlin, Mercadona, Decathlon, Zara etc. And next to this all the services of the most powerful tourist center of the Costa Blanca Due to the proximity to the coast you can enjoy the fabulous beaches of Levante, Poniente, the Cala de Finestrat and the Villajoyosa and Calpe with more than 13 km in length that are among the best in Europe awarded the European Union blue flag awarded by the quality of its waters, by cleaning and services offered.



STYLE	VIEWS	AIRCONDITIONING	DISTANCE TO :
<ul style="list-style-type: none">• Modern	<ul style="list-style-type: none">• Panoramic views• Sea views• Mountain views	<ul style="list-style-type: none">• Central airconditioning	Beach : 100 m Airport: 40 Km Town center : 100 m
ORIENTATION	FURNITURE	PARKING	MAIN LIVING AREA
South	<ul style="list-style-type: none">• Not furnished	Garage no Cars : 1 Parking no Cars: 1	<ul style="list-style-type: none">• Bathroom en-suite
FLOORING	KITCHEN	GARDEN AND TERRACES	HEATING
<ul style="list-style-type: none">• Tile floors	<ul style="list-style-type: none">• Open kitchen• Equipped kitchen• Granite countertop	<ul style="list-style-type: none">• Covered terrace• Open terrace• Exterior lights• Automatic watering system• Palm trees• Fenced• Electric gate• Communal Garden	<ul style="list-style-type: none">• Floor heating
EXTRA			
<ul style="list-style-type: none">• Built in wardrobes• Alarm• Reinforced door• Double glazed windows• Door bell with camera• Satellite TV• Video security• Lift• Internet			









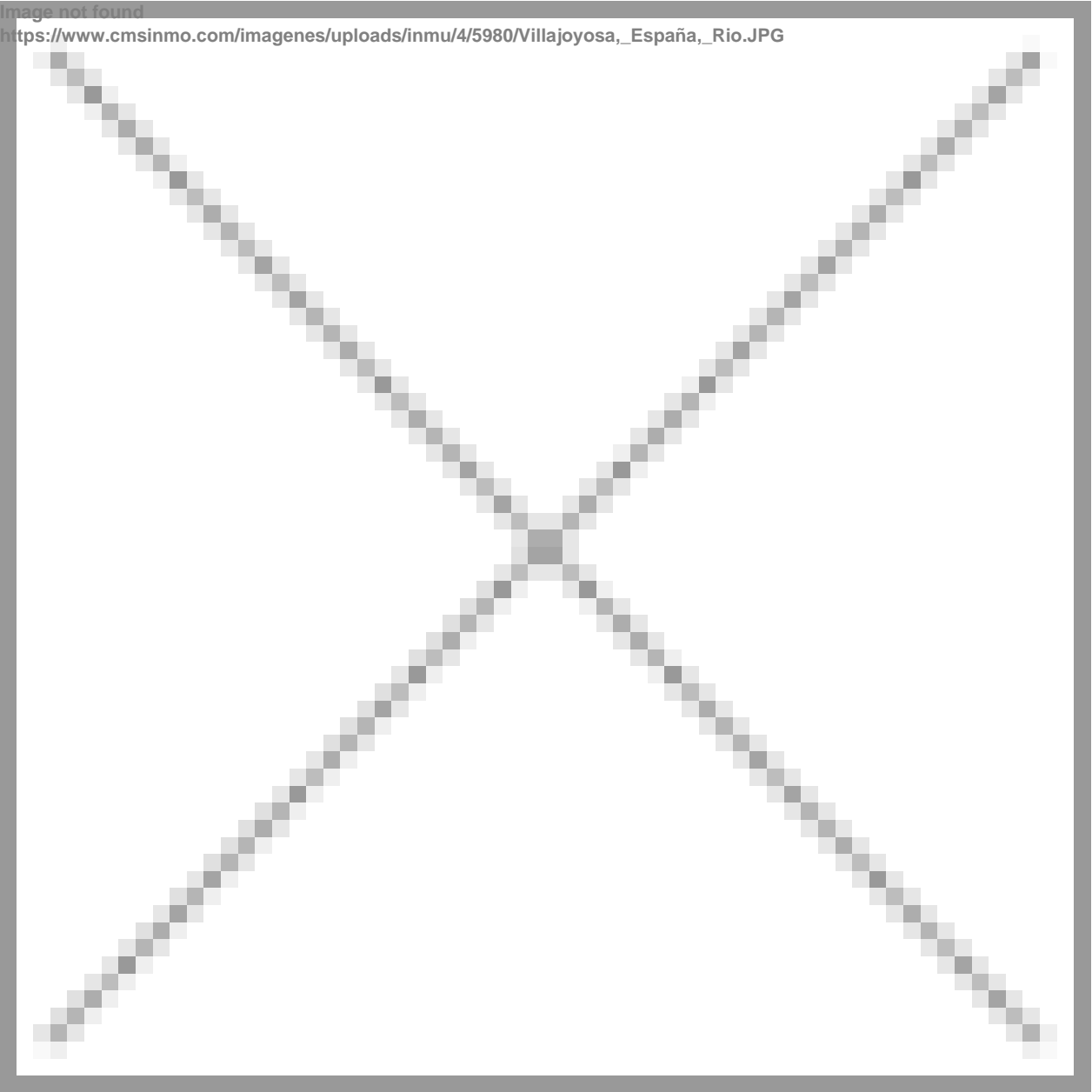






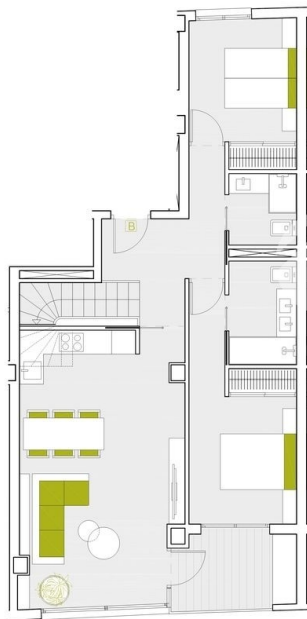
Image not found

https://www.cmsinmo.com/imagenes/uploads/inmu/4/5980/Villajoyosa,_España,_Rio.JPG

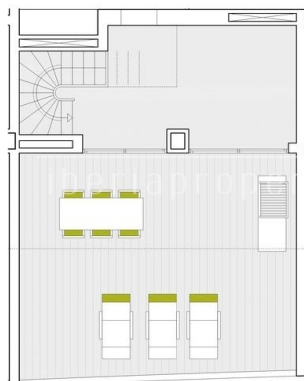


VIVIENDA planta 3ª y 4ª

DÚPLEX tipo B



ESPACIO ADICIONAL Y SOLÁRIUM



E 1:75 DIN A3 SEP. 2018



MAR

SUPERFICIE ÚTIL VIVIENDA 3B

[01] VESTÍBULO	3.2 m²
[02] DISTRIBUIDOR	3.0 m²
[03] ESTAR-COMEDOR-COCINA	27.5 m²
[04] DORMITORIO 1	12.2 m²
[05] BAÑO 1	4.4 m²
[06] DORMITORIO 2	9.3 m²
[07] BAÑO 2	3.0 m²
[08] ESCALERA	4.5 m²
[09] TERRAZA	6.0 m²

SUPERFICIE CONSTRUIDA VIVIENDA 3B

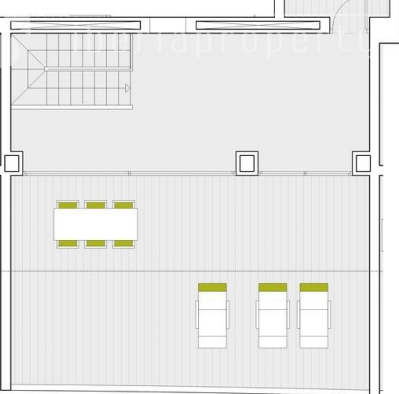
SUPERFICIE EN PLANTA 3ª	84 m²
SUPERFICIE ESPACIO ADICIONAL	16 m²
SUPERFICIE TERRAZA SOLÁRIUM	39 m²
SUPERFICIE TOTAL	139 m²

VIVIENDA planta 3ª y 4ª

DÚPLEX tipo F



ESPACIO ADICIONAL Y SOLÁRIUM



E 1:75 DIN A3 SEP. 2018



MAR

SUPERFICIE ÚTIL VIVIENDA 3F

[01] VESTÍBULO	2.1 m²
[02] DISTRIBUIDOR	3.5 m²
[03] ESTAR-COMEDOR-COCINA	22.0 m²
[04] DORMITORIO 1	12.8 m²
[05] BAÑO 1	4.2 m²
[06] DORMITORIO 2	9.0 m²
[07] BAÑO 2	3.0 m²
[08] ESCALERA	5.8 m²
[09] TERRAZA	12.0 m²

SUPERFICIE CONSTRUIDA VIVIENDA 3F

SUPERFICIE EN PLANTA 3ª	85 m²
SUPERFICIE ESPACIO ADICIONAL	24 m²
SUPERFICIE TERRAZA SOLÁRIUM	62 m²
SUPERFICIE TOTAL	171 m²

Image not found

https://www.cmsinmo.com/imagenes/uploads/inmu/4/5980/PLANO_DUPLEX_PLANTA_SOLÁRIUMS.jpg



ref: 612 OCT 2018

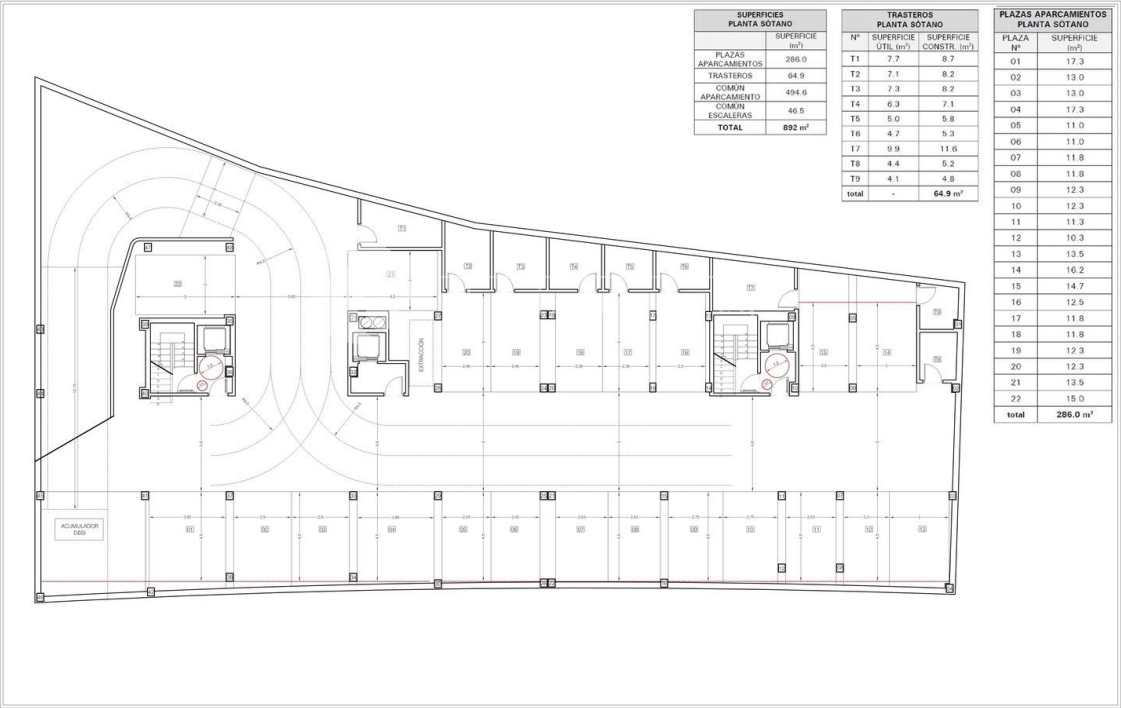
EDIFICIO DE VIVIENDAS Y APARCAMIENTOS PARCELA N°5 UE-4 DEL PGOU LA VILA JOIOSA		
ref: 612	esc: 1:150	PLANOS DE DEFINICIÓN ARQUITECTÓNICA DEL EDIFICIO
OCT 2018	ISO DIN-A3	PLANTA TERCERA



ref: 612 MAR 2018

PROYECTO BÁSICO EDIFICIO DE VIVIENDAS, LOCALES Y APARCAMIENTOS PARCELA N°5 UE-4 DEL PGOU LA VILA JOIOSA		
ref: 612	esc: 1:150	PLANOS DE DEFINICIÓN ARQUITECTÓNICA DEL EDIFICIO
MAR 2018	ISO DIN-A3	COTAS Y SUPERFICIES PLANTA SÓTANO

PLANO N°
DA.2.01



"OUR EXPERIENCE IS YOUR GUARANTEE"