



REF: # 5876

FINESTRAT (SIERRA CORTINA)



INFO

PRICE:	345.000 €
PROPERTY TYPE:	Villa (Semi detached)
CITY:	Finestrat (Sierra Cortina)
BEDROOMS:	3
Bathrooms:	3
Build (m2):	139
Plot (m2):	268
Terrace (m2):	24
Year:	2020
Floor:	2
Old price	-



DESCRIPTION

Townhouses with 3 bedrooms and 3 bathrooms, with own pool, parking for vehicles and large garden Distance to the sea: hasta 2km, Construction year: 2020, Orientation: South, Views: Sea, Mountain, ,Environment: Beach, Golf, .

ENERGETIC CERTIFIED



STYLE	VIEWS	AIRCONDITIONING	DISTANCE TO :
<ul style="list-style-type: none">• Modern	<ul style="list-style-type: none">• Panoramic views• Sea views• Mountain views	<ul style="list-style-type: none">• Central airconditioning	Beach : 2 Km Airport: 50 Km Town center : 500 m
ORIENTATION	FURNITURE	PARKING	MAIN LIVING AREA
South	<ul style="list-style-type: none">• Not furnished	Garage no Cars : 1 Parking no Cars: 2	<ul style="list-style-type: none">• Storage• Bathroom en-suite
FLOORING	KITCHEN	GARDEN AND TERRACES	EXTRA
<ul style="list-style-type: none">• Tile floors	<ul style="list-style-type: none">• Open kitchen• Equipped kitchen	<ul style="list-style-type: none">• Covered terrace• Open terrace• Exterior lights• Automatic watering system• Fruit trees• Palm trees• Landscaped• Stone walls• Private garden	<ul style="list-style-type: none">• Built in wardrobes• Alarm• Reinforced door• Double glazed windows• Satellite TV• Security guard• Video security• Storage room• Laundry room• Internet









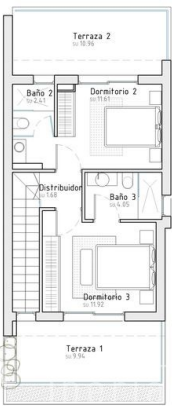
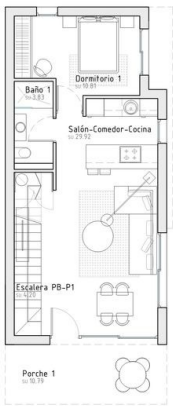




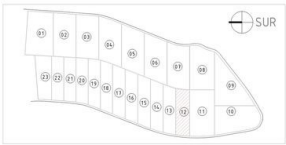








PARCELA 12	
Superficie de parcela	289,56 m ²
Superficie construida vivienda	103,17 m ²
Superficie construida PB	57,62 m ²
Superficie construida P1	40,15 m ²
Superficie terraza cubierta PB (100%)	10,79 m ²
Superficie terraza descubierta solarium P1	20,90 m ²
Piscina	18,00 m ²
Total superficies construidas proyecto	147,46m ²



VIVIENDA PAREADA - FINESTRAT (ALICANTE)	
PARCELA 12 (3 dormitorios)	E: 1/100

"OUR EXPERIENCE IS YOUR GUARANTEE"