



REF: # 4287

ORIHUELA COSTA (SAN JAVIER)



INFO

PRICE:	325.000 €
PROPERTY TYPE:	Villa
CITY:	Orihuela Costa (San Javier)
BEDROOMS:	3
Bathrooms:	3
Build (m2):	134
Plot (m2):	331
Terrace (m2):	43
Year:	-
Floor:	-
Old price	315.000 €

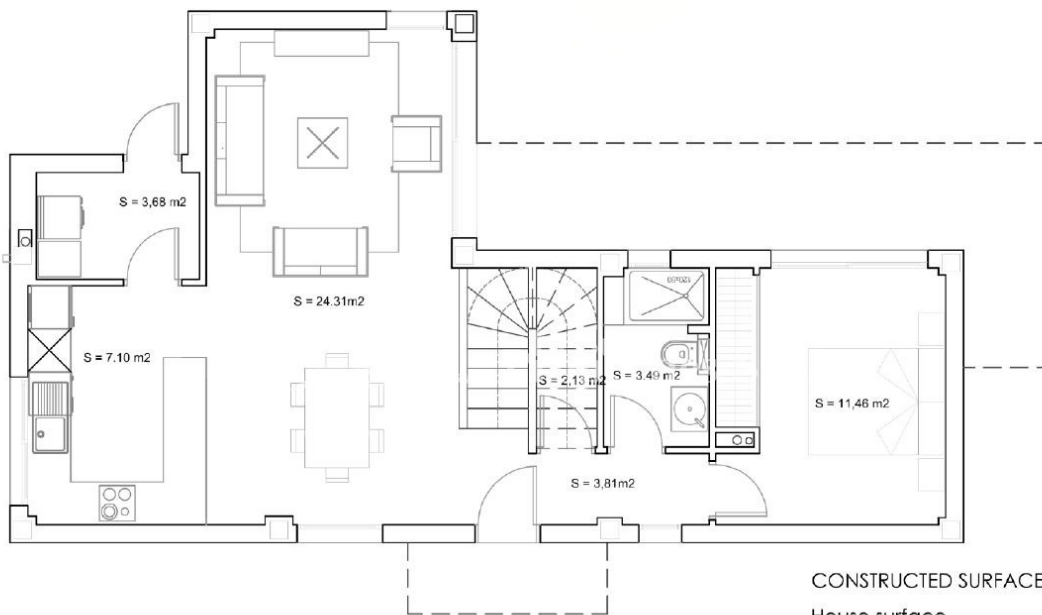
DESCRIPTION

KEY READY VILLA located in SANTIAGO DE LA RIBERA (Murcia) 10 minutes walk from the BEACH. A luxury detached villa close to the sea including a plot of 315m2, 3 bedrooms, 3 bathrooms (2 ensuite), with a very nice private swimming pool of 3x6 and a completely finished garden and includes white goods. The two-storey Villa boasts 3 bedrooms, 3 bathrooms, modern kitchen and mezzanine level on the first floor overlooking the open-plan lounge/dining room which is fitted with floor-to-ceiling windows allowing the natural light to flood through and leading to a private garden and pool. The property includes off-road parking for two cars. The development is just a 10-minute walk from the beach, with local bus/train links only ten minutes from the properties. RMU Corvera International Airport is a 30 minute drive and Alicante Airport only 45 minutes via the AP-7 highway and N332 coast road.

ENERGETIC CERTIFIED

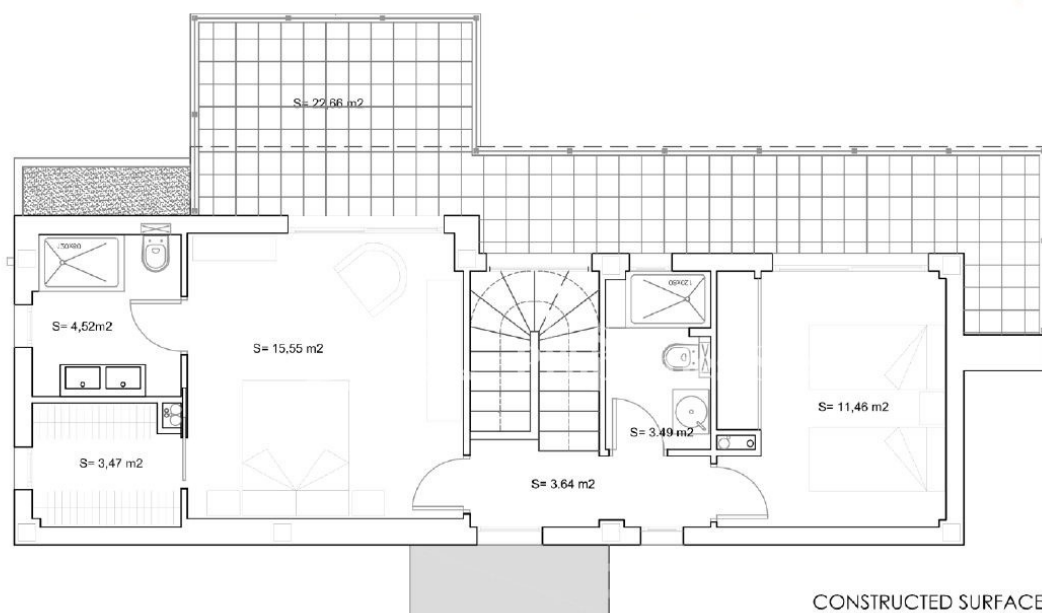


STYLE	VIEWS	AIRCONDITIONING	DISTANCE TO :
<ul style="list-style-type: none">Contemporary	<ul style="list-style-type: none">Panoramic views	<ul style="list-style-type: none">Central airconditioning	Beach : 500 m
			Airport: 10 Km
			Town center : 500 m
ORIENTATION	FURNITURE	PARKING	MAIN LIVING AREA
South west	<ul style="list-style-type: none">Not furnished	Parking no Cars: 1	<ul style="list-style-type: none">Bathroom en-suite
FLOORING	KITCHEN	GARDEN AND TERRACES	EXTRA
<ul style="list-style-type: none">Tile floorsStone floors	<ul style="list-style-type: none">Open kitchenEquipped kitchenGranite countertop	<ul style="list-style-type: none">Covered terraceOpen terraceExterior lightsAutomatic watering systemPalm treesLandscapedFencedStone wallsPrivate garden	<ul style="list-style-type: none">Built in wardrobesDouble glazed windowsStorage room



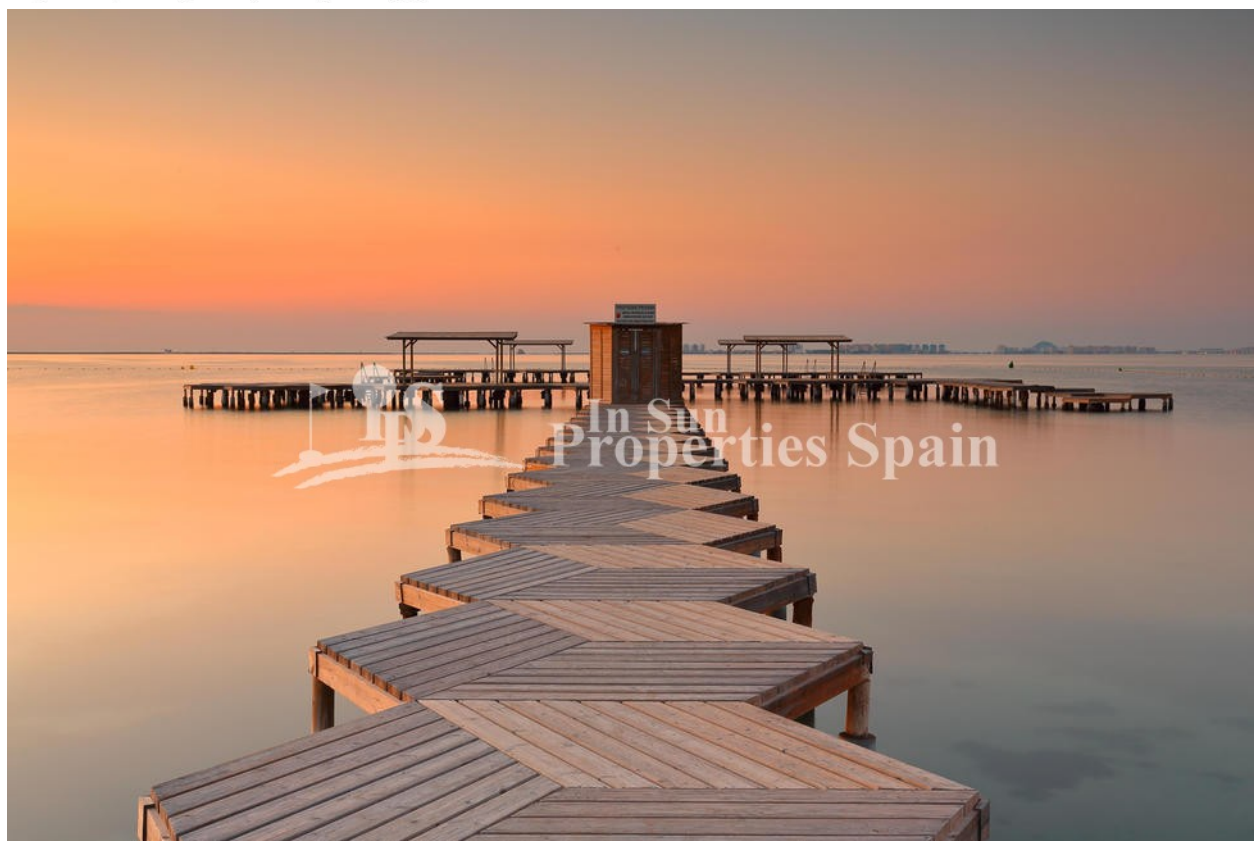
CONSTRUCTED SURFACES

House surface	143,85 m ²
Ground floor surf.	79,32 m ²
First floor surf.	64,53 m ²
Downstair terrace surf.	20,46 m ²
Upstair terrace surf.	22,66 m ²



CONSTRUCTED SURFACES

House surface	143,85 m ²
Ground floor surf.	79,32 m ²
First floor surf.	64,53 m ²
Downstair terrace surf.	20,46 m ²
Upstair terrace surf.	22,66 m ²







"OUR EXPERIENCE IS YOUR GUARANTEE"