



REF: # 11959

LOS ALCAZARES (SERENA GOLF)



INFO

PRICE: 435.000 €

PROPERTY TYPE:

CITY: Los Alcazares (Serena Golf)

BEDROOMS: 3

Bathrooms: 2

Build (m2): 93

Plot (m2): -

Terrace (m2): 91

Year: -

Floor: -

Old price -



DESCRIPTION

NEW BUILD RESIDENTIAL IN LOS ALCAZARES New Build residential is composed of 32 apartments and penthouses with 2 and 3 bedrooms and 9 exclusive villas combining modern design, quality and functionality. The unbeatable location offers amazing views to golf and the Mar Menor sea. Modern properties with open plan kitchen and the lounge area, fitted wardrobes, terraces, parking space and storage rooms. Penthouses has private solarium. Residential located in a frontline of the prestigious golf course "La Serena Golf". This golf course is well renowned for its lakes and vegetation that interweave with the golf course. The water and lakes are present in 16 of the 18 holes, but all the course is designed to offer the golfer different strategies in each hole. Another aspect that makes this golf course unique is that it's connected by walking to the city centre, something impossible to find in other golf locations that allow us to enjoy the calm and the beauty of the area without refusing the access to the services that Los Alcázares offers. Residential located in Los Alcázares an exceptional area on the Costa Cálida at only 25 minutes from Murcia

airport and 55 min from Alicante airport. The area is connected through highway with the cities of Cartagena, Murcia and Alicante and the rest of the beaches of the Costa Cálida and the Costa Blanca.



VIEWS

- Panoramic views
- Sea views

EXTRA

- Lift

AIRCONDITIONING

- Central airconditioning

PARKING

Parking no Cars: 1

**GARDEN AND
TERRACES**

- Fenced

PROPERTY GALLERY



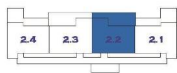












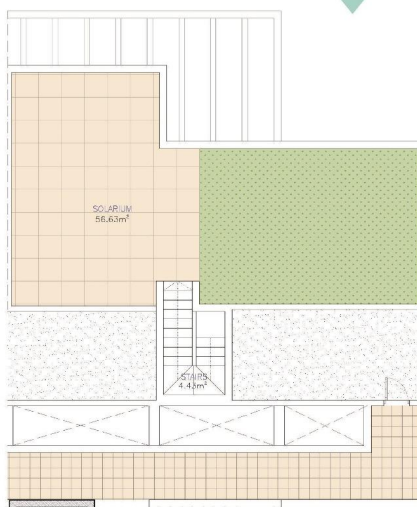
APART. 2.2

SUPERFICIE CONSTRUIDA	93,19 m ²
BUILT AREA	93,19 m ²
TERRAZA	29,56 m ²
TERRACE	29,56 m ²
SOLARIUM	56,63 m ²
SOLARIUM	56,63 m ²
TOTAL	179,38 m ²



MAIN FLOOR

2ª PLANTA
FIRST FLOOR

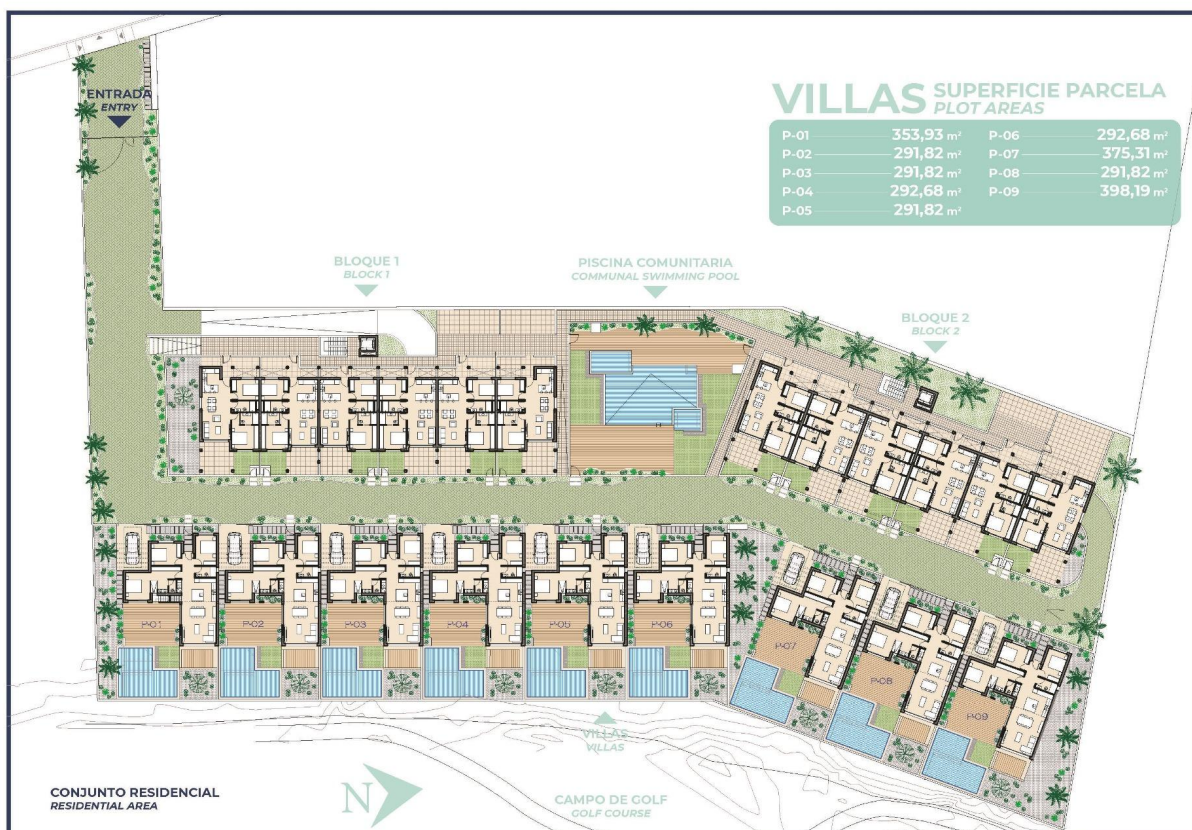


ROOF FLOOR

SOLARIUM
SOLARIUM

VILLAS SUPERFICIE PARCELA PLOT AREAS

P-01	353,93 m ²	P-06	292,68 m ²
P-02	291,82 m ²	P-07	375,31 m ²
P-03	291,82 m ²	P-08	291,82 m ²
P-04	292,68 m ²	P-09	398,19 m ²
P-05	291,82 m ²		



"OUR EXPERIENCE IS YOUR GUARANTEE"