



REF: # 11953

TORREVIEJA (PUNTA PRIMA)



INFO

PRICE: 424.000 €

PROPERTY TYPE:

CITY: Torrevieja (Punta Prima)

BEDROOMS: 2

Bathrooms: 2

Build (m2): 75

Plot (m2): -

Terrace (m2): 59

Year: -

Floor: -

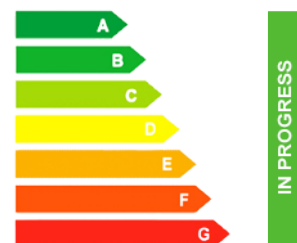
Old price -



DESCRIPTION

NEW BUILD RESIDENTIAL COMPLEX IN PUNTA PRIMA New Build residential complex of 220 apartments in Punta Prima, Torrevieja. Apartments with 2 and 3 bedrooms and 2 bathrooms, open plan kitchen with living room, fitted wardrobes, all of them with large terraces. Ground floor apartments with garden and penthouses with solarium. All homes are delivered with an underground parking space. The residential has garden areas with swimming pools and paddle tennis court. Children can enjoy their own children's pool, as well as a children's play area. Punta Prima, located just 5 km from Torrevieja, is characterized by good communication and health infrastructures, the proximity to Alicante airport, and the number of services open throughout the year. Just 10 km away we can find the golf courses of Villamartín, Campoamor, Las Ramblas, Las Colinas and Lo Romero, as well as the commercial centres of La Zenia and Habaneras.

ENERGETIC CERTIFIED



VIEWS

- Panoramic views

AIRCONDITIONING

- Central airconditioning

PARKING

Parking no Cars: 1

MAIN LIVING AREA

- Gym

GARDEN AND TERRACES

- Fenced

EXTRA

- Lift

PROPERTY GALLERY





Los imágenes con derechos reservados en esta publicación son obra de los autores, no comunicables y están sujetos a la legislación de propiedad intelectual.
This is not a contract. The images are for illustrative purposes only. The project is subject to change.



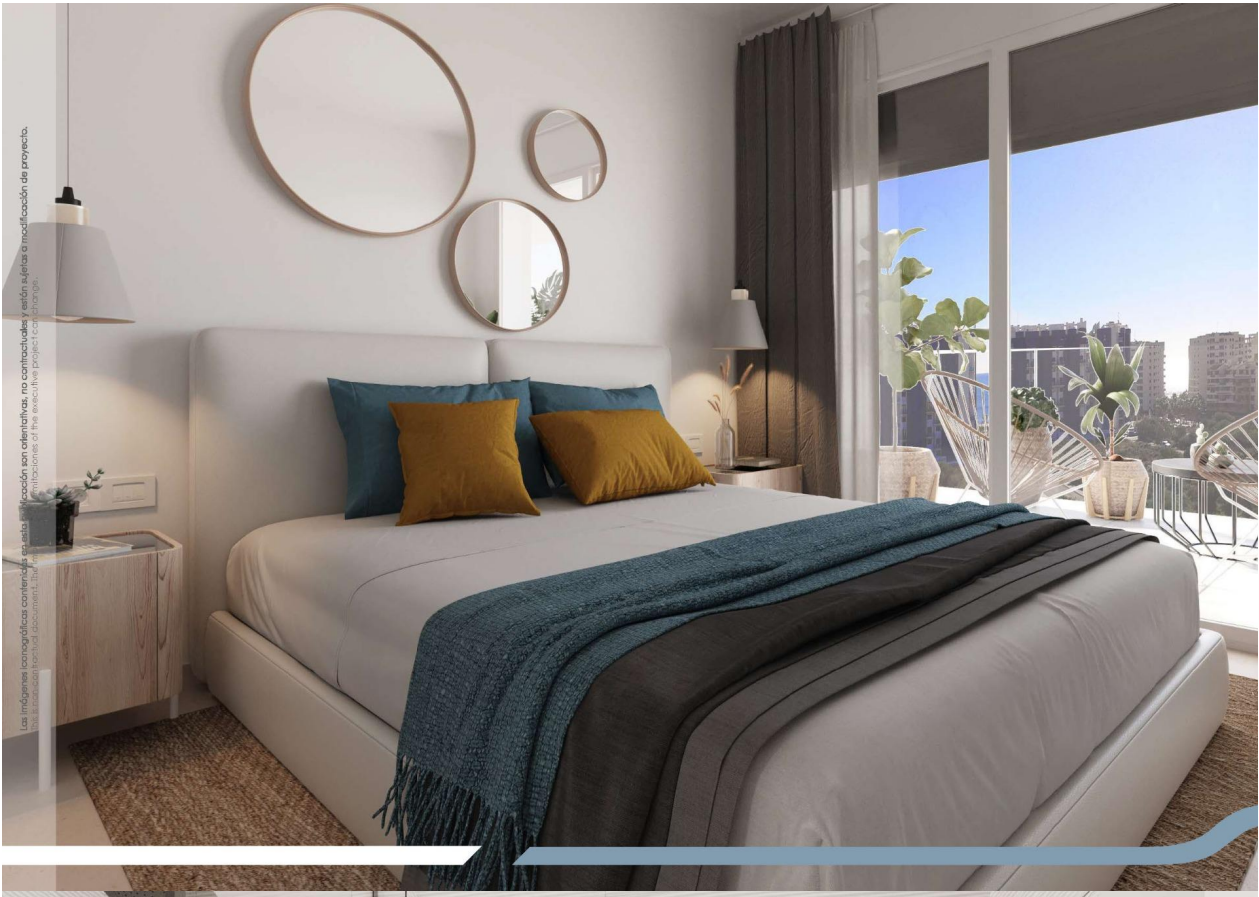
Las imágenes son meramente ilustrativas y no representan un contrato de compraventa. Este es un proyecto de construcción que puede sufrir modificaciones sin previo aviso. © 2024. Todos los derechos reservados.



Las imágenes iconográficas contenidas en esta publicación son orientativas, no contractuales y están sujetas a modificación de proyecto.
The illustrative iconographic content in this publication is orientative, non-contractual and is subject to change.



Las imágenes iconográficas contenidas en esta publicación son orientativas, no contractuales y están sujetas a modificación de proyecto.
The illustrative iconographic content in this publication is orientative, non-contractual and is subject to change.



Las imágenes conceptuales contenidas en esta publicación son orientativas, no contractuales y están sujetas a modificación de proyecto.
The illustrative conceptual images contained in this publication are for information only and are subject to change.

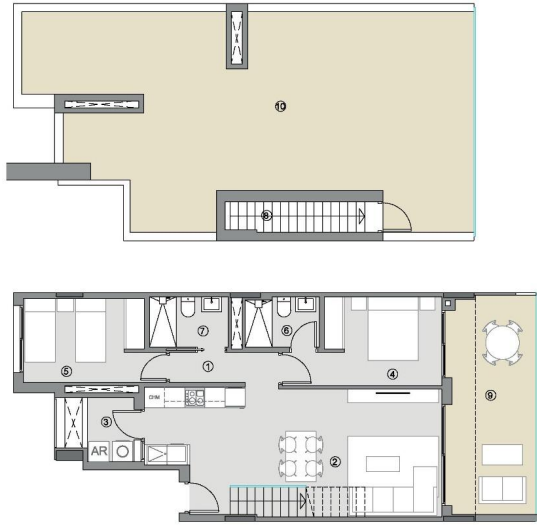


Las imágenes conceptuales contenidas en esta publicación son orientativas, no contractuales y están sujetas a modificación de proyecto.
The illustrative conceptual images contained in this publication are for information only and are subject to change.



VIVIENDA TIPO 1A /HOUSE TYPE 1A

ESC 1-2-4-6 / STAIRS 1-2-4-6
7-8-9-10-11 / 6-7-8-9-10-11
PP T SOLARIUM / PP AND SOLARIUM



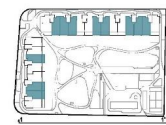
0 1 2 3 4 5 m E:1/125

SUPERFICIES ÚTILES / USEFUL AREA

SUPERFICIES ÚTILES INTERIORES / USEFUL INTERIOR AREA	
1 PASO / HALLWAY	3.12 m ²
2 ESTAR-COM-COCINA / KITCHEN-LIVING	31.54 m ²
3 TENDIDO (100%) / UTILITY ROOM	2.66 m ²
4 DORMITORIO 01 / BEDROOM 01	10.47 m ²
5 DORMITORIO 02 / BEDROOM 02	9.53 m ²
6 BAÑO 01 / BATHROOM 01	3.22 m ²
7 BAÑO 02 / BATHROOM 02	3.53 m ²
8 ESCALERA / STAIRCASE	1.38 m ²
	65.45 m²
SUPERF. ÚTILES EXTERIORES / USEFUL EXTERIOR AREA	
9 TERRAZA 01 (100%) / TERRACE 01	17.24 m ²
10 SOLARIUM / SOLARIUM	71.10 m ²
	88.34 m²
SUP. ÚTIL TOTAL / TOTAL USEFUL AREA	153.79 m²

SUPERFIC. CONSTRUIDAS / BUILT AREA

SUP. CONST. INTERIOR / INTERIOR BUILT AREA	74.95 m ²
SUP. CONST. EXT. (50%) / EXT. BUILT AREA	1.43 m ²
SUP. CONST. Z/C / BUILT AREA OF SHARED AREAS	10.03 m ²
SUP. CONST. TOTAL / TOT. BUILT AREA	86.41 m²



Las superficies indicadas lo son con carácter meramente informativo, no contractual, y pueden sufrir ligeras variaciones por necesidades técnicas del proceso de construcción.
The indicated areas are for information purposes only, not contractual, and may vary slightly by technical requirements of the construction process.

"OUR EXPERIENCE IS YOUR GUARANTEE"