



REF: # 11825

TORREVIEJA (TORREVIEJA CENTRO)



INFO

PRICE: 176.000 €

PROPERTY TYPE: Apartment

CITY: Torrevieja
(Torrevieja centro)

BEDROOMS: 1

Bathrooms: 1

Build (m2): 51

Plot (m2): -

Terrace (m2): 11

Year:

Floor: -

Old price -



DESCRIPTION

FANTASTIC NEW BUILD RESIDENTIAL APARTMENTS IN TORREVIEJA - only 5 minutes walk from Los Locos beach, in the centre of Torrevieja. This 51m2 ground floor apartment has 1 bedroom, 1 bathroom, private 11m2 terrace with community solarium, heated jacuzzi, chill-out area and sauna. There is an option of an underground parking space at an extra cost of 18.000€. There are other options available including Penthouses. The property benefits from; EQUIPPED BATHROOM WITH SHOWER SCREENS, BUILT-IN WARDROBES AND LINED WITH WOOD, KITCHEN EQUIPPED WITH VITROCERAMIC HOB, DISHWASHER, OVEN AND WASHING MACHINE, PRE-

INSTALLATION FOR AIR CONDITIONING and PRE-INSTALLATION FOR AEROTHERMICS. Torrevieja is a Spanish town known for its Mediterranean climate and coastline in the province of Alicante, on the Costa Blanca with 300 days of sunshine a year and an average temperature of 20°C. It is known for its superb promenade, restaurants, weekly Friday market, Habaneras shopping centre and its wide range of cultural and leisure activities all year round. In the interior, the Lagunas de La Mata-Torrevieja Natural Park has trails and two salty lagoons, one pink and the other green. Only 15 minutes drive is “La Zenia Boulevard” the largest shopping centre in the Alicante region, in addition to the original established Golf courses on the Orihuela Costa Villamartin, Las Ramblas, Real Campoamor and Las Colinas, Torrevieja area is now also well served with excellent courses such as La Finca, La Marquesa, and Vistabella offering different golf experiences with a variety of sea and mountain views. Alicante Airport is 45 minutes / 45kms drive away and Murcia (Corvera) is 55 mins / 68km.



STYLE <ul style="list-style-type: none">• Modern• Contemporary	VIEWS <ul style="list-style-type: none">• Panoramic views	AIRCONDITIONING <ul style="list-style-type: none">• Central airconditioning	DISTANCE TO : <div>Beach : 1 Km</div> <div>Airport: 50 Km</div> <div>Town center : 50 m</div>
FURNITURE <ul style="list-style-type: none">• Not furnished	MAIN LIVING AREA <ul style="list-style-type: none">• Sauna	FLOORING <ul style="list-style-type: none">• Tile floors• Stone floors	KITCHEN <ul style="list-style-type: none">• Open kitchen
GARDEN AND TERRACES <ul style="list-style-type: none">• Covered terrace	EXTRA <ul style="list-style-type: none">• Outdoor jacuzzi• Built in wardrobes• Reinforced door• Double glazed windows		























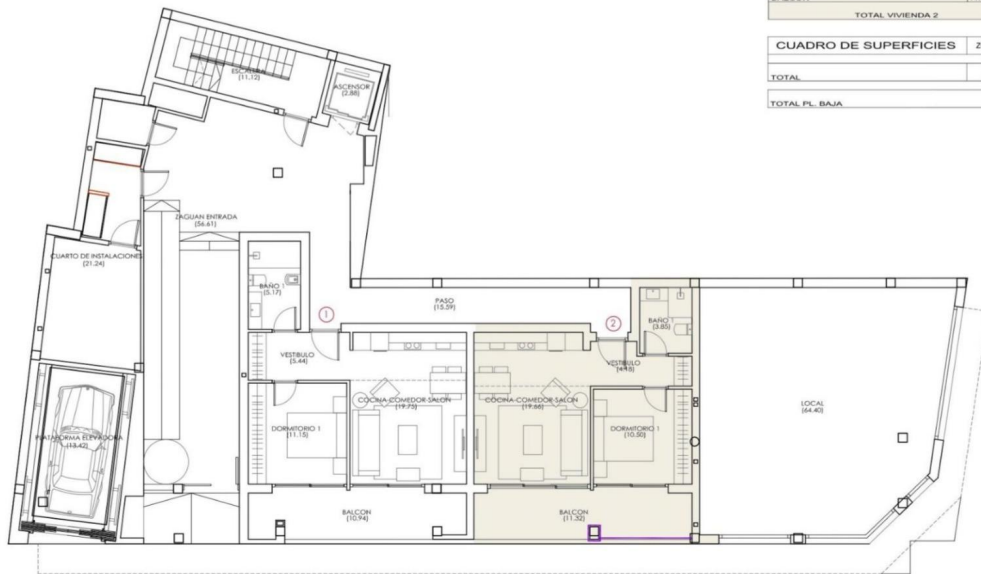




VIVIENDA 2

La vista desde arriba





CUADRO DE SUPERFICIES		N.º VIVIENDA	PLANTA	TIPO
		2	BAJA	6
			ÚTILES	CONSTRUIDAS
VESTIBULO		3.44		
COCINA-COMEDOR-SALON		19.97		44.66
DORMITORIO 1		11.15		
BAÑO 1		5.17		
BALCON		11.32+10.50+5.66+12.54+10.50+6.27		
TOTAL VIVIENDA 2		43.85		50.93

CUADRO DE SUPERFICIES		ZONAS COMUNES PLANTA BAJA	
		ÚTILES	CONSTRUIDAS
TOTAL		120.86	151.83
TOTAL PL. BAJA			330.15

PLANTA BAJA 0



"OUR EXPERIENCE IS YOUR GUARANTEE"