



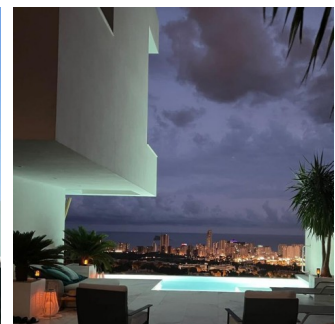
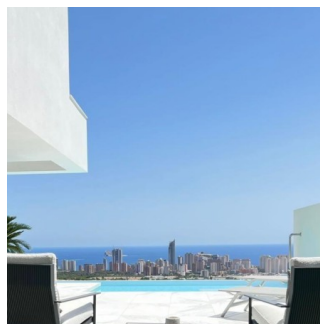
REF: # 11721

FINESTRAT



INFO

PRICE:	1.400.000 €
PROPERTY TYPE:	Villa
CITY:	Finestrat
BEDROOMS:	4
Bathrooms:	3
Build (m2):	260
Plot (m2):	459
Terrace (m2):	-
Year:	-
Floor:	-
Old price	-



DESCRIPTION

NEW BUILD LUXURY VILLA IN FINESTRAT WITH THE SEA VIEWS
New Build Luxury villa in Finestrat with magnificent views of the sea and the Benidorm skyline. Villa distributed in 3 floors, has 4 bedrooms, 3 bathrooms and 1 toilet , a living room and a kitchen integrated in just one spacious room, and outside, you have a plot with more than 400 m2, with beautiful gardens and a big swimming pool where to fully live our mediterranean lifestyle. In the basement there is double garage, and a space where to create your guests house, the play room for the children, or your most personal area of the house. Finestrat located in the Marina Baixa region of the Costa Blanca, close to neighbouring Benidorm and about 40 kilometres from the city of Alicante and the international airport.

Benidorm is just a five-minute drive from the properties and offers all the services you would need including shops, bars, restaurants, supermarkets, banks, pharmacies and several private international schools. Close to the beaches of Levante, Poniente and Cala de Finestrat, with more than 6km in length that are among the best in Europe awarded by the European Union with Blue Flags. All leisure services such as the theme parks of Aqua Natura, Terra Mítica, Terra Natura, Aqualandia and Mundomar, Sierra Cortina and Villaitana Golf courses, hiking and climbing in Puig Campana an incomparable natural setting or enjoy of nautical sports.



VIEWS

- Panoramic views

**GARDEN AND
TERRACES**

- Private garden

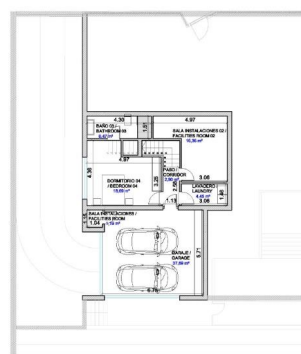
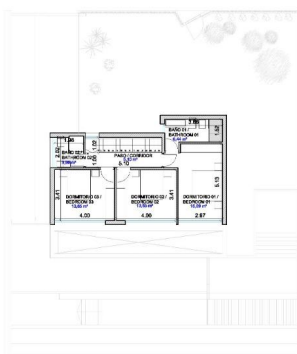
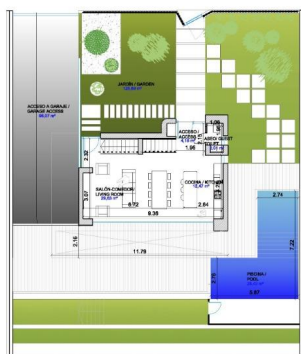








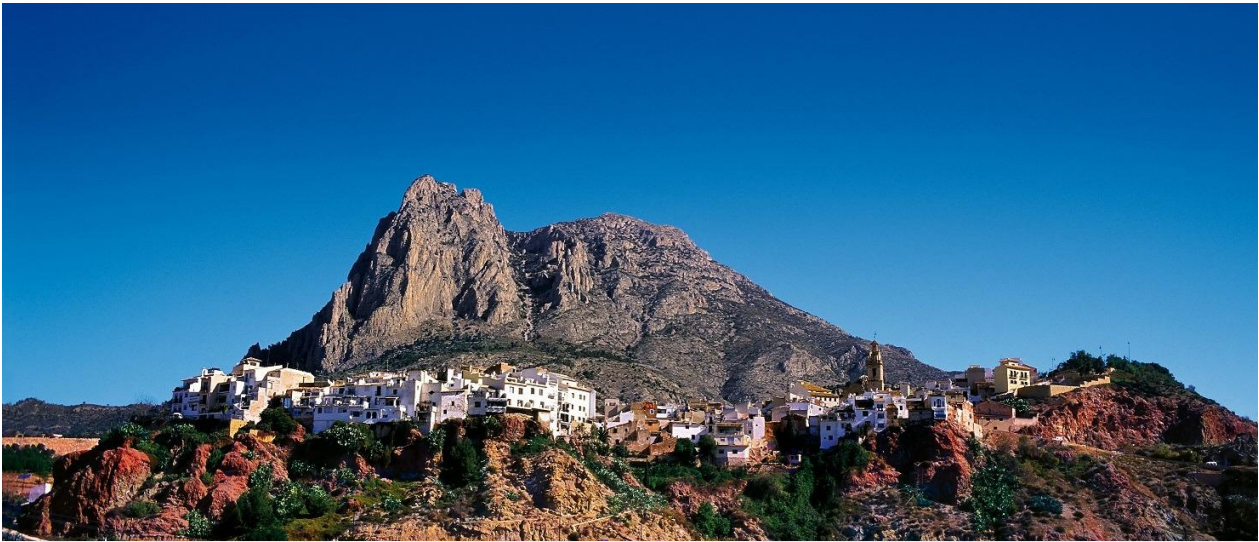




VILLA	4 Dormitorios-Bedrooms	3 Baños-Bathrooms	1 Aseo-Toilets
Superficie Útil Planta Sótano	Live area	Basement Floor	87.75
Superficie Útil Planta Baja + Terraza	Live area	Ground Floor + Terrace	57.43 m²
Superficie Útil • 1ª Planta	Live area	1st Floor	58.92 m²
Total Sup. Útil	Total Live area		204.10 m²
Superficie Construida Planta Sótano	Built area	Basement Floor	110.67 m²
Superficie Construida Planta Baja + Terraza	Built area	Ground Floor + Terrace	74.21 m²
Superficie Construida 1ª Planta	Built area	1st Floor	70.35 m²
Total Sup. Construida	Total Built area		255.23 m²
Garaje	Garage		37.69 m²
Piscina	Pool		29.43 m²
Jardín	Garden		128.69 m²
Superficie Parcela	Plot area		459.17 m²

Nota: Las terrazas están computadas al 50%
Terraces are calculate to 50%







"OUR EXPERIENCE IS YOUR GUARANTEE"