



REF: # 11565

FINESTRAT



#### INFO

**PRICE:** 274.000 €

**PROPERTY TYPE:** Apartment

**CITY:** Finestrat

**BEDROOMS:** 2

**Bathrooms:** 2

**Build ( m2 ):** 71

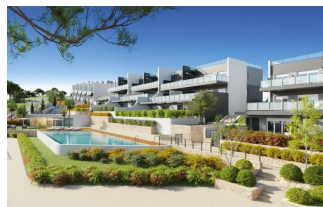
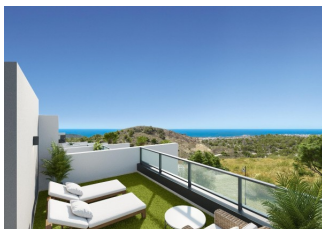
**Plot ( m2 ):** -

**Terrace ( m2 ):** -

**Year:** -

**Floor:** -

**Old price** -



#### DESCRIPTION

**NEW BUILD RESIDENTIAL COMPLEX IN FINESTRAT** New Build residential complex of apartments, penthouses and townhouses in Balcon de Finestrat. Beautiful ground floor apartments with private gardens, middle floor apartments with big terraces and penthouses with private solarium. Properties with 2 and 3 bedrooms, 2 bathrooms, open plan kitchen with the lounge area, fitted wardrobes, Installation of ducted air conditioning (hot/cold). The residential complex consists of community pool for adults with children's pool area and solarium, parking area for bicycles, children's play area tiled with continuous safety paving. All properties has private parking space with pre-installation for electric charging of vehicles. Residential complex perfectly located in a natural enclave of the Costa Blanca and offers incredible views of the Benidorm skyline, Finestrat cove and El Puig Campana. Benidorm is just a five-minute drive from the properties and offers all the services you would need including shops, bars, restaurants, supermarkets, banks, pharmacies and several private international schools. Close to the beaches of Levante, Poniente and Cala de Finestrat, with more than 6km in length that are among the best in Europe awarded by the European

Union with Blue Flags. All leisure services such as the theme parks of Aqua Natura, Terra Mítica, Terra Natura, Aqualandia and Mundomar, Sierra Cortina and Villaitana Golf courses, hiking and climbing in Puig Campana an incomparable natural setting or enjoy of nautical sports. Distance to the sea 4 km, to the airport 26 km and to the golf 1km. Complex located 40 minutes from Alicante airport.



## VIEWS

- Panoramic views















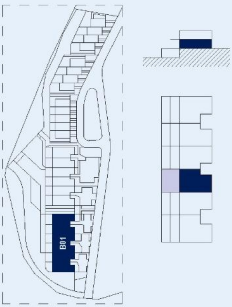


Vivienda N° 3

SUP. ÚTIL TOTAL 108.01 m²  
SUP. CONST. TOTAL 119.51 m²

Nº	ESTANCIA	S.U. INT	S.C. INT
1	SALÓN-COMEDOR-COCINA	27.75 m²	31.95 m²
2	DORMITORIO 1	12.09 m²	13.92 m²
3	DORMITORIO 2	10.00 m²	11.52 m²
4	BAÑO 1	4.16 m²	4.79 m²
5	BAÑO 2	3.68 m²	4.24 m²
6	ACCESO	2.30 m²	2.65 m²
7	DISTRIBUIDOR	62.50 m²	71.97 m²

Nº	ESTANCIA	S.U. EXT	S.C. EXT
8	TERRAZA DESCUBIERTA	23.31 m²	24.90 m²
9	TERRAZA CUBIERTA	22.20 m²	22.64 m²
		45.51 m²	47.54 m²



BLOQUE 01





***"OUR EXPERIENCE IS YOUR GUARANTEE"***