



REF: # 11465

LOS MONTESINOS



#### INFO

PRICE: 529.000 €

PROPERTY TYPE: Villa

CITY: Los Montesinos

BEDROOMS: 3

Bathrooms: 3

Build ( m2 ): 108

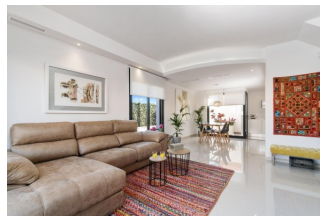
Plot ( m2 ): 405

Terrace ( m2 ): 54

Year: -

Floor: -

Old price -



#### DESCRIPTION

**NEW BUILD VILLAS IN LOS MONTESINOS** New construction project located in La Herrada (Los Montesinos), in a privileged location close to the best beaches of Guardamar and with all the amenities offered by a large municipality such as Los Montesinos. This project has 32 villas, some semi-detached on 2 floors and others independent on a single floor, which are delivered with the best equipment, including solarium, bath screens, garden finished with artificial grass of the best quality, decorative gardening elements, and pre-installation for solar panels, electrical socket and door motor for vehicles. Villa has 3 bedrooms, 3 bathrooms, open plan kitchen with lounge, fitted wardrobes, terrace. The typical village of Los Montesinos is strategically located 10 minutes drive from the beaches and leisure of Torrevieja (with all the services of a big city: theatre, 2 hospitals, international schools, etc.), several golf courses and with easy access to the A7 motorway to reach Alicante airport in 20 minutes. In the urbanization there are supermarkets and bars for the daily service, being a rural and quiet environment. The climate of this area guarantees 300 days of sunshine a year with an average

temperature of 20°C, which together with the rich gastronomy and the cultural and sporting offer of its surroundings, make this area an ideal place to establish a second holiday home or a quiet place to live permanently.



**VIEWS**

- Panoramic views

**AIRCONDITIONING**

- Central airconditioning

**PARKING**

Parking no Cars: 1

---

**GARDEN AND  
TERRACES**

- Fenced
- Private garden

## PROPERTY GALLERY























PLANTA BAJA

## VIVIENDA UNIFAMILIAR AISLADA

**PARCELAS 33-34-35-36**

Superficie Construida Planta Baja	100.15 m²
Superficie Terraza Semicubierta (50%)	8.80 m²
Superficie Construida TOTAL	108.95 m²



DIN A4 (1/125)

LAS IMÁGENES SE REFIEREN A SOLUCIONES APROXIMADAS Y NO SON VINCULANTES AL PROYECTO FINAL



PLANTA BAJA

## VIVIENDA UNIFAMILIAR AISLADA

**PARCELAS 33-34-35-36**

Superficie Construida Planta Baja	100.15 m²
Superficie Terraza Semicubierta (50%)	8.80 m²
Superficie Solarium (100%)	37.50 m²
Superficie Construida TOTAL	108.95 m²



DIN A4 (1/125)

LAS IMÁGENES SE REFIEREN A SOLUCIONES APROXIMADAS Y NO SON VINCULANTES AL PROYECTO FINAL











***"OUR EXPERIENCE IS YOUR GUARANTEE"***