



REF: # 11375

TORREVIEJA (TORREVIEJA CENTRO)



INFO

PRICE: 195.000 €

PROPERTY TYPE:

CITY: Torrevieja (Torrevieja centro)

BEDROOMS: 1

Bathrooms: 1

Build (m2): 66

Plot (m2): -

Terrace (m2): -

Year: -

Floor: -

Old price -



DESCRIPTION

NEW BUILD PENTHOUSE APARTMENTS IN TORREVIEJA. New Build residential of 12 exclusive 1 and 2 bedrooms, 1 and 2 bathrooms apartments and penthouses, with open plan kitchen and living area, large, fitted wardrobes, fully equipped bathrooms with underfloor heating. All motorised aluminium blinds. Armoured entrance door with security lock. Pre-installation of air conditioning and heating. New Build residential complex with modern design and high quality finishes has a beautiful communal solarium. Torrevieja is a Spanish town in the

province of Alicante, on the Costa Blanca. It is known for its typically Mediterranean climate and coastline. It has boardwalks with resorts along its sandy beaches. The small Museum of the Sea and Salt houses exhibitions on the fishing and salt history of the city. In the interior, the Lagunas de La Mata-Torrevieja Natural Park has trails and two salty lagoons, one pink and the other green. Alicante airport located 40 minutes away and Murcia airport about 1 hour away



VIEWS

- Panoramic views









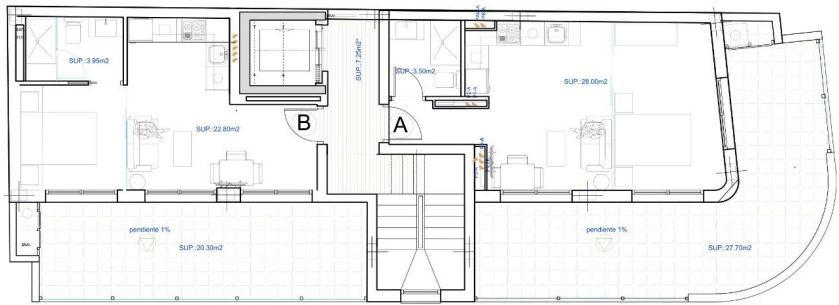






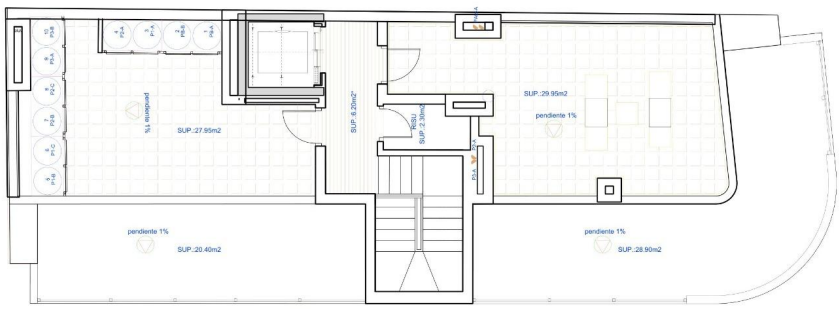
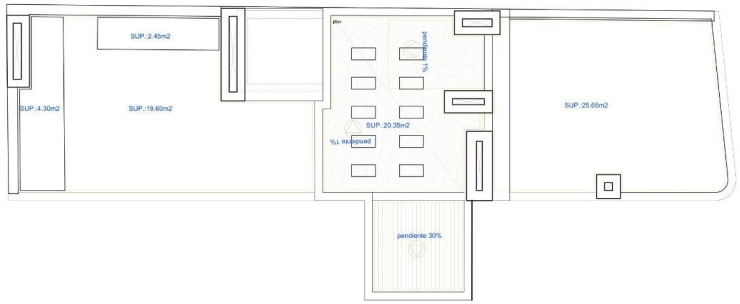


CUADRO DE SUPERFICIES		
SUPERFICIE VIVIENDA TIPO (ATICO)		
	VIV-A	VIV-B
SALON COMEDOR COCINA DORMITORIO	28,00 m ²	23,00 m ²
DORMITORIO-1	0,00 m ²	0,00 m ²
DORMITORIO-2	0,00 m ²	0,00 m ²
BAÑO-1	3,50 m ²	3,95 m ²
BAÑO-2	0,00 m ²	0,00 m ²
TERRAZA-1 AL 100%	28,90 m ²	20,30 m ²
TERRAZA-2 AL 100%	29,95 m ²	0,00 m ²
SUP. ÚTIL VIVIENDA	90,35 m ²	47,25 m ²
SUP. CONSTR. VIVIENDA (INCLUIDAS TERRAZAS AL 100%)	106,30 m ²	56,05 m ²
SUP. CONSTRUIDA COMUNES	17,85 m ²	10,87 m ²
SUPERFICIE CONSTRUIDA TOTAL	124,15 m ²	66,92 m ²



A3-42-M0015-15

PLANTA TORREON



A3-42-M0015-15











"OUR EXPERIENCE IS YOUR GUARANTEE"