



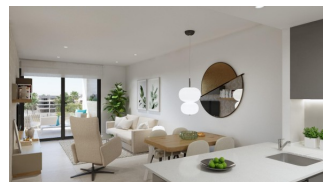
REF: # 11345

ORIHUELA COSTA (PLAYA FLAMENCA)



INFO

PRICE:	300.000 €
PROPERTY TYPE:	Apartment
CITY:	Orihuela Costa (Playa Flamenca)
BEDROOMS:	2
Bathrooms:	1
Build (m2):	76
Plot (m2):	-
Terrace (m2):	19
Year:	-
Floor:	-
Old price	-



DESCRIPTION

NEW BUILD RESIDENTIAL COMPLEX APARTMENTS IN PLAYA FLAMENCA - only 600m from the beach! Beautiful apartments by the sea in a residential complex with large common areas including parks, swimming pools, gym, sauna and pedestrian paths. This 76m2 apartment consists of 2 bedrooms, 1 bathrooms and has air conditioning through ducts, underfloor heating in the bathrooms and a parking space included in the price. This Residential enjoys an exceptional situation next to Flamenca beach, shopping centres and an excellent connection with the AP-7 highway. The opportunity to live near the sea in an idyllic setting, designed to offer a sustainable and healthy lifestyle, which exudes open spaces, green areas and architectural harmony. Its design includes facades with planters, large flowerpots, stone porticoes that complete a scenic route full of native flora in which there is no lack of a lake, fountains, a swimming pool with an integrated chill out lounge area, jacuzzis, and an aquatic children's play area. A glass-enclosed gym with panoramic views over the lake, an exercise room and a Finnish sauna complete the extensive list of amenities. Playa Flamenca is a quiet

beach-side residential urbanization, located 40 minutes drive from Alicante airport and 15 minutes drive from the bustling town of Torrevieja, the complex is only 350m from the largest shopping centre in the region of Alicante!



STYLE <ul style="list-style-type: none">• Modern• Contemporary	VIEWS <ul style="list-style-type: none">• Panoramic views	AIRCONDITIONING <ul style="list-style-type: none">• Central airconditioning	DISTANCE TO : <div>Beach : 500 m</div> <div>Airport: 70 Km</div> <div>Town center : 5 Km</div>
FURNITURE <ul style="list-style-type: none">• Not furnished	PARKING <div>Parking no Cars: 1</div>	FLOORING <ul style="list-style-type: none">• Tile floors• Stone floors	KITCHEN <ul style="list-style-type: none">• Open kitchen
GARDEN AND TERRACES <ul style="list-style-type: none">• Covered terrace• Landscaped• Fenced• Stone walls• Electric gate• Private garden• Communal Garden	EXTRA <ul style="list-style-type: none">• Built in wardrobes• Alarm• Reinforced door• Double glazed windows		

PROPERTY GALLERY







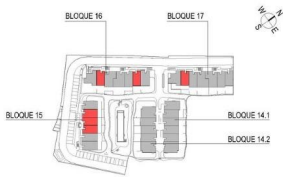






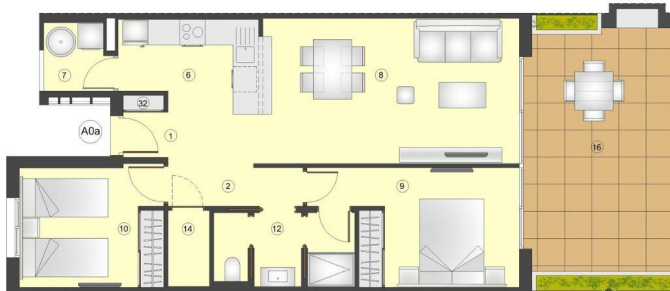


NOTA: El Porche y jardineras pueden variar en función de la ubicación de la vivienda. Ver Planos de Planta.
NOTA: The Porch and Jardineras may vary depending on the location of the house. See top view plans.
NOTA: Le Porche et jardinières peuvent varier en fonction de l'emplacement du logement. Voir plans d'étage.



	A0b	A0c	A0d
VARIEDAD DE TIPOS POR TERRAZAS			
TOTAL SUP. ÚTILES	64.79 m2	64.79 m2	64.79 m2
SUP. CONSTRUIDA INTERIOR	75.94 m2	75.94 m2	75.94 m2
14 SUP. CONSTRUIDA PORCHE	19.05 m2	18.83 m2	19.24 m2
22 SUP. CONSTRUIDA TERRAZA DISCUBERTA	2.44 m2	2.42 m2	2.44 m2
TOTAL SUP. CONSTRUIDA PRIVADA	97.45 m2	97.41 m2	97.58 m2

Nº	SUPERFICIES ÚTILES / FLOOR AREA / SURFACES UTILES	TIPO / TYPE
1	VESTIBULO / HALL / ENTREE	2.88 m2
2	PASO 1 / CORRIDOR 1 / CIRCULATION 1	3.94 m2
6	COCINA / KITCHEN / CUISINE	6.84 m2
7	GALERIA / GALLERY / GALLERIE	2.48 m2
8	SALÓN COMEDOR / LIVING-DINING ROOM / SALON-SALLE A MANGER	21.21 m2
9	DORMITORIO 1 / BEDROOM 1 / CHAMBRE 1	11.53 m2
10	DORMITORIO 2 / BEDROOM 2 / CHAMBRE 2	9.48 m2
11	BANO 1 / BATHROOM 1 / SALLE DE BAINS 1	5.31 m2
14	TRASTERO / STOREROOM / CLOSET	1.23 m2
22	ZAFATERO / BRIDE LOCKER / PLACARD A CHAUSSURES	6.38 m2
TOTAL SUP. ÚTILES / TOTAL FLOOR AREA / TOTAL SURFACES UTILES		64.79 m2
SUP. CONSTRUIDA INTERIOR / BUILT INTERIOR AREA / SURFACE CONSTRUITE INTERIEUR		75.94 m2
14 SUP. CONSTRUIDA PORCHE / BUILT PORCH AREA / SURFACE CONSTRUITE PORCHE		21.83 m2
TOTAL SUP. CONSTRUIDA PRIVADA / TOTAL BUILT PRIVATE AREA / TOTAL SURFACE CONSTRUITE PRIVATIVE		97.88 m2
SUP. JARDIN desde terraza / GARDEN AREA from terrace / SURF. JARDIN de -- à		11.23 m2



TIPO/TYPE A0a

Apartamento, 2 Dormitorios + 1 Baño - Planta Baja
Appartement, 2 Bedrooms + 1 Bathroom - Ground Floor
Appartement, 2 Chambres + 1 Salle de bains - Rez-de-chaussée

0 1 m 3 m 5 m

Enero/January/Janvier 2023

Plano sujeto a posibles modificaciones por razones o exigencias de índole técnica o jurídica. Las superficies son aproximadas. Cocina y amueblamiento orientados, sin valor contractual.
Plans subject to possible modifications for technical or legal reasons. Measurements shown are approximate. Kitchen and furnishings are for display purpose only, with no contractual value.
Plans soumis à modifications en fonction des besoins ou exigences d'ordre technique ou juridique. Les surfaces sont approximatives. Cuisine et aménagement indicatifs, sans valeur contractuelle.





"OUR EXPERIENCE IS YOUR GUARANTEE"