



REF: # 10624

BENITACHELL



INFO

PRICE: 458.000 €

PROPERTY TYPE: Apartment

CITY: Benitachell

BEDROOMS: 2

Bathrooms: 3

Build (m2): 108

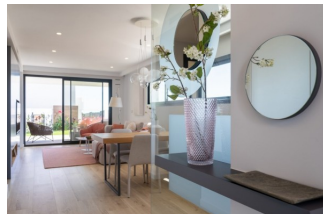
Plot (m2): 115

Terrace (m2): -

Year: -

Floor: -

Old price -



DESCRIPTION

NEW BUILD APARTMENTS IN CUMBRE DEL SOL New Built apartments with a modern architecture, with 2 bedrooms and 2 bathrooms, kitchen open to the living room, with various models to choose from, terrace and garden on the ground floor apartments, and solarium on the top floor, all distributed to make the most of the space, taking advantage of the Mediterranean light and offering a plus of comfort in your day to day. The equipment in the apartments are also oriented to comfort with under-floor heating, hot and cold air conditioning by conduits with thermostat in the living room, hot water by Altherma system, electrical appliances are included and a project of decoration to give them style and warmth. The communal areas are designed for relax and enjoy as a family, with pool surrounded by large terraces to enjoy the sun, playground for kids, social club, gardens and parking areas. Within a short distance to Cala del Llebeig, the urban core of Moraira and all the services that Residential Resort Cumbre del Sol is equipped with. Residential is surrounded by an exceptional environment, in which they highlight beautiful views over the Mediterranean sea, an ideal promotion to enjoy free time with family in the communal areas with

various pools, large terraces for sunbathing, social club, playgrounds for kids, also because for its location is allows us to make several hiking tours like the one that takes us to Cala Llebeig, a unique enclave on the Costa Blanca. You can also take advantage of all the services that is included in the Residential Resort Cumbre del Sol, commercial area, supermarket, hairdresser, pharmacy, bars and restaurants, padel- and tennis courts, hiking tracks, international school Lady Elizabeth School, hipico center, beach and coves with beach bars, within a short distance there is first class restaurants recognized with Michelin stars, Golf Clubs, Nautical Clubs, all the services that you need to live and enjoy all year around. Alicante airport located 1hour drive away.



VIEWS

- Panoramic views

**GARDEN AND
TERRACES**

- Open terrace
- Private garden

HEATING

- Central gas heating

EXTRA

- Reinforced door























"OUR EXPERIENCE IS YOUR GUARANTEE"