



REF: # 10623

BENITACHELL



INFO

PRICE: 434.000 €

PROPERTY TYPE: Apartment

CITY: Benitachell

BEDROOMS: 2

Bathrooms: 2

Build (m2): 88

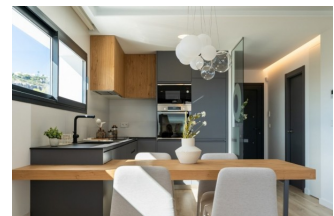
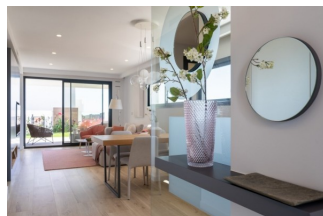
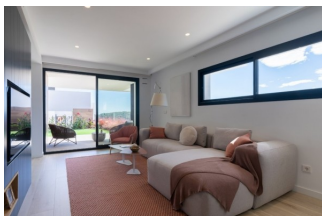
Plot (m2): -

Terrace (m2): -

Year: -

Floor: -

Old price -



DESCRIPTION

NEW BUILD RESIDENTIAL IN CUMBRE DEL SOL New Built modern apartments with 2 bedrooms and 2 bathrooms, kitchen open to the living room, with various models to choose from: terrace and garden on the ground floor apartments, solarium on the top floor. All properties distributed to make the most of the space, taking advantage of the Mediterranean light and offering a plus of comfort in your day to day. The equipment in the apartments are also oriented to comfort with under-floor heating, hot and cold air conditioning by conduits with thermostat in the living room, hot water by Altherma system, electrical appliances are included and a project of decoration to give them style and warmth. The communal areas are designed for relax and enjoy as a family, with pool surrounded by large terraces to enjoy the sun, playground for kids, social club, gardens and parking areas. Within a short distance to Cala del Llebeig, the urban core of Moraira and all the services that Residential Resort Cumbre del Sol is equipped with. At the most easterly point of the province of Alicante, Spain, lies the Residential Resort Cumbre del Sol. Residents and guests are the first to greet the majestic sun each morning as it rises over the calm waters of the Mediterranean

Sea. From our exclusive viewpoint, on the highest point of the municipality of Benitachell, Cumbre del Sol offers panoramic views over the sea and the natural parks that surround us from Jávea to Moraira. Discover exclusive resort on the Costa Blanca and discover our wonderful first-class flats and villas, incredible sports and leisure facilities and complete range of services for those fortunate enough to make Cumbre del Sol their home. Benitachell located 65 minutes from Alicante airport and 1,5 hour Valencia airport.



VIEWS

- Panoramic views

**GARDEN AND
TERRACES**

- Open terrace

EXTRA

- Reinforced door

























"OUR EXPERIENCE IS YOUR GUARANTEE"