



REF: # 10457

ORIHUELA COSTA



#### INFO

PRICE:	229.500 €
PROPERTY TYPE:	Townhouse
CITY:	Orihuela Costa
BEDROOMS:	2
Bathrooms:	2
Build ( m2 ):	90
Plot ( m2 ):	49
Terrace ( m2 ):	-
Year:	-
Floor:	-
Old price	-



#### DESCRIPTION

BEAUTIFUL NEW BUILD TOWNHOUSES IN PILAR DE LA HORADADA New Build residential offers you 26 townhouses with 2 and 3 bedrooms in Pilar de la Horadada close to all amenities. Townhouses designed to make your dreams come true. Exclusive homes with large terraces and gardens. An options for a private pool at an extra cost. Excellent location, 5 minutes from the sandy beaches and most prestigious 18-hole Lo Romero golf course. Pilar de la Horadada is a typical Spanish village in the most southern part of the Costa Blanca. The large main street has supermarkets, lots of shops, restaurants and bars and some lovely squares. The beautiful beaches of Torre de la Horadada and Mil Palmeras with fine sand promenade is just 5 minutes away. The airports of Corvera (Murcia) and Alicante are respectively 40 and 55 minutes away.

#### ENERGETIC CERTIFIED



<b>STYLE</b> <ul style="list-style-type: none"><li>• Modern</li><li>• Contemporary</li></ul>	<b>VIEWS</b> <ul style="list-style-type: none"><li>• Panoramic views</li></ul>	<b>AIRCONDITIONING</b> <ul style="list-style-type: none"><li>• Central airconditioning</li></ul>	<b>DISTANCE TO :</b> <div>Beach : 4 Km</div> <div>Airport: 50 Km</div>
<b>ORIENTATION</b> <div>South west</div>	<b>PARKING</b> <div>Parking no Cars: 1</div>	<b>MAIN LIVING AREA</b> <ul style="list-style-type: none"><li>• Storage</li><li>• Bathroom en-suite</li></ul>	<b>FLOORING</b> <ul style="list-style-type: none"><li>• Tile floors</li></ul>
<b>KITCHEN</b> <ul style="list-style-type: none"><li>• Open kitchen</li><li>• Equipped kitchen</li><li>• Granite countertop</li></ul>	<b>GARDEN AND TERRACES</b> <ul style="list-style-type: none"><li>• Open terrace</li><li>• Automatic watering system</li><li>• Fenced</li><li>• Stone walls</li><li>• Private garden</li></ul>	<b>EXTRA</b> <ul style="list-style-type: none"><li>• Built in wardrobes</li><li>• Reinforced door</li><li>• Double glazed windows</li><li>• Storage room</li></ul>	

















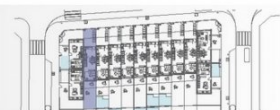




PISCINA OPCIONAL

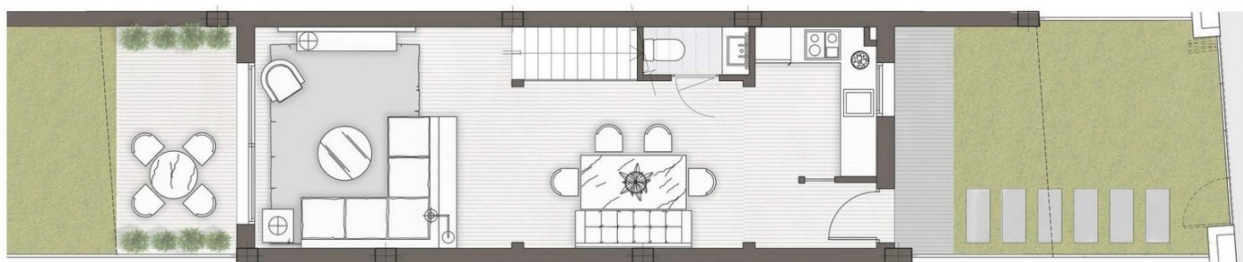


VIVIENDA TIPO 1A - N° 03  
PISCINA OPCIONAL



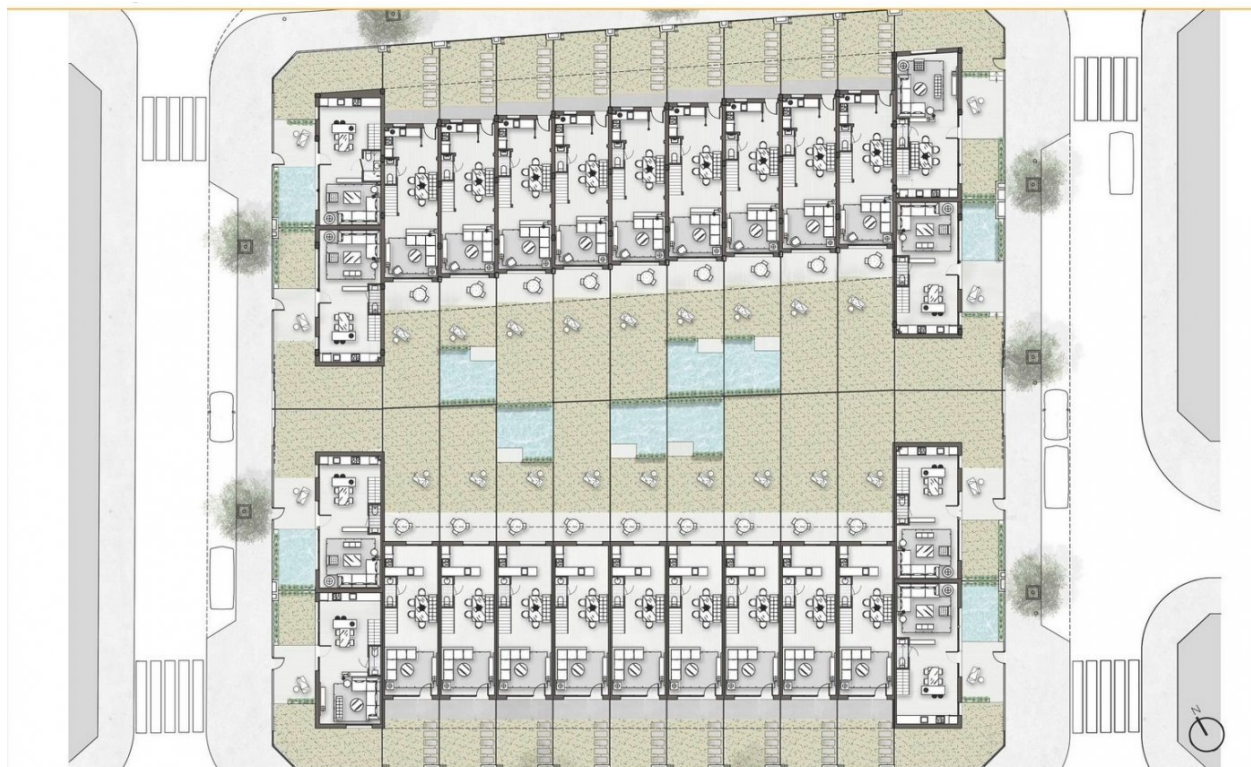
\* Estas imágenes no tienen valor contractual y podrán experimentar variaciones por exigencias técnicas, legales, administrativas sin que ello implique menoscabo del nivel de calidades. Piscina opcional, no está incluida en el precio.





VIVIENDA TIPO 1A - N° 03	
SUPERFICIES CONSTRUIDAS (INCLUIDO PORCHE CUBIERTO)	90,04 m <sup>2</sup>
TERRAZA PLANTA P1	18,35 m <sup>2</sup>
JARDINES	38,00 m <sup>2</sup>
<b>TOTAL</b>	<b>144,39m<sup>2</sup></b>

\* Estas imágenes no tienen valor contractual y podrán experimentar variaciones por exigencias técnicas, legales, administrativas sin que ello implique menoscabo del nivel de calidades. Piscina opcional, no está incluida en el precio.



**"OUR EXPERIENCE IS YOUR GUARANTEE"**