



REF: # 10447

ORIHUELA COSTA



INFO

PRICE: 1.150.000 €

PROPERTY TYPE: Villa

CITY: Orihuela Costa

BEDROOMS: 3

Bathrooms: 3

Build (m2): 300

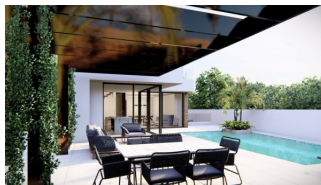
Plot (m2): 590

Terrace (m2): -

Year: -

Floor: -

Old price -



DESCRIPTION

NEW BUILD VILLA IN LA ZENIA, ORIHUELA COSTA New Build Luxury villa located at walking distance from the beach of La Zenia, Orihuela Costa. Independent villa build on the plot 590m2 and has a garden with private pool and parking space. Villa is fully equipped with an underbuild. Villas has 3 bedrooms, 2 bathrooms, open plan kitchen with spacious living room, fitted wardrobes, terrace. La Zenia is located on the Costa Blanca South just south of the major town of Torrevieja. This stretch of the coast is known as the Orihuela Costa. La Zenia is a small but busy beach tourist resort. It has many restaurants, bars, shops and good facilities due to the large number of people who live here all the year round. There are many Irish bars including the well-known Paddy's. Most bars show Sky Sports and it is easy to find a good all-day English breakfast in one of the many cafes and restaurants. Complex located 40 minutes from Alicante airport and 1 hour Murcia - Corvera airport.

ENERGETIC CERTIFIED



STYLE <ul style="list-style-type: none">• Modern• Contemporary	VIEWS <ul style="list-style-type: none">• Panoramic views	AIRCONDITIONING <ul style="list-style-type: none">• Central airconditioning	DISTANCE TO : <div>Beach : 200 m</div> <div>Airport: 50 Km</div> <div>Town center : 500 m</div>
ORIENTATION <div>South west</div>	PARKING <div>Parking no Cars: 2</div>	MAIN LIVING AREA <ul style="list-style-type: none">• Storage• Bathroom en-suite	FLOORING <ul style="list-style-type: none">• Tile floors
KITCHEN <ul style="list-style-type: none">• Open kitchen• Equipped kitchen• Granite countertop	GARDEN AND TERRACES <ul style="list-style-type: none">• Covered terrace• Open terrace• Exterior lights• Automatic watering system• Palm trees• Fenced• Stone walls• Private garden	EXTRA <ul style="list-style-type: none">• Built in wardrobes• Alarm• Reinforced door• Double glazed windows• Satellite TV• Storage room	

PROPERTY GALLERY







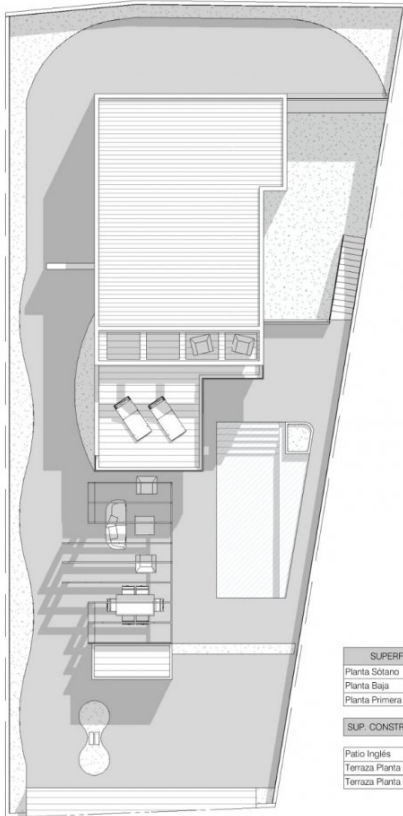




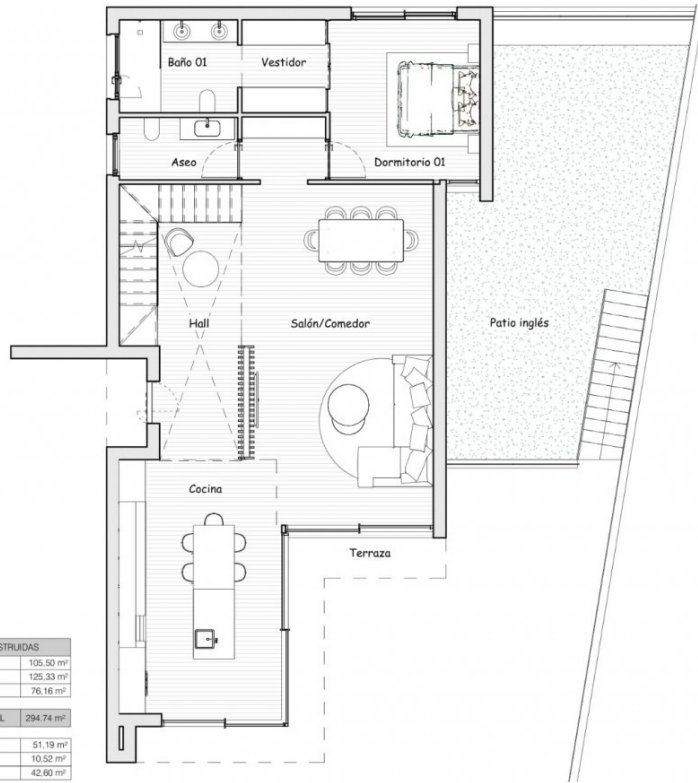




PARCELA

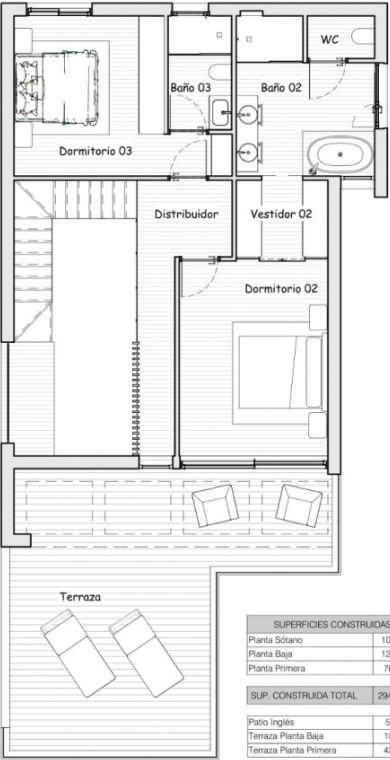


PLANTA BAJA



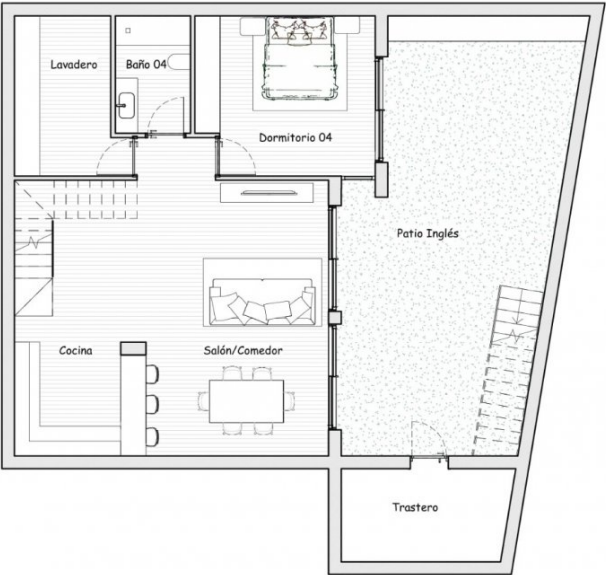
SUPERFICIES CONSTRUIDAS	
Planta sótano	106,30 m ²
Planta Baja	125,33 m ²
Planta Primera	76,16 m ²
SUP. CONSTRUIDA TOTAL	294,74 m²
Patio Inglés	51,19 m ²
Terraza Planta Baja	10,52 m ²
Terraza Planta Primera	42,80 m ²

PLANTA PRIMERA



SUPERFICIES CONSTRUIDAS	
Planta Sótano	105,50 m ²
Planta Baja	125,33 m ²
Planta Primera	76,16 m ²
SUP. CONSTRUIDA TOTAL	
294,74 m ²	
Patio Inglés	51,19 m ²
Terraza Planta Baja	10,52 m ²
Terraza Planta Primera	42,60 m ²

PLANTA SÓTANO





"OUR EXPERIENCE IS YOUR GUARANTEE"