



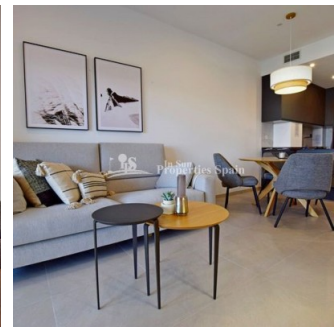
REF: # 10379

TORREVIEJA (LA MATA)



#### INFO

|                 |                      |
|-----------------|----------------------|
| PRICE:          | 252.800 €            |
| PROPERTY TYPE:  | Apartment            |
| CITY:           | Torrevieja (La mata) |
| BEDROOMS:       | 2                    |
| Bathrooms:      | 2                    |
| Build ( m2 ):   | 78                   |
| Plot ( m2 ):    | -                    |
| Terrace ( m2 ): | 17                   |
| Year:           |                      |
| Floor:          | 1                    |
| Old price       | -                    |



#### DESCRIPTION

NEW BUILD WONDERFUL APARTMENT, GATED URBANIZATION IN TORREVIEJA - ONLY 700M FROM THE BEACH. This modern 78m2 apartment consists of 2 bedrooms, 2 bathrooms, open plan kitchen / dining area, large private terraces of 17m2 with with sea views and front terraces facing the communal areas!! The communal areas have many facilities including two swimming pools for adults, children's pool, children's area, gym, sports area, spa, bicycle parking and vehicle parking area. These apartments have quality finishes and materials and are in front of of Torremarina Shopping Center which has a Mercadona supermarket with many restaurants, cafes and shops. It is only 700 meters to La Mata Beach, 10 minutes walking. Torrevieja is a Spanish town in the province of Alicante, on the Costa Blanca. It is known for its typically Mediterranean climate and coastline. It has boardwalks with resorts along its sandy beaches. The small Museum of the Sea and Salt

houses exhibitions on the fishing and salt history of the city. In the interior, the Lagunas de La Mata-Torre Vieja Natural Park has trails and two salty lagoons, one pink and the other green. Alicante airport located 40 minutes away and Murcia airport about 1 hour away.



|   |  |   |   |
|---|--|---|---|
| <b>STYLE</b> <ul style="list-style-type: none"><li>• Modern</li></ul>   | <b>VIEWS</b> <ul style="list-style-type: none"><li>• Panoramic views</li><li>• Sea views</li></ul> | <b>AIRCONDITIONING</b> <ul style="list-style-type: none"><li>• Central airconditioning</li></ul>  | <b>DISTANCE TO :</b> <div>Beach : 500 m</div> <div>Airport: 40 Km</div> <div>Town center : 7 Km</div> |
| <b>PARKING</b> <div>Parking no Cars: 1</div>  | <b>MAIN LIVING AREA</b> <ul style="list-style-type: none"><li>• Gym</li></ul>                      | <b>FLOORING</b> <ul style="list-style-type: none"><li>• Tile floors</li><li>• Stone floors</li></ul>  | <b>KITCHEN</b> <ul style="list-style-type: none"><li>• Open kitchen</li></ul>                         |
| <b>GARDEN AND TERRACES</b> <ul style="list-style-type: none"><li>• Open terrace</li><li>• Play Ground</li><li>• Landscaped</li><li>• Fenced</li><li>• Stone walls</li><li>• Electric gate</li><li>• Communal Garden</li></ul> | <b>HEATING</b> <ul style="list-style-type: none"><li>• Central gas heating</li></ul>               | <b>EXTRA</b> <ul style="list-style-type: none"><li>• Built in wardrobes</li><li>• Reinforced door</li><li>• Double glazed windows</li></ul> |   |















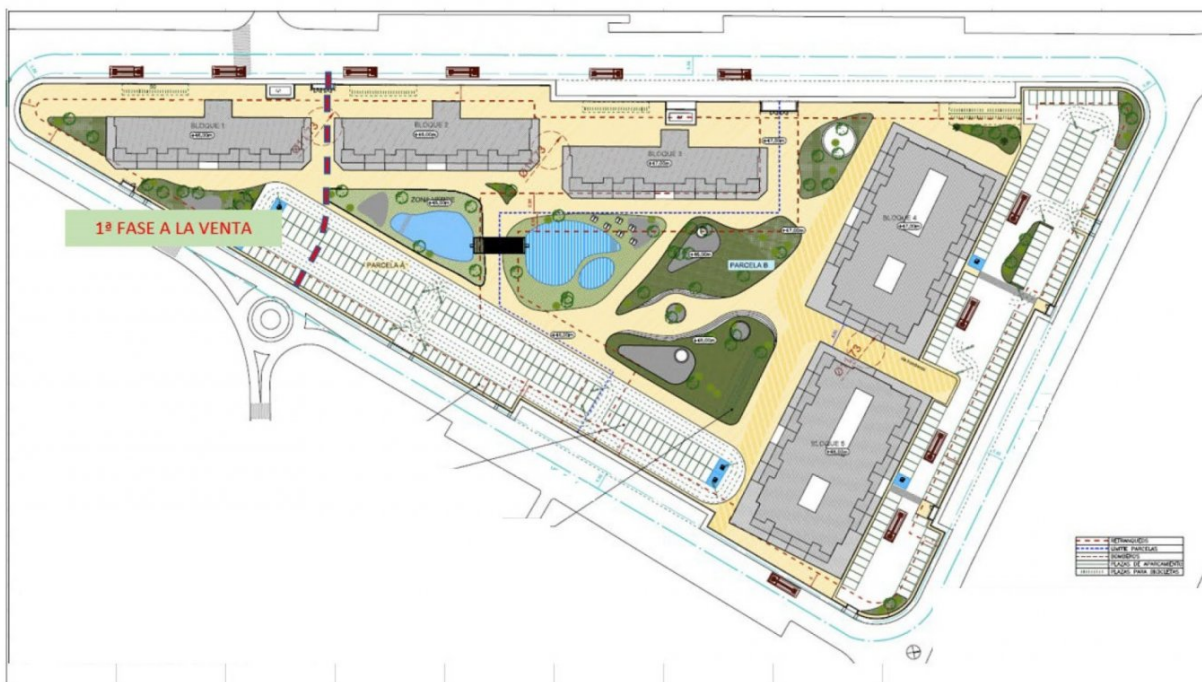




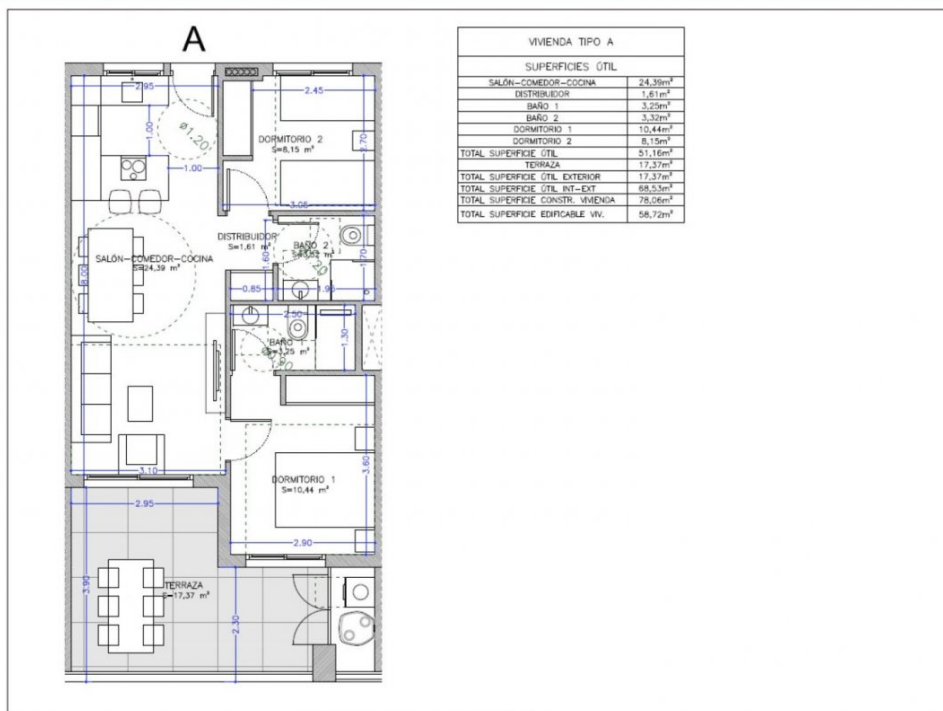






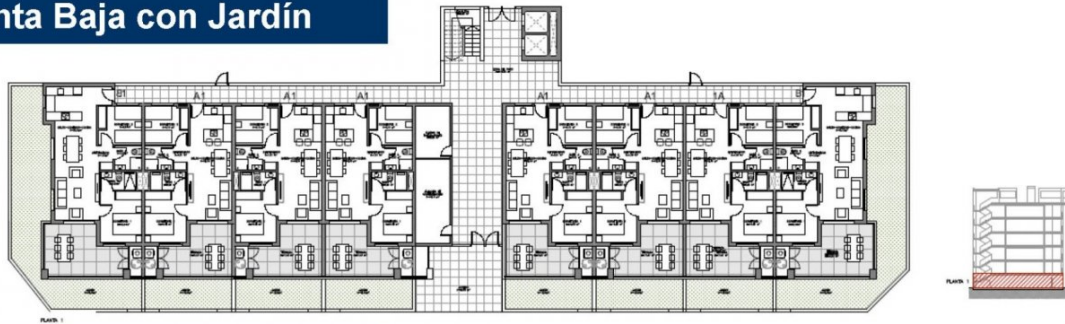


## Bloque 1 – Tipologías (Mod. A de 2 Dorm y 2 Baños)

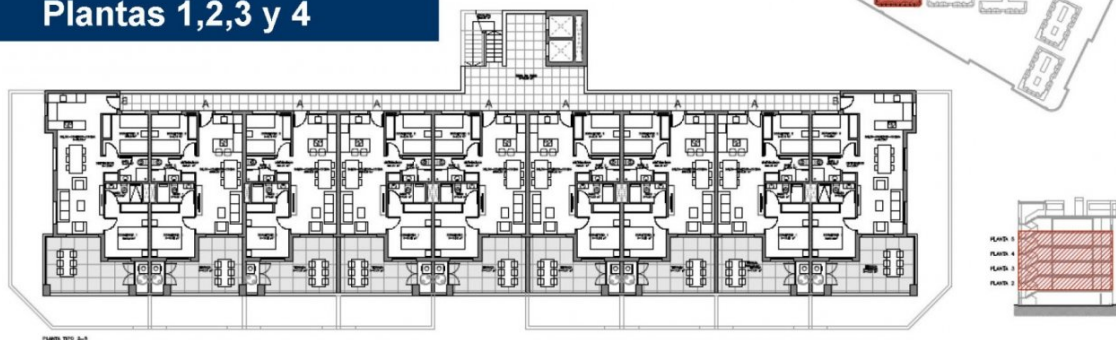


## Bloque 1 – Plantas

### Planta Baja con Jardín



### Plantas 1,2,3 y 4







***"OUR EXPERIENCE IS YOUR GUARANTEE"***