



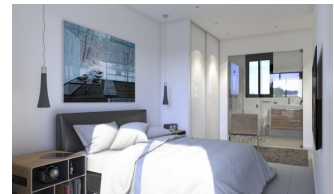
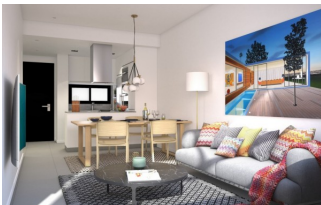
REF: # 10316

ORIHUELA COSTA (VILLAMARTIN AREA)



#### INFO

PRICE:	255.000 €
PROPERTY TYPE:	Apartment
CITY:	Orihuela Costa (Villamartin Area)
BEDROOMS:	2
Bathrooms:	2
Build ( m2 ):	72
Plot ( m2 ):	38
Terrace ( m2 ):	13
Year:	
Floor:	-
Old price	-



#### DESCRIPTION

MAGNIFICENT APARTMENT, GROUND FLOOR, IN VILLAMARTIN with private garden and communal pool. This 72m2 ground floor apartment consists of 2 bedrooms, 2 bathrooms, a 13m2 terrace and a 38m2 private garden. The property is very well oriented, receiving light and heat from the sun throughout the year. Within the lovely common areas is a large swimming pool and jacuzzi, large garden areas with a playground and an exercise area. The apartment is located close to all amenities and is surrounded by the most well known golf clubs in the area, Villamartin Golf, Las Ramblas, Las Colinas and Campoamor. The Orihuela Costa has many beautiful beaches, and only a 5 minutes drive away you will find Zenia Boulevard shopping Mall, the largest shopping mall in Alicante province. The nearest airports are Alicante and Murcia which are only 45 minutes drive away.

#### ENERGETIC CERTIFIED



<b>STYLE</b>	<b>VIEWS</b>	<b>AIRCONDITIONING</b>	<b>DISTANCE TO :</b>
<ul style="list-style-type: none"><li>• Modern</li></ul>	<ul style="list-style-type: none"><li>• Panoramic views</li></ul>	<ul style="list-style-type: none"><li>• Central airconditioning</li></ul>	Beach : 5 Km Airport: 60 Km
<b>PARKING</b>	<b>KITCHEN</b>	<b>GARDEN AND TERRACES</b>	<b>HEATING</b>
Parking no Cars: 1	<ul style="list-style-type: none"><li>• Open kitchen</li></ul>	<ul style="list-style-type: none"><li>• Open terrace</li><li>• Play Ground</li><li>• Landscaped</li><li>• Private garden</li><li>• Communal Garden</li></ul>	<ul style="list-style-type: none"><li>• Central gas heating</li></ul>
<b>EXTRA</b>			
<ul style="list-style-type: none"><li>• Outdoor jacuzzi</li><li>• Reinforced door</li></ul>			

## PROPERTY GALLERY















0 1 2 3 4 5  
A3 1/75  
A4 1/100

**BUILT SURFACE** 72,95m<sup>2</sup>  
TERRACE 100%

#### HOUSES 07-63

LIVING ROOM KITCHEN 24,50m<sup>2</sup>  
BEDROOM 1 12,70m<sup>2</sup>  
BEDROOM 2 9,00m<sup>2</sup>  
BATHROOM 1 4,00m<sup>2</sup>  
BATHROOM 2 3,70m<sup>2</sup>  
TERRACE (100%) 13,00m<sup>2</sup>

**TOTAL USABLE** 66,90m<sup>2</sup>

**GARDEN** 50,50m<sup>2</sup>

### GROUND FLOOR



**BLOCK 1**  
HOUSES 01 to 28

**BLOCK 2**  
HOUSES 29 to 56

**BLOCK 3**  
HOUSES 56 to 84

**BLOCK 4**  
HOUSES 85 to 112

### GROUND FLOOR









**"OUR EXPERIENCE IS YOUR GUARANTEE"**