



REF: # 10234

FINESTRAT



INFO

PRICE: 825.000 €

PROPERTY TYPE: Villa

CITY: Finestrat

BEDROOMS: 3

Bathrooms: 3

Build (m2): 145

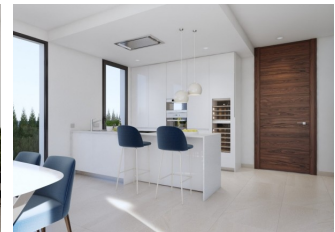
Plot (m2): 450

Terrace (m2): -

Year: -

Floor: -

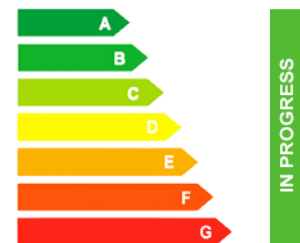
Old price -



DESCRIPTION

NEW BUILD VILLAS IN FINESTRAT New Build residential of modern villas located in Sierra Cortina, Finestrat. Modern style New Build villas with 3 bedrooms, 3 bathrooms, open plan kitchen, large living room with access to the terrace, private garden with the pool and parking space. Villas has a large terrace with sea and mountain views. Residential located 5 min by car from all the services that Benidorm can offer and in an environment with an average annual temperature of 20°C and 300 days of sunshine a year, 44 km away from Alicante airport, 3 km from the sea and 200 meters to the golf.

ENERGETIC CERTIFIED



VIEWS

- Panoramic views

PARKING

Garage no Cars : 1

**GARDEN AND
TERRACES**

- Open terrace
- Private garden

EXTRA

- Reinforced door









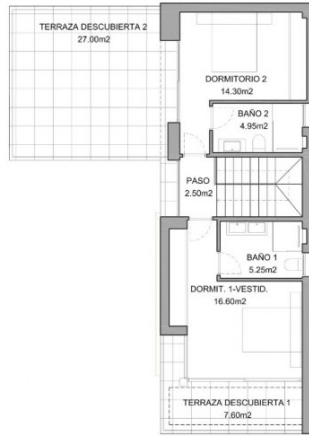






PLANTA BAJA - SUPERFICIES

Escala 1/100

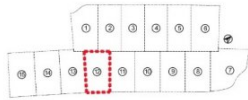


PLANTA ALTA - SUPERFICIES

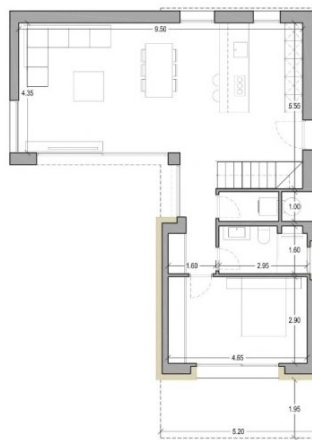
Escala 1/100

SUPERFICIES PARCELA 12

SUPERFICIE DE PARCELA	450.17 m ²
SUPERFICIE COMP. CONSTRUIDA VIVIENDA	145.25 m ²
SUPERFICIE CONSTRUIDA PLANTA BAJA	86.05 m ²
SUPERFICIE CONSTRUIDA PLANTA PRIMERA	53.50 m ²
SUPERFICIE TERRAZAS CUBIERTAS P. BAJA (100%)	10.20 m ²
SUPERFICIE TERRAZA DESCUBIERTA PERGOLA P.B.	29.55 m ²
SUPERFICIE TERRAZA CUBIERTA P.1 (100%)	1.20 m ²
SUPERFICIE TERRAZA DESCUBIERTA P.1	34.60 m ²
SUPERFICIE SÓTANO	0.00 m ²
PISCINA - LÁMINA DE AGUA	28.00 m ²
SUPERFICIE CONSTRUIDA TOTAL PROYECTO	243.10 m ²

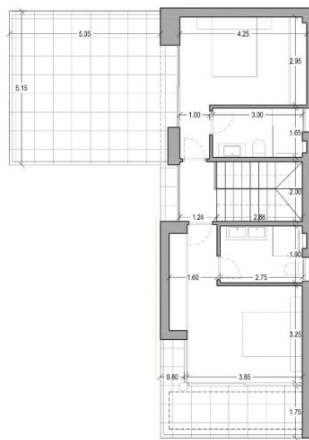


PARCELA 12



PLANTA BAJA - COTAS

Escala 1/100

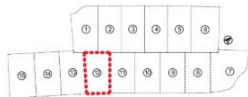


PLANTA ALTA - SUPERFICIES

Escala 1/100

SUPERFICIES PARCELA 12

SUPERFICIE DE PARCELA	450.17 m ²
SUPERFICIE COMP. CONSTRUIDA VIVIENDA	145.25 m ²
SUPERFICIE CONSTRUIDA PLANTA BAJA	86.05 m ²
SUPERFICIE CONSTRUIDA PLANTA PRIMERA	53.50 m ²
SUPERFICIE TERRAZAS CUBIERTAS P. BAJA (100%)	10.20 m ²
SUPERFICIE TERRAZA DESCUBIERTA PERGOLA P.B.	29.55 m ²
SUPERFICIE TERRAZA CUBIERTA P.1 (100%)	1.20 m ²
SUPERFICIE TERRAZA DESCUBIERTA P.1	34.60 m ²
SUPERFICIE SÓTANO	0.00 m ²
PISCINA - LÁMINA DE AGUA	28.00 m ²
SUPERFICIE CONSTRUIDA TOTAL PROYECTO	243.10 m ²



PARCELA 12

"OUR EXPERIENCE IS YOUR GUARANTEE"