



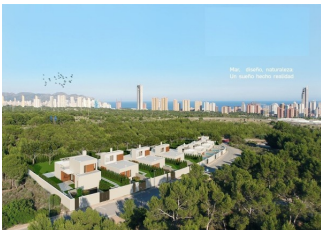
REF: # 10221

FINESTRAT



INFO

PRICE:	745.000 €
PROPERTY TYPE:	Villa
CITY:	Finestrat
BEDROOMS:	3
Bathrooms:	3
Build (m2):	203
Plot (m2):	459
Terrace (m2):	-
Year:	-
Floor:	-
Old price	-



DESCRIPTION

NEW BUILD VILLAS IN FINESTRAT New Build residential of 9 villas in Finestrat, in Sierra Cortina – one of the best urbanizations on Costa Blanca. Residential consist of 4 different types of dwellings adopted from the needs of clients. Some of the models comes build over 1 or 2 floors, with underbuild , solarium. All villas has 3 bedrooms, 2 or 3 bathrooms, open plan kitchen with lounge, build-in wardrobes, air conditioning and atherothermal, equipped kitchen, private garden with pool and parking. Residential located in the Sierra Cortina resort complex, next to two golf courses, theme parks, a large shopping centre and a few minutes from the beaches of Benidorm. Finestrat located in the Marina Baixa region of the Costa Blanca, close to neighbouring Benidorm and about 40 kilometres from the city of Alicante and the international airport. The village is situated on the mountainside of Puig Campana and offers beautiful views of the mountains, the coast and the Mediterranean Sea.

ENERGETIC CERTIFIED



VIEWS

- Panoramic views

PARKING

Garage no Cars : 1

**GARDEN AND
TERRACES**

- Open terrace
- Private garden

HEATING

- Central gas heating

EXTRA

- Reinforced door

VIVIENDA TIPO A



Mar, diseño, naturaleza:
Un sueño hecho realidad









Entre la naturaleza y el mar.
A 5 minutos de las playas.





TIPOLOGIA

TIPO A

PLANTA BAJA Y PRIMERA

SUPERFICIES DE VIVIENDA

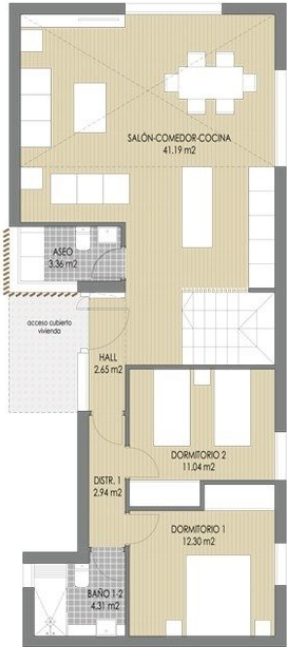
	P.SÓTANO	P.BAJA	P.PRIMERA	TOTAL
SUP. ÚTIL CERRADA	41.07 m²	77.79 m²	24.16 m²	143.02 m²
SUP. ÚTIL ABIERTA	0.00 m²	0.00 m²	18.67 m²	18.67 m²
SUP. ÚTIL TOTAL				161.69 m²
SUP. CONS. CERRADA	49.78 m²	97.22 m²	31.27 m²	178.27 m²
SUP. CONS. ABIERTA	0.00 m²	5.01 m²	19.79 m²	24.80 m²
SUP. CONS. TOTAL				203.07 m²

SUPERFICIES DE PARCELA

PARCELA	1	2	3	4	5	6	7	8	9
SUP. m2	439.00	409.43	409.43	409.43	409.43	409.43	409.43	533.40	
SUP. m2 predio urbano	226.54	203.84	203.36	204.93	210.61	218.31	198.58	232.42	437.96

ESQUEMA DE VIVIENDAS

The figure is a detailed site plan of a residential development. It shows a grid of nine parcels, labeled PARCELA 1 TIPO A through PARCELA 9 TIPO D. Each parcel contains a schematic drawing of the buildings and their internal layout. The parcels are arranged in a roughly rectangular grid, with Parcela 1 at the top left and Parcela 9 at the bottom right. A north arrow is located in the top right corner of the map. The map also shows surrounding streets and green spaces.

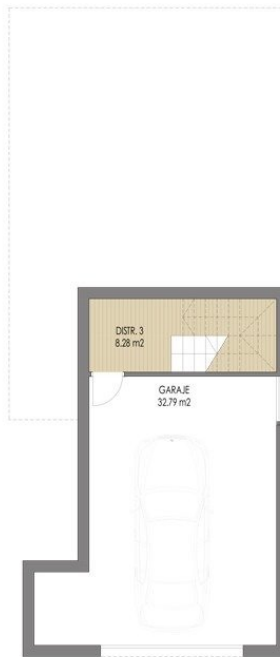


PLANTA BAJA



PLANTA PRIMERA

NOTA: El presente documento es de carácter informativo. Los planos, imágenes, superficies y cotas expresadas podrán experimentar variaciones por exigencias técnicas del proyecto. Escala gráfica: 0 1 2 3 4 5 6 7m

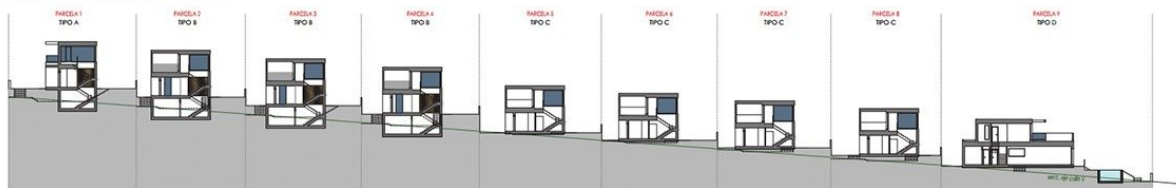


PLANTA SÓTANO

NOTA: El presente documento es de carácter informativo. Los planos, imágenes, superficies y cotas expresadas podrán experimentar variaciones por exigencias técnicas del proyecto. Todo el mobiliario, armarios y electrodomésticos, son meramente decorativos.

Escala gráfica 0 1 2 3 4 5 6 7m

ORDENACIÓN



Escala gráfica 0 5 10 20

"OUR EXPERIENCE IS YOUR GUARANTEE"