



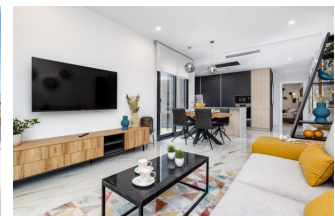
REF: # 9607

ORIHUELA COSTA (PLAY FLAMENCA BEACH)



INFO

PRICE:	369.000 €
PROPERTY TYPE:	Apartment
CITY:	Orihuela Costa (Play Flamenca Beach)
BEDROOMS:	2
Bathrooms:	2
Build (m2):	70
Plot (m2):	-
Terrace (m2):	46
Year:	-
Floor:	-
Old price	-



DESCRIPTION

NEW BUILD, LUXURY RESIDENTIAL APARTMENTS, GROUND FLOOR, IN PLAYA FLAMENCA close to the sea. ****SPECIAL PROMOTION**** ALL INCLUDED !! FURNITURE - SPOT LIGHTS + ROLLER BLINDS + WHITE GOODS + A/C + HOME APPLIANCES + DECORATION + SMART TV 43" + KITCHENWARE - AND READY TO MOVE IN !! This 70M2 luxury ground floor apartment consists of 2 bedrooms, 2 bathrooms and a large 46m2 terrace. It is located in Playa Flamenca close to the sea and comes with underground parking and a closed storeroom. The complex has a communal swimming pool with green areas, a gym with sauna, a children's playground and a pentaquin area. Playa Flamenca is a quiet beach-side residential urbanization, located 40 minutes drive from Alicante airport and 15 minutes drive from

the bustling town of Torrevieja. The urbanisation made of apartments and villas sits on a well-kept, small beach with sun bed hire available during the summer months. Across the main road, inland from the complex, there is a large modern shopping centre with a major supermarket, many restaurant and bars, banks, hairdressers and boutiques. Only 5 minutes drive is “La Zenia Boulevard” the largest shopping centre in the Alicante region, it’s a one-stop destination for clothes, shoes and general supplies. No matter what you're after, chances are you won't walk out empty-handed. Three championship courses are within a 10-minute drive of the resort, including the stunning Villamartin, which is often one of the venues for the Mediterranean Open. Campoamor Golf Course is set amongst palm and pine trees and is a beauty; nearby Las Ramblas is another magnificent course and a real test of golfing skills. Nearest airports: Murcia and Alicante are 50 minutes away.



STYLE <ul style="list-style-type: none"> Modern Contemporary 	VIEWS <ul style="list-style-type: none"> Panoramic views 	AIRCONDITIONING <ul style="list-style-type: none"> Central airconditioning 	DISTANCE TO : <div>Beach : 500 m</div> <div>Airport: 50 Km</div>
PARKING <div>Parking no Cars: 1</div>	MAIN LIVING AREA <ul style="list-style-type: none"> Bathroom en-suite Gym 	FLOORING <ul style="list-style-type: none"> Tile floors 	KITCHEN <ul style="list-style-type: none"> Open kitchen Equipped kitchen Granite countertop
GARDEN AND TERRACES <ul style="list-style-type: none"> Open terrace Exterior lights Play Ground Electric gate Communal Garden 	EXTRA <ul style="list-style-type: none"> Built in wardrobes Reinforced door Double glazed windows Storage room 	ENERGETIC CERTIFIED <div>  </div>	

"OUR EXPERIENCE IS YOUR GUARANTEE"