



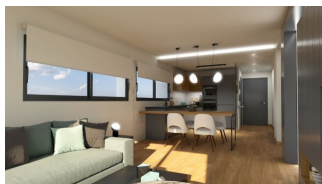
REF: # 8997

BENITACHELL



INFO

PRICE:	309.000 €
PROPERTY TYPE:	Apartment
CITY:	Benitachell
BEDROOMS:	2
Bathrooms:	2
Build (m2):	182
Plot (m2):	-
Terrace (m2):	-
Year:	-
Floor:	-
Old price	-



DESCRIPTION

New built apartments, with a modern architecture, with 2 bedrooms and 2 bathrooms, kitchen open to the living room, with various models to choose from, terrace and garden on the ground floor apartments, and solarium on the top floor, all distributed to make the most of the space, taking advantage of the Mediterranean light and offering a plus of comfort in your day to day. The equipment in the apartments are also oriented to comfort with under-floor heating, hot and cold air conditioning by conduits with thermostat in the living room, hot water by Altherma system, electrical appliances are included and a project of decoration to give them style and warmth. The communal areas are designed for relax and enjoy as a family, with pool surrounded by large terraces to enjoy the sun, playground for kids, social club, gardens and parking areas. Within a short distance to Cala del Llebeig, the urban core of Moraira and all the services that Residential Resort Cumbre del Sol is equipped with.

ENERGETIC CERTIFIED



VIEWS

- Sea views

KITCHEN

- Equipped kitchen

ENERGETIC CERTIFIED



"OUR EXPERIENCE IS YOUR GUARANTEE"