



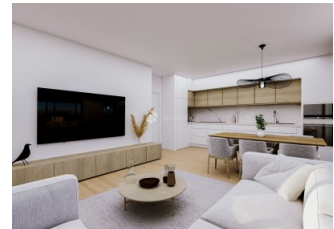
REF: # 8898

CALPE/MORAIRA (CALPE CENTRO)



INFO

PRICE:	245.000 €
PROPERTY TYPE:	Apartment
CITY:	Calpe/Moraira (Calpe centro)
BEDROOMS:	3
Bathrooms:	2
Build (m2):	85
Plot (m2):	-
Terrace (m2):	87
Year:	
Floor:	100
Old price	-




DESCRIPTION

This project meets all your wishes and needs. This is a very special building that is the character, the brand, the soul, the DNA of the project. A tower, slender and different, which grows up like an arrow shot to the sky and looks for the light, always upwards. Only 6.000 euro for do the reservation and 25% of the sales price when sign the contract. 26 apartments full of light and joy. 26 apartments ready to live in, with large terraces. 26 apartments that will give you the Penthouse feeling. The tower is strategically located in Calpe. It is close to the main road, which provides good access to anywhere in the city. The local area can offer all kinds of services, from restaurants, supermarkets, shops to leisure and sports venues. The beach is less than 2 minutes' walk from the apartments. Include in the price is all whitegoods. Complete bathroom fittings. Complete kitchen fittings. Floor heating on all bath rooms. Included in the price is also a ground floor garage and a storeroom. Large common area with swimming pool, children's pool, sun loungers,

play area, paddle tennis, gym, etc. Spacious rooms with large windows that make the apartments light and airy. All the apartment is south facing. Most have views of the Mediterranean Sea. All apartments consist of 3 bedrooms and 2 bathrooms. Terraces from 24m2 to 184m2. Prices from 245,000 euros to 405,000 euros plus taxes. The town of Calpe can offer absolutely everything to satisfy an excellent quality of life, and is surrounded by a seafront promenade with all kinds of shops and restaurants. Near the apartments is the "Peñón de Ifach", (Calpe Rock) a very attractive tourist destination on the Costa Blanca.



STYLE <ul style="list-style-type: none"> Modern 	AIRCONDITIONING <ul style="list-style-type: none"> Central airconditioning 	DISTANCE TO : <div>Beach : 200 m</div> <div>Airport: 70 Km</div> <div>Town center : 100 m</div>	ORIENTATION <div>South</div>
PARKING <div>Garage no Cars : 1</div>	MAIN LIVING AREA <ul style="list-style-type: none"> Bathroom en-suite 	FLOORING <ul style="list-style-type: none"> Tile floors Laminate floors 	KITCHEN <ul style="list-style-type: none"> Open kitchen Equipped kitchen Granite countertop
GARDEN AND TERRACES <ul style="list-style-type: none"> Covered terrace Exterior lights Palm trees Play Ground Landscaped Fenced Electric gate Padle tennis Communal Garden 	EXTRA <ul style="list-style-type: none"> Built in wardrobes Reinforced door Double glazed windows Door bell with camera Satellite TV Lift Internet Concierge 	ENERGETIC CERTIFIED 	

"OUR EXPERIENCE IS YOUR GUARANTEE"