



REF: # 6734

ALICANTE



INFO

PRICE: 222.000 €

PROPERTY TYPE: Villa (Semi detached)

CITY: Alicante

BEDROOMS: 3

Bathrooms: 2

Build (m2): 99

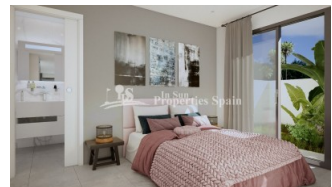
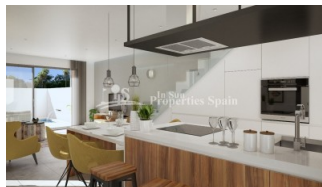
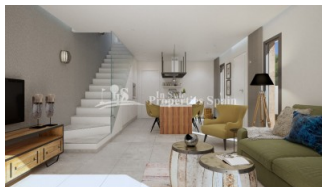
Plot (m2): 164

Terrace (m2): 18

Year:

Floor: -

Old price -

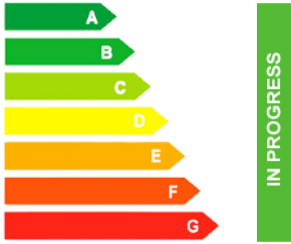


DESCRIPTION

"KEY READY" This is a wonderful new SOUTHWEST facing development of SEMI-DETACHED VILLAS in the Spanish Town of DAYA NUEVA. Located just 6 km from the award winning beaches of Guardamar del Segura and 25 minutes from the International airport of Alicante. The Villas of 99m2 are distributed on two floors and consists of 3 good size bedrooms (one of them located on the ground floor) with built in wardrobes, 2 full bathrooms, an open concept living space with American style kitchen and a spacious and bright living room with direct access to the garden with the private pool with feature water wall and terrace. Within the 169m2 plot there is also ample parking and the villas come with pre-installation of AC. Daya Nueva is a rural town surrounded by orange and lemon groves. There is a municipal swimming pool, open in the summer months, a few bars and restaurants and a number of parks. Daya Nueva is just just 4km from the large Spanish town of Almoradi, 15 minutes from San Isidro Train Station, 9km from La Marquesa Golf Course, 20 minutes from the Hospital and 15 minutes from both international and local schools.

ENERGETIC CERTIFIED



STYLE	VIEWS	DISTANCE TO :	ORIENTATION
<ul style="list-style-type: none"> Modern Contemporary 	<ul style="list-style-type: none"> Panoramic views Mountain views 	Beach : 6 Km Airport: 40 Km Town center : 500 m	South west
FURNITURE	PARKING	FLOORING	KITCHEN
<ul style="list-style-type: none"> Not furnished 	Parking no Cars: 1	<ul style="list-style-type: none"> Tile floors Stone floors 	<ul style="list-style-type: none"> Open kitchen Equipped kitchen
GARDEN AND TERRACES	EXTRA	ENERGETIC CERTIFIED	
<ul style="list-style-type: none"> Covered terrace Open terrace Stone walls Private garden 	<ul style="list-style-type: none"> Built in wardrobes Reinforced door Double glazed windows 	 <p>The image shows a vertical energy efficiency scale with seven horizontal bars labeled A through G. The bars are colored in a gradient from green at the top to red at the bottom. A vertical green bar on the right side of the scale is labeled 'IN PROGRESS'.</p>	

"OUR EXPERIENCE IS YOUR GUARANTEE"