



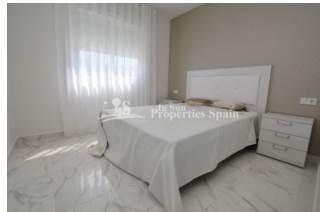
REF: # 5771

ORIHUELA COSTA (TORRE LA MATA)



INFO

PRICE:	150.500 €
PROPERTY TYPE:	Apartment
CITY:	Orihuela Costa (Torre La Mata)
BEDROOMS:	2
Bathrooms:	1
Build (m2):	77
Plot (m2):	-
Terrace (m2):	18
Year:	2018
Floor:	-
Old price	-




DESCRIPTION

STUNNING luxury 2 bedroom, 1 or 2 bathroom apartments located just 100m from LA MATA BEACH located in Residencial Paris Playa. These properties are all finished to a very high standard & using quality energy saving materials & top quality fixtures & fittings. All properties have floor heating to the bathroom/s, pre-installation of ducted A/C, private terraces, communal parking and garden. These superb properties are located less than 1 minutes walk from the stunning La Mata beach & around 5 minutes walk from the town centre where you will find all of the usual amenities along with a local weekly market. La Mata is a small town located 5 km northeast of Torrevieja along the Costa Blanca, in the province of Alicante in southeast Spain. Many of the residents are expatriates. Torre La Mata is renowned by tourists and locals for having an unspoilt Spanish charm, due to the lack of high-rise hotels and local affluency. Alicante international airport is around 30 minutes drive away.

ENERGETIC CERTIFIED



STYLE <ul style="list-style-type: none"> • Modern • Contemporary 	DISTANCE TO : <p>Beach : 100 m</p> <p>Airport: 40 Km</p> <p>Town center : 200 m</p>	ORIENTATION <p>South East West</p>	FURNITURE <ul style="list-style-type: none"> • Not furnished
PARKING <p>Parking no Cars: 1</p>	FLOORING <ul style="list-style-type: none"> • Tile floors • Stone floors 	KITCHEN <ul style="list-style-type: none"> • Open kitchen • Equipped kitchen 	GARDEN AND TERRACES <ul style="list-style-type: none"> • Open terrace • Communal Garden
EXTRA <ul style="list-style-type: none"> • Built in wardrobes • Reinforced door • Double glazed windows 	ENERGETIC CERTIFIED  <p>The image shows a vertical energy efficiency scale with seven horizontal bars labeled A through G. Bar A is dark green, B is green, C is light green, D is yellow, E is orange-yellow, F is orange, and G is red. To the right of these bars is a vertical green bar labeled 'IN PROGRESS'.</p>		

"OUR EXPERIENCE IS YOUR GUARANTEE"