



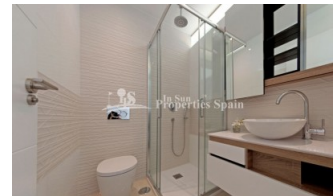
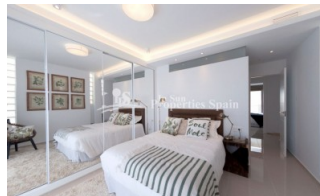
REF: # 5768

QUESADA-ROJALES (DONA PEPA)



#### INFO

PRICE:	265.000 €
PROPERTY TYPE:	Townhouse
CITY:	Quesada-Rojales (Dona Pepa)
BEDROOMS:	3
Bathrooms:	3
Build ( m2 ):	128
Plot ( m2 ):	-
Terrace ( m2 ):	83
Year:	2019
Floor:	-
Old price	-



#### DESCRIPTION

Delivery Feb 2019. Allegra Residential in urbanisation DOÑA PEPA is a lovely complex where you can find different model of properties; apartments and townhouses. It's a gated residential, with beautiful green areas, communal swimming pools and parking, designed in Mediterranean style. Ivory townhouses are spacious (up to 127,5m2) have 3 or 4 bedrooms, 3 bathrooms, 3 terraces, a storeroom, private minimum 110m2 garden and private minimum 55m2 roof terrace. Doña Pepa is an elegant urbanization with wide avenues, wonderful views to the Natural Park and the salt lakes with a wide range of leisure activities and all the necessary amenities without having to take a car. It is only 30 minutes away from international airports, 35 minutes from Alicante and 5 minutes from the most beautiful beaches of the Costa Blanca. It is an area with good annual temperatures and a great atmosphere. The area of Doña Pepa has a widely varied infrastructure offering a multitude of shops, supermarkets, restaurants, cafes, medical centers, pharmacies, golf courses, banks, a 4\* Hotel with a Spa, a church, a social center, a

cultural center, sports areas, an aquapark, a school, two natural parks, a religious center and high quality shopping complexes. Also available with 4 bedrooms, 3 bathrooms - price from €279,000.



STYLE	VIEWS	DISTANCE TO :	PARKING
<ul style="list-style-type: none"> <li>Modern</li> <li>Contemporary</li> </ul>	<ul style="list-style-type: none"> <li>Panoramic views</li> </ul>	Beach : 9 Km Airport: 30 Km Town center : 1 Km	Parking no Cars: 1
FLOORING	KITCHEN	GARDEN AND TERRACES	ENERGETIC CERTIFIED
<ul style="list-style-type: none"> <li>Tile floors</li> <li>Stone floors</li> </ul>	<ul style="list-style-type: none"> <li>Open kitchen</li> <li>Equipped kitchen</li> <li>Granite countertop</li> </ul>	<ul style="list-style-type: none"> <li>Covered terrace</li> <li>Open terrace</li> <li>Private garden</li> <li>Communal Garden</li> </ul>	<div> <div> <div>A</div> <div>B</div> <div>C</div> <div>D</div> <div>E</div> <div>F</div> <div>G</div> </div> <div>           In wardrobes            Reinforced door            Double glazed windows         </div> <div>IN PROGRESS</div> </div>

"OUR EXPERIENCE IS YOUR GUARANTEE"