



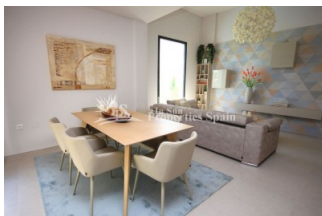
REF: # 4681

QUESADA-ROJALES (DONA PEPA)



#### INFO

|                 |                             |
|-----------------|-----------------------------|
| PRICE:          | 385.000 €                   |
| PROPERTY TYPE:  | Villa                       |
| CITY:           | Quesada-Rojales (Dona Pepa) |
| BEDROOMS:       | 3                           |
| Bathrooms:      | 2                           |
| Build ( m2 ):   | 120                         |
| Plot ( m2 ):    | 283                         |
| Terrace ( m2 ): | -                           |
| Year:           | 2017                        |
| Floor:          | -                           |
| Old price       | -                           |



#### DESCRIPTION

From a well renowned builder, this is a KEY READY 120m2, 3 bedroom, 2 bathroom Villa at Eivissa Residential in Dona Pepa, ROJALES. Set within a 283m2 plot with private 3.5x7m swimming pool and 75m2 basement. The development is located only 25 minutes from Alicante airport, 30 minutes from the centre of Alicante, less than 5 minutes from shops and restaurants and just 5 km driving distance from the beautiful beaches of Guardamar del Segura. Comprising of 10 villas with 2 or 3 bedrooms, terrace, solarium, individual pool and Mediterranean style garden. These houses are equipped with the latest in Smart Home technology 3.0. and can be characterized by its privacy, security and exclusive design. Doña Pepa is a modern urbanisation belonging to Ciudad Quesada and has all the amenities which include supermarkets, bars, hotel and shops as well as a bank. Ciudad Quesada town centre is a ten minute walk from Doña Pepa. In Ciudad Quesada itself you will find international supermarkets, restaurants, banks, a medical centre as well

as a water park. The property is ideally located if you are a golf enthusiast, with La Marquesa Golf Club just a five minute drive away. The nearest beaches are at Guardamar/Campomar and La Mata ten minutes drive away.

#### ENERGETIC CERTIFIED

energy house

Image type unknown

<https://www.viass.com//assets/images/viass/energy/D>

|                                                                                                                                                 |                                                                                                                                                                                                                                               |                                                                                                                                           |                                                                                                                                             |
|-------------------------------------------------------------------------------------------------------------------------------------------------|-----------------------------------------------------------------------------------------------------------------------------------------------------------------------------------------------------------------------------------------------|-------------------------------------------------------------------------------------------------------------------------------------------|---------------------------------------------------------------------------------------------------------------------------------------------|
| <b>STYLE</b> <ul style="list-style-type: none"> <li>• Modern</li> <li>• Contemporary</li> </ul>                                                 | <b>DISTANCE TO :</b> <div>Beach : 7 Km</div> <div>Airport: 30 Km</div> <div>Town center : 1 Km</div>                                                                                                                                          | <b>ORIENTATION</b> <div>South East West</div>                                                                                             | <b>FURNITURE</b> <ul style="list-style-type: none"> <li>• Not furnished</li> </ul>                                                          |
| <b>PARKING</b> <div>Parking no Cars: 1</div>                                                                                                    | <b>FLOORING</b> <ul style="list-style-type: none"> <li>• Tile floors</li> <li>• Stone floors</li> </ul>                                                                                                                                       | <b>KITCHEN</b> <ul style="list-style-type: none"> <li>• Open kitchen</li> <li>• Equipped kitchen</li> <li>• Granite countertop</li> </ul> | <b>GARDEN AND TERRACES</b> <ul style="list-style-type: none"> <li>• Open terrace</li> <li>• Landscaped</li> <li>• Private garden</li> </ul> |
| <b>EXTRA</b> <ul style="list-style-type: none"> <li>• Built in wardrobes</li> <li>• Reinforced door</li> <li>• Double glazed windows</li> </ul> | <b>ENERGETIC CERTIFIED</b> <div>energy house</div> <div>Image type unknown</div> <div> <a href="https://www.viass.com/assets/images/viass/energy/D_en-energy.png">https://www.viass.com/assets/images/viass/energy/D_en-energy.png</a> </div> |                                                                                                                                           |                                                                                                                                             |

**"OUR EXPERIENCE IS YOUR GUARANTEE"**