



REF: # 4507

ALICANTE



#### INFO

PRICE: 290.000 €

PROPERTY TYPE: Apartment

CITY: Alicante

BEDROOMS: 2

Bathrooms: 2

Build ( m2 ): 82

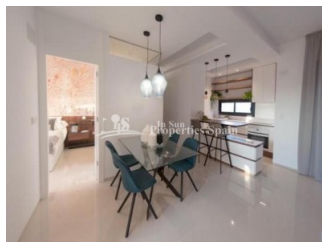
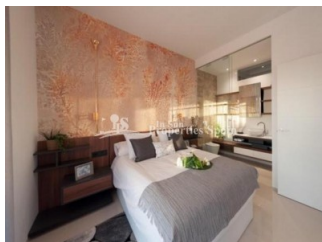
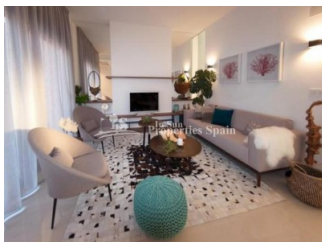
Plot ( m2 ): 180

Terrace ( m2 ): 80+5

Year: 2018

Floor: -

Old price -




#### DESCRIPTION

Key Ready Beach Avenue is a Residential in ARENALES DEL SOL, ALICANTE that boasts 30 2 bedroom, 2 bathroom properties divided into 2 blocks. These blocks have 3 floors: ground floor with garden, first floor with terrace and penthouses with solarium. All the apartments are facing the swimming pool. Likewise, one of the blocks has underground private parking. This is the last remaining apartment. It is on the ground floor, has 171,2 m2 constructed area with 2 bedrooms, 2 bathrooms and has two terraces (one covered of 5,5 m2, and an uncovered one with 80 m2!) plus a lovely garden of 100 m2. The Residential is composed by spectacular garden areas where you will be able to take a nice walk. The area where is located this Residential is unbeatable. It's only 10 minutes from Alicante and 5 minutes walking distance to the beach of Arenales del Sol. You can't go without visiting Arenales del Sol beach, it's one of the best beaches on our coast. With a history spanning some 40+years and having built over 30,000 homes, this builder designs and builds houses according to the needs of the customer, carefully selecting every detail in a personal way. It is their aim to address the individual wishes

and concerns of every project. For this purpose they only use materials of the highest quality which are also environmentally friendly. Their developments are a faithful reflection of Mediterranean spirit, an affordable luxury that binds to the comfort and quality we all seek in our home. Definitely, a privileged place to live surrounded by nature, leisure, health and a good quality of life. Arenales is one of the best beaches on the Costa Blanca with a white natural sand dunes reserve and clear blue water. It has been nominated with a blue Flag, as one of the most popular beaches on the Costa Blanca, it is the perfect place for sports and nautical activities. Its promenade leads to the sea-front through wooden walkways, made in order to preserve the native flora and to make it accessible for everybody. This area is well connected and has public transport to Alicante and its International Airport (only 5 minutes away) and many other points of interest. Around this area you will also find shops, restaurants and services open all year round.



STYLE	VIEWS	DISTANCE TO :	ORIENTATION
<ul style="list-style-type: none"> <li>Modern</li> <li>Contemporary</li> </ul>	<ul style="list-style-type: none"> <li>Sea views</li> </ul>	Beach : 500 m <hr/> Airport: 20 Km <hr/> Town center : 500 m	South East West <hr/>
FURNITURE	PARKING	FLOORING	KITCHEN
<ul style="list-style-type: none"> <li>Not furnished</li> </ul>	Parking no Cars: 1 <hr/>	<ul style="list-style-type: none"> <li>Tile floors</li> <li>Stone floors</li> </ul>	<ul style="list-style-type: none"> <li>Open kitchen</li> <li>Equipped kitchen</li> <li>Granite countertop</li> </ul>
GARDEN AND TERRACES	EXTRA	ENERGETIC CERTIFIED	
<ul style="list-style-type: none"> <li>Covered terrace</li> <li>Open terrace</li> <li>Landscaped</li> <li>Private garden</li> <li>Communal Garden</li> </ul>	<ul style="list-style-type: none"> <li>Built in wardrobes</li> <li>Reinforced door</li> <li>Double glazed windows</li> </ul>	 <p>The image shows a vertical energy efficiency scale with seven levels, A through G, represented by horizontal bars of increasing length and changing colors from green at the top to red at the bottom. Level A is dark green, B is medium green, C is light green, D is yellow, E is orange-yellow, F is orange, and G is red. To the right of this scale is a vertical green bar with the text 'IN PROGRESS' written vertically inside it, positioned between the D and E levels.</p>	

**"OUR EXPERIENCE IS YOUR GUARANTEE"**