



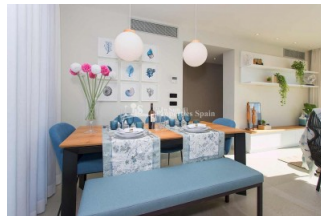
REF: # 4490

ORIHUELA COSTA (VILLAMARTIN PAU-1)



#### INFO

PRICE:	467.000 €
PROPERTY TYPE:	Apartment
CITY:	Orihuela Costa (Villamartin Pau-1)
BEDROOMS:	3
Bathrooms:	2
Build ( m2 ):	90
Plot ( m2 ):	-
Terrace ( m2 ):	117
Year:	2018
Floor:	-
Old price	429.000 €




#### DESCRIPTION

Samoa apartments are located in VILLAMARTIN urbanization surrounded by 3 iconic golf courses of the Costa Blanca, such as Villamartin Golf, Las Ramblas Golf and Las Colinas. This complex is composed by 16 apartments with 2 and 3 bedroom properties, 2 bathroom each with floor heating, air conditioning by conducts fully installed, larges picture windows, private terraces and option of garage and storage. This development also has a communal Jacuzzi and swimming pool with garden areas. The penthouses also have a spacious solarium and are equipped with private Jacuzzi, exterior shower and in built barbecue. Key features include; Key ready, South East Orientation, Floor heating and mirrors in bathrooms, Air conditioning by conducts, Private terrace, Communal swimming pool and jacuzzi. The penthouses also include; Magnificent sea views, Private Solarium, Jacuzzi, Exterior shower, Exterior Barbecue, Garage and storage room included in price and Electrical shutter in living room. PLUS Special offer until end of year;

Full installation of BALAY white good package, LED lighting AND Promo 5 (Valid until the end of the year); Furniture voucher valued in 5.000€, 5.000€ discount on property price. Just 10 minutes away from La Zenia beach and 5 minutes walking distance from Commercial Center Zenia Boulevard. It is 40 minutes from Alicante airport. This development is located in an area with many services.



STYLE	VIEWS	DISTANCE TO :	ORIENTATION
<ul style="list-style-type: none"> <li>Modern</li> <li>Contemporary</li> </ul>	<ul style="list-style-type: none"> <li>Panoramic views</li> <li>Sea views</li> </ul>	Beach : 3 Km Airport: 50 Km Town center : 1 Km	South west
FURNITURE	PARKING	FLOORING	KITCHEN
<ul style="list-style-type: none"> <li>Not furnished</li> </ul>	Garage no Cars : 1 Parking no Cars: 1	<ul style="list-style-type: none"> <li>Tile floors</li> <li>Stone floors</li> </ul>	<ul style="list-style-type: none"> <li>Open kitchen</li> <li>Equipped kitchen</li> <li>Granite countertop</li> </ul>
GARDEN AND TERRACES	EXTRA	ENERGETIC CERTIFIED	
<ul style="list-style-type: none"> <li>Covered terrace</li> <li>Open terrace</li> <li>Palm trees</li> <li>Landscaped</li> <li>Stone walls</li> <li>Communal Garden</li> </ul>	<ul style="list-style-type: none"> <li>Outdoor jacuzzi</li> <li>Reinforced door</li> <li>Double glazed windows</li> </ul>	 <p>The image shows a vertical energy efficiency scale with seven levels, A through G, represented by horizontal bars of increasing length and changing colors from green at the top to red at the bottom. Level A is the shortest (green), B is slightly longer (light green), C is longer (yellow-green), D is longer (yellow), E is longer (orange-yellow), F is longer (orange), and G is the longest (red). To the right of this scale is a vertical green bar with the text 'IN PROGRESS' written vertically inside it, positioned between the D and E levels.</p>	

**"OUR EXPERIENCE IS YOUR GUARANTEE"**