



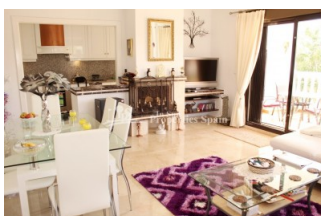
REF: # 4321

ORIHUELA COSTA (VILLAMARTIN PAU-8 )



#### INFO

PRICE:	135.000 €
PROPERTY TYPE:	Apartment
CITY:	Orihuela Costa (Villamartin Pau-8 )
BEDROOMS:	3
Bathrooms:	2
Build ( m2 ):	83
Plot ( m2 ):	-
Terrace ( m2 ):	10
Year:	2005
Floor:	-
Old price	145.500 €



#### DESCRIPTION

This lovely modern east/south facing 3 bedroom APARTMENT- AZAHAR is located in VILLAMARTIN – PAU 8 with fantastic view over community garden and walking distance to Villamartin PLAZA with supermarket, bars, restaurants and all amenities. Spacious lounge/dining area with fireplace a full equipped open kitchen with utility room and 3 bedrooms with fitted wardrobes, 2 bathroom (1 one suite), 10m2 sunny terrace. Sold fully furnished with A/C in all the rooms, marble floor. This property is for someone wanting to be close to all amenities - a fantastic holiday location and in a prime rental location and permanent living.

Supermarkets, banks, restaurants & bars are in walking distance plus Villamartin golf course is within a 10min walk! There are 3 other golf courses within 5mins drive and many more within 20mins drive! Public transport operate from nearby and go to the beach or Zenia Boulevard shopping centre both of which are within a 5mins drive however if you dont want to go further you have everything at your feet with this property

and is ready to be used and enjoyed! Just 45mins drive from Alicante airport and just 20mins drive to Murcia airport.



STYLE	VIEWS	AIRCONDITIONING	DISTANCE TO :
<ul style="list-style-type: none"> <li>Modern</li> <li>Mediterranean</li> </ul>	<ul style="list-style-type: none"> <li>Panoramic views</li> </ul>	<ul style="list-style-type: none"> <li>Livingroom</li> <li>Kitchen</li> <li>Bedrooms</li> </ul>	Beach : 3 Km Airport: 50 Km Town center : 1 Km
ORIENTATION	FURNITURE	PARKING	TAX
South	<ul style="list-style-type: none"> <li>Furnished</li> </ul>	Parking no Cars: 1	Community : 1.050 € I.B.I : 318 €
MAIN LIVING AREA	FLOORING	KITCHEN	GARDEN AND TERRACES
<ul style="list-style-type: none"> <li>Bathroom en-suite</li> </ul>	<ul style="list-style-type: none"> <li>Tile floors</li> <li>Marble floors</li> </ul>	<ul style="list-style-type: none"> <li>Open kitchen</li> <li>Equipped kitchen</li> <li>Granite countertop</li> </ul>	<ul style="list-style-type: none"> <li>Covered terrace</li> <li>Palm trees</li> <li>Fenced</li> <li>Stone walls</li> <li>Communal Garden</li> </ul>
HEATING	EXTRA	ENERGETIC CERTIFIED	
<ul style="list-style-type: none"> <li>Fireplace wood</li> </ul>	<ul style="list-style-type: none"> <li>Built in wardrobes</li> <li>Alarm</li> <li>Double glazed windows</li> <li>Satellite TV</li> <li>Internet</li> </ul>	 <p>The image shows a vertical energy efficiency scale with seven horizontal bars labeled A through G. Bar A is dark green, B is medium green, C is light green, D is yellow, E is orange-yellow, F is orange, and G is red. To the right of these bars is a vertical green bar with the text 'IN PROGRESS' written vertically inside it.</p>	

**"OUR EXPERIENCE IS YOUR GUARANTEE"**