



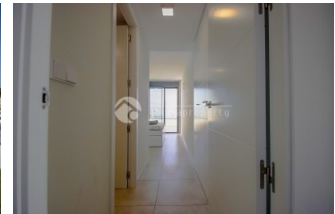
REF: # 13335

FINESTRAT (SIERRA CORTINA)



INFO

PRICE:	645.000 €
PROPERTY TYPE:	Apartment (Penthouse)
CITY:	Finestrat (Sierra Cortina)
BEDROOMS:	3
Bathrooms:	2
Build ( m2 ):	140
Plot ( m2 ):	-
Terrace ( m2 ):	-
Year:	
Floor:	4
Old price	-



DESCRIPTION

Discover this spectacular corner penthouse in the exclusive Seascape residential complex, featuring a southeast orientation that ensures sunlight all day long and uninterrupted, open views of the Mediterranean Sea and the Benidorm skyline. This home stands out for its spaciousness, brightness and an exceptional terrace designed to make the most of Costa Blanca living. Layout Entrance hall 3 bedrooms, all with direct access to a large terrace/balcony Master bedroom with en-suite bathroom 2 full bathrooms (including the en-suite) Open-plan living/dining area, bright and airy, connected to the kitchen Fully equipped kitchen, with views, ideal for everyday living Outdoor space 105 m<sup>2</sup> main terrace, spacious and private Jacuzzi and plenty of room for a chill-out area, outdoor dining and sunbathing Included extras Private parking space Storage room Communal areas (private resort-style facilities) Within the complex you can enjoy: Outdoor swimming pool Indoor swimming pool Gym Coworking room Paddle tennis courts Children's playground Location Just a few minutes by car from Benidorm

and all amenities such as La Marina Shopping Centre, with the airport approximately 30 minutes away—ideal as a permanent residence, second home or investment. A unique property thanks to its orientation, views and outstanding terrace. Ready to enjoy.

## ENERGETIC CERTIFIED



<b>STYLE</b>	<b>VIEWS</b>	<b>AIRCONDITIONING</b>	<b>DISTANCE TO :</b>
<ul style="list-style-type: none"> <li>• Modern</li> </ul>	<ul style="list-style-type: none"> <li>• Panoramic views</li> <li>• Sea views</li> <li>• Mountain views</li> </ul>	<ul style="list-style-type: none"> <li>• Central airconditioning</li> <li>• Livingroom</li> <li>• Kitchen</li> <li>• Bedrooms</li> </ul>	Beach : 2 Km <hr/> Airport: 30 Km <hr/> Town center : 1 Km
<b>ORIENTATION</b>	<b>FURNITURE</b>	<b>PARKING</b>	<b>FLOORING</b>
South east	<ul style="list-style-type: none"> <li>• Furnished</li> </ul>	Garage no Cars : 1	<ul style="list-style-type: none"> <li>• Stone floors</li> </ul>
<b>KITCHEN</b>	<b>GARDEN AND TERRACES</b>	<b>HEATING</b>	<b>ENERGETIC CERTIFIED</b>
<ul style="list-style-type: none"> <li>• Open kitchen</li> <li>• Equipped kitchen</li> <li>• Granite countertop</li> </ul>	<ul style="list-style-type: none"> <li>• Open terrace</li> <li>• Exterior lights</li> <li>• Tennis court</li> <li>• Fruit trees</li> <li>• Palm trees</li> <li>• Play Ground</li> <li>• Stone walls</li> <li>• Electric gate</li> <li>• BBQ/grill</li> <li>• Padle tennis</li> <li>• Private garden</li> <li>• Communal Garden</li> </ul>	<ul style="list-style-type: none"> <li>• Central electric heating</li> <li>• Floor heating bathrooms</li> </ul>	<p>The chart shows the following categories and their status:</p> <ul style="list-style-type: none"> <li><b>A</b> (Green): Pool or jacuzzi</li> <li><b>B</b> (Green): Built wardrobes</li> <li><b>C</b> (Yellow-Green): Reinforced door</li> <li><b>D</b> (Yellow): Double glazed windows</li> <li><b>E</b> (Orange): Hard</li> <li><b>F</b> (Red-Orange): Lift</li> <li><b>G</b> (Red): Internet</li> <li><b>IN PROGRESS</b> (Green vertical bar)</li> <li>• Concierge</li> </ul>

**"OUR EXPERIENCE IS YOUR GUARANTEE"**