



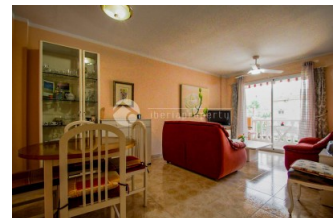
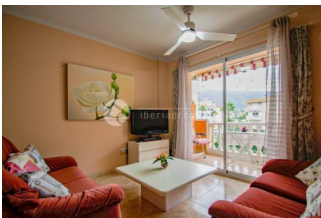
REF: # 12619

ALBIR (ALBIR CENTRO)



INFO

:	Check
PROPERTY TYPE:	Apartment
CITY:	Albir (Albir centro)
BEDROOMS:	1
Bathrooms:	1
Build (m2):	70
Plot (m2):	-
Terrace (m2):	6
Year:	-
Floor:	3
Beds	2




DESCRIPTION

The minimum stay is 10 nights Upon entering the apartment, to the left, there is a functional kitchen equipped with an oven, gas stove, microwave, refrigerator and at the back, a small laundry room to store food, etc. The apartment consists of a bedroom with two single beds, a large window with views of the pool and the mountains, air conditioning, ceiling fan, and a large built-in wardrobe. The living room is all one, and joins the terrace that overlooks the community pool. In the living room you will find two comfortable sofas, a coffee table, the TV and a ceiling fan. In the dining area you will see a dining table with four chairs and a display case with glasses, stemware, etc. On the terrace you will find a table with two chairs to enjoy the sun and the wonderful views. Wifi throughout the apartment. The bathroom is complete and with a bathtub. The building has an elevator, community pool and gardens and a small area for parking unnumbered cars. It is a very quiet and residential building, suitable for seniors and quiet families. It is very well located, and has exits to two of the main streets of the town. Close to everything

you need, supermarkets, bars, restaurants, walks and the beach less than 5 minutes walk.



STYLE	VIEWS	AIRCONDITIONING	FURNITURE
<ul style="list-style-type: none"> Contemporary 	<ul style="list-style-type: none"> Mountain views 	<ul style="list-style-type: none"> Livingroom Bedrooms 	<ul style="list-style-type: none"> Furnished
FLOORING	KITCHEN	GARDEN AND TERRACES	ENERGETIC CERTIFIED
<ul style="list-style-type: none"> Tile floors 	<ul style="list-style-type: none"> Closed kitchen Equipped kitchen 	<ul style="list-style-type: none"> Communal Garden 	 <p>The image shows a vertical energy efficiency scale with seven horizontal bars of increasing length, labeled A through G from top to bottom. The bars are colored in a gradient from dark green (A) to red (G). A vertical green bar on the right side of the scale is labeled 'IN PROGRESS'.</p>

"OUR EXPERIENCE IS YOUR GUARANTEE"