



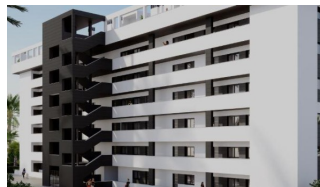
REF: # 12074

TORREVIEJA (LA MATA)



INFO

PRICE:	310.000 €
PROPERTY TYPE:	Apartment
CITY:	Torreveija (La Mata)
BEDROOMS:	2
Bathrooms:	2
Build (m2):	78
Plot (m2):	-
Terrace (m2):	26
Year:	-
Floor:	-
Old price	-




DESCRIPTION

NEW BUILD GATED URBANIZATION IN LA MATA, TORREVIEJA - ONLY 700M FROM THE BEACH. New Build residential complex of 362 apartments with large community areas in Torreveija. You can choose between luxury 2 bedrooms and 2 bathrooms apartments , 3 bedrooms and 2 bathrooms penthouses with private solarium and 2 bedroom, 2 bathroom ground floor apartments with private garden. This 78m2 apartment consists of 2 bedrooms, 2 bathrooms, open plan kitchen, lounge and dining area, private 26m2 terrace and vehicle parking area. The development has modern designs and quality finishes and materials, most all apartments will have sea views, all apartments come with a large front terrace facing the community areas. The communal areas include; two swimming pools for adults, children's pool, children's area, gym, sports area and spa, and bicycle parking. Located only 700 meters to La Mata Beach, a short 10 minute walk and In front of Torremarina Shopping Center with Mercadona, restaurants, cafes and other shops Torreveija is a Spanish town in the province of Alicante, on the Costa

Blanca. It is known for its typically Mediterranean climate and coastline. It has boardwalks with resorts along its sandy beaches. The small Museum of the Sea and Salt houses exhibitions on the fishing and salt history of the city. In the interior, the Lagunas de La Mata-Torre Vieja Natural Park has trails and two salty lagoons, one pink and the other green. Alicante airport located 40 minutes away and Murcia airport about 1 hour away.



STYLE	VIEWS	AIRCONDITIONING	DISTANCE TO :
<ul style="list-style-type: none"> Modern Contemporary 	<ul style="list-style-type: none"> Panoramic views Sea views 	<ul style="list-style-type: none"> Central airconditioning 	Beach : 1 Km Airport: 40 Km
FURNITURE	PARKING	MAIN LIVING AREA	FLOORING
<ul style="list-style-type: none"> Not furnished 	Parking no Cars: 1	<ul style="list-style-type: none"> Gym 	<ul style="list-style-type: none"> Tile floors Stone floors
KITCHEN	GARDEN AND TERRACES	EXTRA	ENERGETIC CERTIFIED
<ul style="list-style-type: none"> Open kitchen 	<ul style="list-style-type: none"> Covered terrace Play Ground Fenced 	<ul style="list-style-type: none"> Built in wardrobes Alarm Reinforced door Double glazed windows Lift 	

"OUR EXPERIENCE IS YOUR GUARANTEE"