



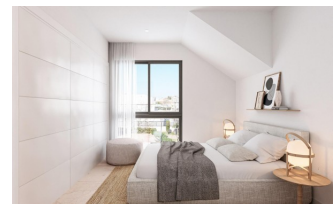
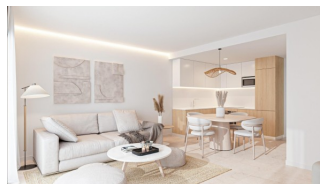
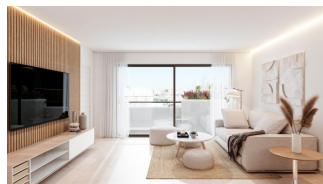
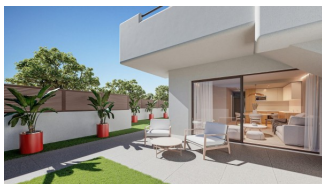
REF: # 11964

COSTA MURCIA (SAN PEDRO DEL PINATAR)



#### INFO

PRICE:	244.900 €
PROPERTY TYPE:	Apartment
CITY:	Costa Murcia (San Pedro del Pinatar)
BEDROOMS:	2
Bathrooms:	2
Build ( m2 ):	73
Plot ( m2 ):	-
Terrace ( m2 ):	32
Year:	-
Floor:	-
Old price	-




#### DESCRIPTION

NEW BUILD APARTMENTS IN SAN PEDRO DEL PINATAR - with communal pool and garden. This 73m2 New Build Ground floor apartment consists of 1 bedrooms, 2 bathrooms, open plan kitchen / dining area / Lounge area, 32m2 terrace and parking included. This lovely residential complex of apartments in San Pedro Del Pinatar has communal gardens and swimming pool, this privileged location on the Mar Menor and Mediterranean coastline attracts those with an interest in sailing and watersports, providing marina mooring and sailing clubs, while the beaches and natural mud baths attract those seeking safe sun, sea and sand. San Pedro del Pinatar has an established community and offers an excellent range of activities, including covered swimming pool and sports facilities, as well as a year round programme of social activities by the pleasant winter weather. The benefits of the mud baths, typical of the region, or the calm waters of the Mar Menor, have favoured the growth of Lo Pagán, which currently has all kind of amenities. In

addition, it has an excellent location, just 5 minutes from the Commercial Centre Dos Mares. Murcia/Corvera airport is 30 minutes away and Alicante airport is an hour drive away.



<b>STYLE</b> <ul style="list-style-type: none"> <li>• Modern</li> <li>• Contemporary</li> </ul>	<b>VIEWS</b> <ul style="list-style-type: none"> <li>• Panoramic views</li> </ul>	<b>DISTANCE TO :</b> <div>Beach : 1 Km</div> <div>Airport: 40 Km</div> <div>Town center : 2 Km</div>	<b>FURNITURE</b> <ul style="list-style-type: none"> <li>• Not furnished</li> </ul>
<b>PARKING</b> <div>Parking no Cars: 1</div>	<b>FLOORING</b> <ul style="list-style-type: none"> <li>• Tile floors</li> <li>• Stone floors</li> </ul>	<b>KITCHEN</b> <ul style="list-style-type: none"> <li>• Open kitchen</li> </ul>	<b>GARDEN AND TERRACES</b> <ul style="list-style-type: none"> <li>• Landscaped</li> <li>• Communal Garden</li> </ul>
<b>EXTRA</b> <ul style="list-style-type: none"> <li>• Built in wardrobes</li> <li>• Alarm</li> <li>• Reinforced door</li> <li>• Double glazed windows</li> </ul>	<b>ENERGETIC CERTIFIED</b> 		

*"OUR EXPERIENCE IS YOUR GUARANTEE"*