



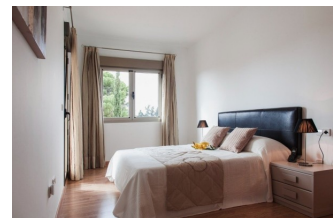
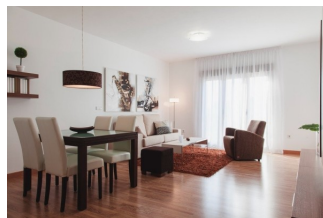
REF: # 10743

COSTA MURCIA (SAN PEDRO DEL PINATAR)



#### INFO

PRICE:	99.000 €
PROPERTY TYPE:	Apartment
CITY:	Costa Murcia (San Pedro del Pinatar)
BEDROOMS:	2
Bathrooms:	2
Build ( m2 ):	97
Plot ( m2 ):	-
Terrace ( m2 ):	-
Year:	-
Floor:	-
Old price	-




#### DESCRIPTION

FANTASTIC APARTMENT IN THE CENTRE OF SAN PEDRO DEL PINATAR - less than 1km from the beach! This 97m2 apartment in an exclusive residential complex, which is superbly located just 10 minutes from the beach, the Town Hall and on the road that leads to the famous Lo Pagan curve. The property consists of 2 bedrooms, 2 bathrooms and an open plan kitchen / dining area. San Pedro del Pinatar is a municipality on the coast of Murcia which is situated on the Mar Menor and is connected to the whole country via the AP-7 motorway and to the main European capitals via Alicante airport, 45 minutes away. San Pedro del Pinatar has everything to live at ease: the calm of the port and the sea, the healthy embrace of La Laguna, the proximity to all services and the joy of the curve of Lo Pagán. Only a 30 minute drive from Murcia (Covera) Airport.

#### ENERGETIC CERTIFIED



STYLE	VIEWS	AIRCONDITIONING	DISTANCE TO :
<ul style="list-style-type: none"> <li>Modern</li> </ul>	<ul style="list-style-type: none"> <li>Panoramic views</li> </ul>	<ul style="list-style-type: none"> <li>Central airconditioning</li> </ul>	Beach : 1 Km Airport: 40 Km
FURNITURE	FLOORING	KITCHEN	GARDEN AND TERRACES
<ul style="list-style-type: none"> <li>Not furnished</li> </ul>	<ul style="list-style-type: none"> <li>Tile floors</li> </ul>	<ul style="list-style-type: none"> <li>Open kitchen</li> </ul>	<ul style="list-style-type: none"> <li>Open terrace</li> </ul>
HEATING	EXTRA	ENERGETIC CERTIFIED	
<ul style="list-style-type: none"> <li>Central gas heating</li> </ul>	<ul style="list-style-type: none"> <li>Reinforced door</li> <li>Double glazed windows</li> </ul>	 <p>The image shows a vertical energy efficiency scale with seven horizontal bars labeled A through G. The bars are colored in a gradient from dark green at the top to red at the bottom. A green vertical bar on the right side of the scale is labeled 'IN PROGRESS' vertically.</p>	

**"OUR EXPERIENCE IS YOUR GUARANTEE"**