



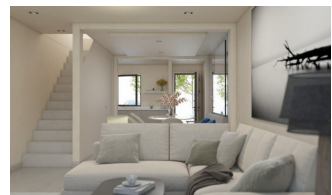
REF: # 10457

ORIHUELA COSTA



#### INFO

|                 |                |
|-----------------|----------------|
| PRICE:          | 229.500 €      |
| PROPERTY TYPE:  | Townhouse      |
| CITY:           | Orihuela Costa |
| BEDROOMS:       | 2              |
| Bathrooms:      | 2              |
| Build ( m2 ):   | 90             |
| Plot ( m2 ):    | 49             |
| Terrace ( m2 ): | -              |
| Year:           | -              |
| Floor:          | -              |
| Old price       | -              |



#### DESCRIPTION

BEAUTIFUL NEW BUILD TOWNHOUSES IN PILAR DE LA HORADADA New Build residential offers you 26 townhouses with 2 and 3 bedrooms in Pilar de la Horadada close to all amenities. Townhouses designed to make your dreams come true. Exclusive homes with large terraces and gardens. An options for a private pool at an extra cost. Excellent location, 5 minutes from the sandy beaches and most prestigious 18-hole Lo Romero golf course. Pilar de la Horadada is a typical Spanish village in the most southern part of the Costa Blanca. The large main street has supermarkets, lots of shops, restaurants and bars and some lovely squares. The beautiful beaches of Torre de la Horadada and Mil Palmeras with fine sand promenade is just 5 minutes away. The airports of Corvera (Murcia) and Alicante are respectively 40 and 55 minutes away.

#### ENERGETIC CERTIFIED



|   |   |   |   |
|---|---|---|---|
| <b>STYLE</b> <ul style="list-style-type: none"> <li>Modern</li> <li>Contemporary</li> </ul>   | <b>VIEWS</b> <ul style="list-style-type: none"> <li>Panoramic views</li> </ul>  | <b>AIRCONDITIONING</b> <ul style="list-style-type: none"> <li>Central airconditioning</li> </ul>  | <b>DISTANCE TO :</b> <div> Beach : 4 Km </div> <div> Airport: 50 Km </div>    |
| <b>ORIENTATION</b> <div> South west </div>  | <b>PARKING</b> <div> Parking no Cars: 1 </div>  | <b>MAIN LIVING AREA</b> <ul style="list-style-type: none"> <li>Storage</li> <li>Bathroom en-suite</li> </ul>  | <b>FLOORING</b> <ul style="list-style-type: none"> <li>Tile floors</li> </ul> |
| <b>KITCHEN</b> <ul style="list-style-type: none"> <li>Open kitchen</li> <li>Equipped kitchen</li> <li>Granite countertop</li> </ul> | <b>GARDEN AND TERRACES</b> <ul style="list-style-type: none"> <li>Open terrace</li> <li>Automatic watering system</li> <li>Fenced</li> <li>Stone walls</li> <li>Private garden</li> </ul> | <b>EXTRA</b> <ul style="list-style-type: none"> <li>Built in wardrobes</li> <li>Reinforced door</li> <li>Double glazed windows</li> <li>Storage room</li> </ul> | <b>ENERGETIC CERTIFIED</b> <div> </div>                                       |

**"OUR EXPERIENCE IS YOUR GUARANTEE"**