



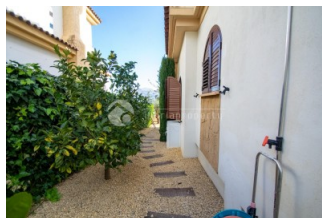
REF: # 10448

LA NUCIA/POLOP (POLOP)



INFO

PRICE:	284.000 €
PROPERTY TYPE:	Villa
CITY:	La Nucia/Polop (Polop)
BEDROOMS:	3
Bathrooms:	3
Build (m2):	180
Plot (m2):	-
Terrace (m2):	30 + 15 + 15 + 40
Year:	-
Floor:	3
Old price	-




DESCRIPTION

Villa with fantastic views over the vally and the medeteranian sea. Plenty of outdoor space with terraces on 2 sides of the house and a solarium on the roof. Also big communal areas with pool. 1. Floor; livingroom, kitchen, laundry, bedroom, bathroom and both open and covered terraces. 2 .Floor; 2 bedrooms with small balcony and 2 bathrooms on suit Basement 70 m2 with concrete floor and walls, has windows, power, water ready to make one apartment, games room, bodega etc Aircondition /heatpump in all rooms. Gas fireplace in livingroom Very weel maintained. Private parking inside the plot. The house is located in Polop not far from Puig Campana mountain,1362 m high fantastic for haiking/cycling. Easy access to Asía Garden Hotel, 3 golf courses, Villa Aitana Hotel, Terra Mitica Theme Park and exit of the AP-7 La Marina shopping center. Costa Blanca Due to the proximity to the coast you can enjoy the fabulous beaches of Levante, Poniente, Altea, Albir, the Cala de Finestratand and the Villajoyosa, with more than 10 km in length that

are among the best in Europe awarded the European Union blue flag awarded by the quality of its waters, by cleaning and services offered.



STYLE	VIEWS	AIRCONDITIONING	DISTANCE TO :
<ul style="list-style-type: none"> Contemporary 	<ul style="list-style-type: none"> Panoramic views Sea views Mountain views 	<ul style="list-style-type: none"> Livingroom Bedrooms 	Beach : +10 Km Airport: 70 Km Town center : 2 Km
ORIENTATION	FURNITURE	PARKING	TAX
South east	<ul style="list-style-type: none"> Not furnished 	Parking no Cars: 1	Community : 800 € I.B.I : 511 €
MAIN LIVING AREA	FLOORING	KITCHEN	GARDEN AND TERRACES
<ul style="list-style-type: none"> Bathroom en-suite 	<ul style="list-style-type: none"> Tile floors 	<ul style="list-style-type: none"> Closed kitchen Equipped kitchen Granite countertop 	<ul style="list-style-type: none"> Covered terrace Open terrace Fruit trees Palm trees Landscaped Fenced BBQ/grill Private garden Communal Garden
HEATING	EXTRA	ENERGETIC CERTIFIED	
<ul style="list-style-type: none"> Fireplace gas 	<ul style="list-style-type: none"> Built in wardrobes Alarm Reinforced door Double glazed windows Door bell with camera Satellite TV Storage room Laundry room Internet Concierge 	 <p>The image shows a vertical energy efficiency scale with seven horizontal bars labeled A through G. The bars are colored in a gradient from green at the top (A) to red at the bottom (G). A green vertical bar on the right side of the scale is labeled 'IN PROGRESS'.</p>	

"OUR EXPERIENCE IS YOUR GUARANTEE"