



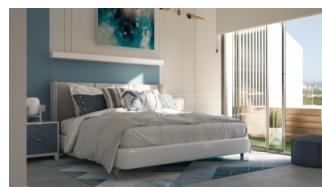
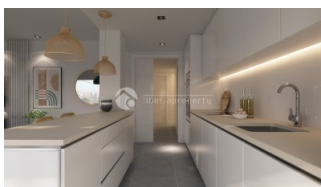
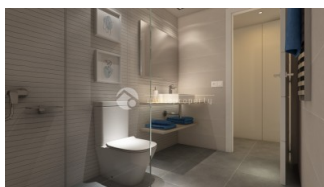
REF: # 9863

FINESTRAT



INFO

PRICE:	295.000 €
PROPERTY TYPE:	Apartment
CITY:	Finestrat
BEDROOMS:	2
Bathrooms:	2
Build (m2):	72
Plot (m2):	-
Terrace (m2):	66
Year:	-
Floor:	-
Old price	-



DESCRIPTION

This new project contains 70 apartments all with large private terraces and with 2 or 3 bedrooms, as well as 2 exclusive villas with private pools. The apartments have exceptional views of the area's greenery, the Benidorm skyline and the Mediterranean Sea in the background. All homes have at least 2 bathrooms. Large windows and glass doors from floor to ceiling, which give the apartments a very light and airy impression. On the terrace there are very high-quality anti-slip tiles. There are aluminium electric blinds on all windows and glass doors. The kitchen is fully equipped with a hob, oven, extractor fan, fridge, washing machine and dishwasher. There is also the option of customizing the kitchen according to your own preferences. Fully furnished bathroom with shower walls. There are built-in wardrobes in all bedrooms. Built-in LED light in the kitchen and bathroom. LED strip in hall and bedroom. Video intercom connected to the entrance to the project. Outlets for TV and radio in all rooms except the bathroom. There is also a TV outlet on the terrace. Heat pump/air conditioning located in hidden ducts in the ceiling. Ventilation system for better hygiene and to avoid moisture in the apartment. The penthouse apartments have pre-installed electricity and water for connecting the Jacuzzi. Garage in the basement with an

attached storage room. There are also facilities for bicycles in the basements. Pre-installed for charging options for both cars and bicycles. The common area is inside a closed area. The complex is equipped with both an indoor and outdoor swimming pool area, suitable for adults and children, and with a hot tub area, communal toilets. Play area, a children's playground, an area with pergolas and a gym. In addition, the resort is equipped with a fitness room. An intelligent letterbox area has been set up with multi-purpose electronic locks in the common space of the project, so that residents' correspondence and parcels can be centralised, and products and services can be safely received at their home at any time of the day, even when they are not physically there present. Large lift in all apartment blocks that goes from the garage in the basement up to the top floor. Perfect for those with reduced mobility/impaired movement.



STYLE	VIEWS	AIRCONDITIONING	DISTANCE TO :
<ul style="list-style-type: none"> Modern 	<ul style="list-style-type: none"> Panoramic views Sea views Mountain views 	<ul style="list-style-type: none"> Central airconditioning 	Beach : 2 Km Airport: 50 Km Town center : 2 Km
ORIENTATION	FURNITURE	PARKING	MAIN LIVING AREA
South	<ul style="list-style-type: none"> Not furnished 	Garage no Cars : 1 Parking no Cars: 1	<ul style="list-style-type: none"> Bathroom en-suite
FLOORING	KITCHEN	GARDEN AND TERRACES	HEATING
<ul style="list-style-type: none"> Tile floors 	<ul style="list-style-type: none"> Open kitchen Equipped kitchen 	<ul style="list-style-type: none"> Covered terrace Open terrace Exterior lights Automatic watering system Palm trees Play Ground Landscaped Fenced Stone walls Electric gate Padle tennis Communal Garden 	<ul style="list-style-type: none"> Floor heating bathrooms
EXTRA			
<ul style="list-style-type: none"> Built in wardrobes Alarm Reinforced door Double glazed windows Door bell with camera Satellite TV Security guard Video security Storage room Laundry room Internet 			

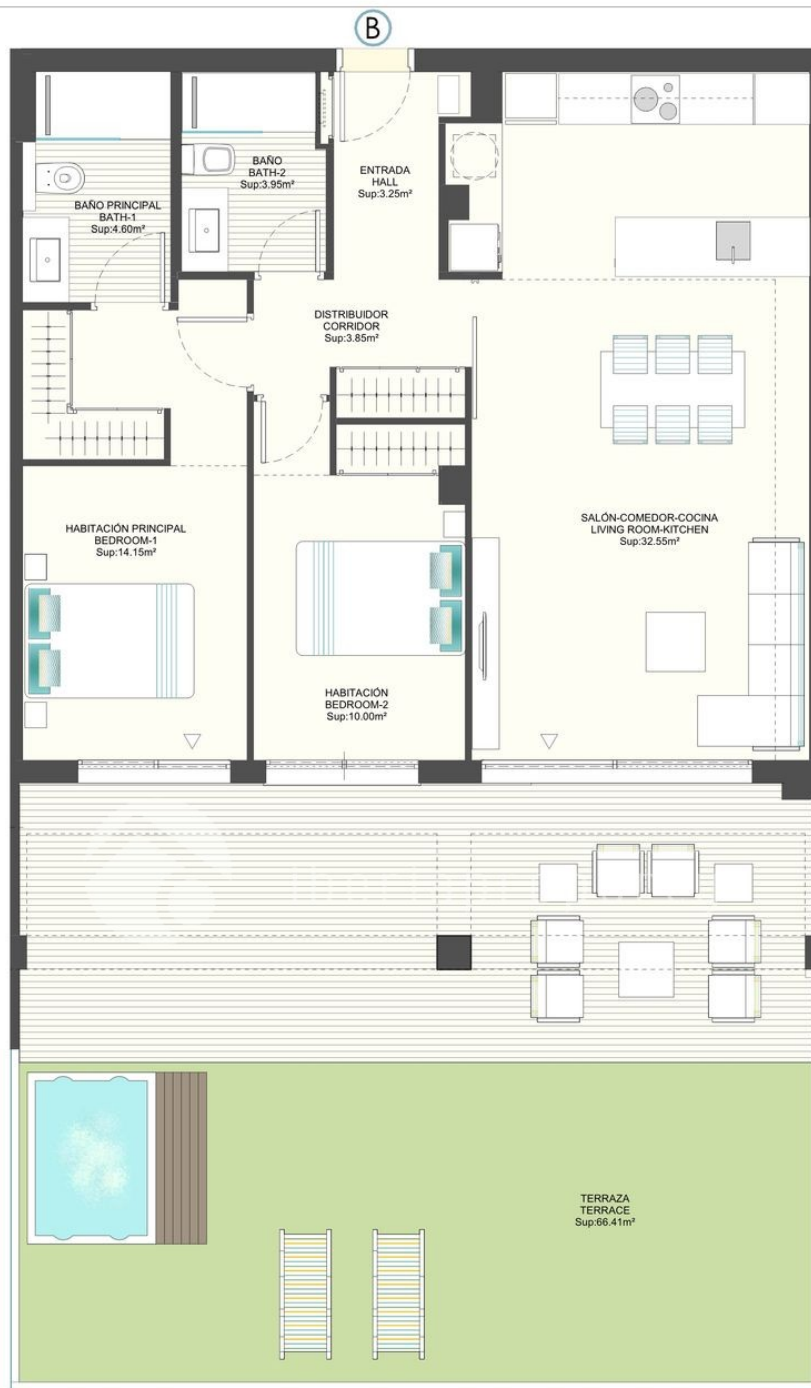
PROPERTY GALLERY











Bloque
3

Planta
1

Vivienda
B



TOTAL SUP. ÚTIL / LIVING AREA:

Sup.útil vivienda / Property:

Sup.útil terrazas y patios cubiertos / terrace_covered:

Sup.útil terrazas y patios descubiertos / terrace_uncovered:

TOTAL SUP. CONSTRUIDA C.T / BUILD AREA 1.i :

138.76 m².

72.35 m².

5.56 m².

60.85 m².

165.26 m².



PLANOS COMERCIALES: Superficies, medidas, configuración, lindes y demás, son los previstos, sujetos a posibles modificaciones por exigencias técnicas, jurídicas o comerciales. No se incluye en el precio ni bienes muebles, ni elementos de jardinería, Jacuzzi opcional.
COMMERCIAL FLOOR PLANS: Area, measurements, room distribution, boundaries and others may be subject to changes due to technical, legal or commercial reason. Furniture and gardening elements are not included. Jacuzzi optional.

"OUR EXPERIENCE IS YOUR GUARANTEE"