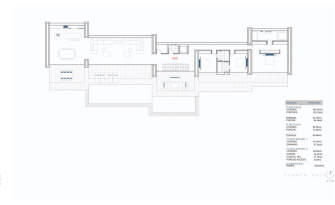




REF: # 9794

CALPE/MORAIRA



INFO

PRICE:	2.350.000 €
PROPERTY TYPE:	Villa
CITY:	Calpe/Moraira
BEDROOMS:	5
Bathrooms:	6
Build (m2):	692
Plot (m2):	1.532
Terrace (m2):	-
Year:	-
Floor:	-
Old price	-

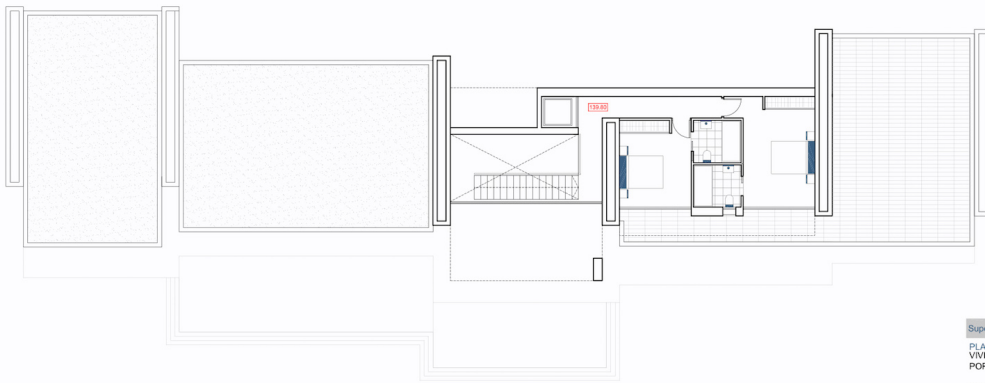
DESCRIPTION

Luxury villa for sale in Benimeit area in Moraira. This high quality villa has 4 floors which are connected with an elevator and an internal staircase. The main floor has a spacious openplan livingdining roomkitchen. The kitchen is fully equipped and has an island for cooking. Sliding doors at ceiling height give direct access to several terraces. In addition there are 3 double bedrooms, all with their own bathroom and a guest toilet. One level up there are 2 more double bedrooms. Each with an ensuite bathroom. The property has 2 basements. Basement number one houses the gym, an additional bathroom and laundry room. In basement number 2 there is a garage for 2 cars and storage rooms. Air conditioning throughout the house (conduct) and central heating. Automatic entrance door with independent pedestrian entrance and intercom. On the same level as the main house is the swimming pool.

ENERGETIC CERTIFIED

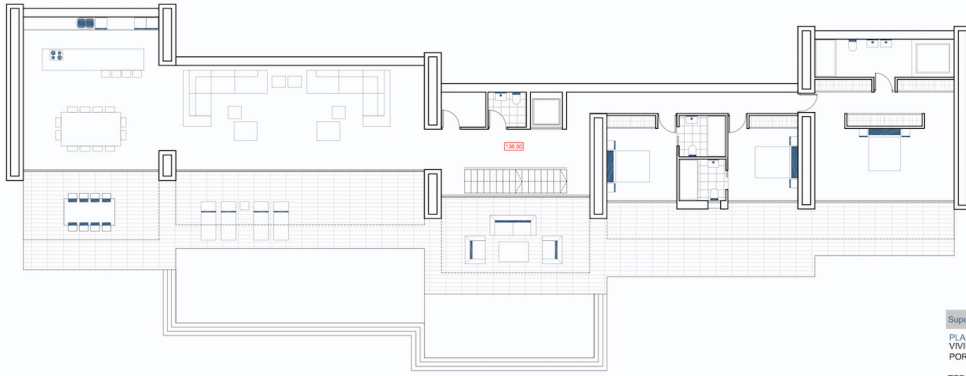






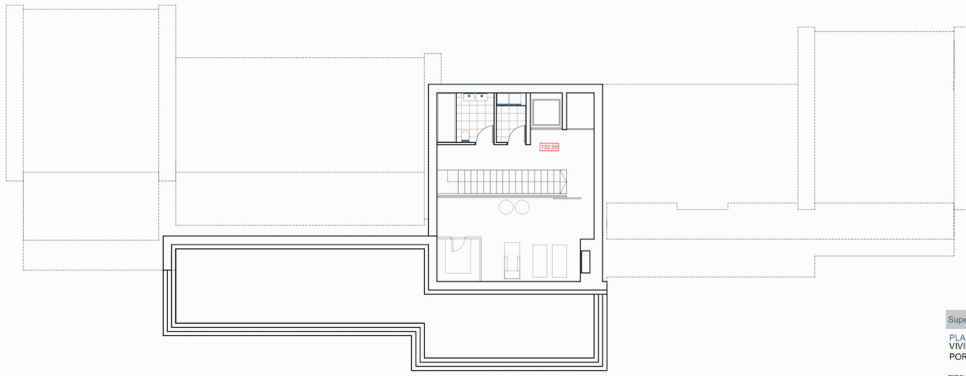
Superficies	Construidas
PLANTA BAJA	
VIVIENDA	283.62m ²
PORCHES	102.33m ²
TERRAZA	60.78m ²
PISCINA	64.96m ²
PLANTA ALTA	
VIVIENDA	90.36m ²
PORCHE	10.80m ²
TERRAZA	69.96m ²
PLANTA SOTANO -1	
VIVIENDA	42.15m ²
GIMNASIO	37.34m ²
PLANTA SOTANO -2	
VIVIENDA	48.60m ²
GARAJE	46.45m ²
CUARTO TEC.	21.76m ²
PORCHE ACCESO	8.35m ²
ACABADOS EXT.	
RAMPA	182.85m ²

PLANTA ALTA (



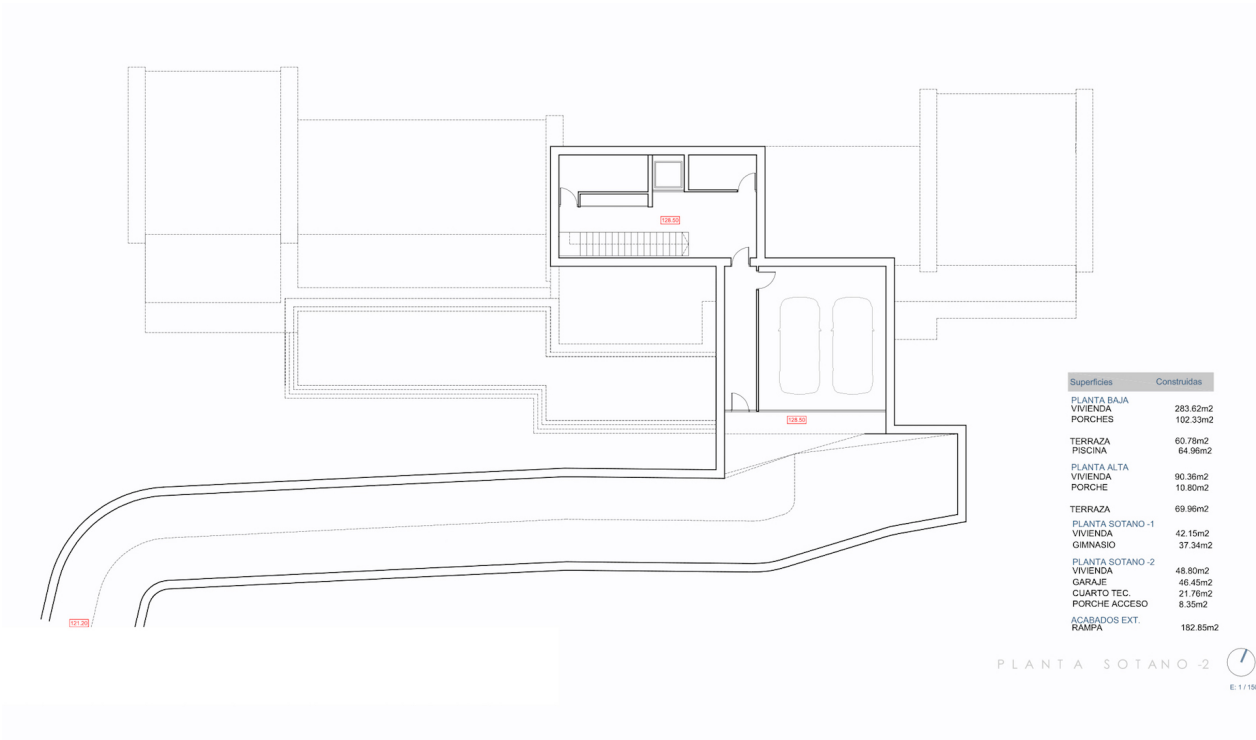
Superficies	Construidas
PLANTA BAJA	
VIVIENDA	283.62m ²
PORCHES	102.33m ²
TERRAZA	60.78m ²
PISCINA	64.96m ²
PLANTA ALTA	
VIVIENDA	90.36m ²
PORCHE	10.80m ²
TERRAZA	69.96m ²
PLANTA SOTANO -1	
VIVIENDA	42.15m ²
GIMNASIO	37.34m ²
PLANTA SOTANO -2	
VIVIENDA	48.80m ²
GARAJE	46.45m ²
CUARTO TEC.	21.76m ²
PORCHE ACCESO	8.35m ²
ACABADOS EXT.	
RANPA	182.85m ²

PLANTA BAJA 
E: 1 / 150



Superficies	Construidas
PLANTA BAJA	
VIVIENDA	283.62m ²
PORCHES	102.33m ²
TERRAZA	60.78m ²
PISCINA	64.96m ²
PLANTA ALTA	
VIVIENDA	90.36m ²
PORCHE	10.80m ²
TERRAZA	69.96m ²
PLANTA SOTANO -1	
VIVIENDA	42.15m ²
GIMNASIO	37.34m ²
PLANTA SOTANO -2	
VIVIENDA	48.80m ²
GARAJE	46.45m ²
CUARTO TEC.	21.76m ²
PORCHE ACCESO	8.35m ²
ACABADOS EXT.	
RANPA	182.85m ²

PLANTA SOTANO -1 
E: 1 / 150



"OUR EXPERIENCE IS YOUR GUARANTEE"